

The Oregon Poverty Measure

New Insights into Poverty and the Safety Net

Leanne Giordono

October 2, 2020

Motivation: What is poverty?

- Insufficient family resources to meet basic needs
- An individual is in poverty when: **Resources < Threshold**
- How we define the **family**, measure **resources** and identify the **threshold**, matters
- Poverty measurement is controversial

Background: Official Poverty Measure (OPM)

Developed by the US Census in 1963

- **Family:** individuals related by birth, marriage, or adoption (traditional)
- **Resources:** pre-tax income (earnings, investments, and cash-based government transfer programs) (not inclusive of all resources)
- **Threshold:** = level of need, food cost * 3 and adjusted for inflation (no other costs included; not adjusted for variation in cost of living)

Motivation: Supplemental Poverty Measure (SPM)

Introduced by the US Census in 2009

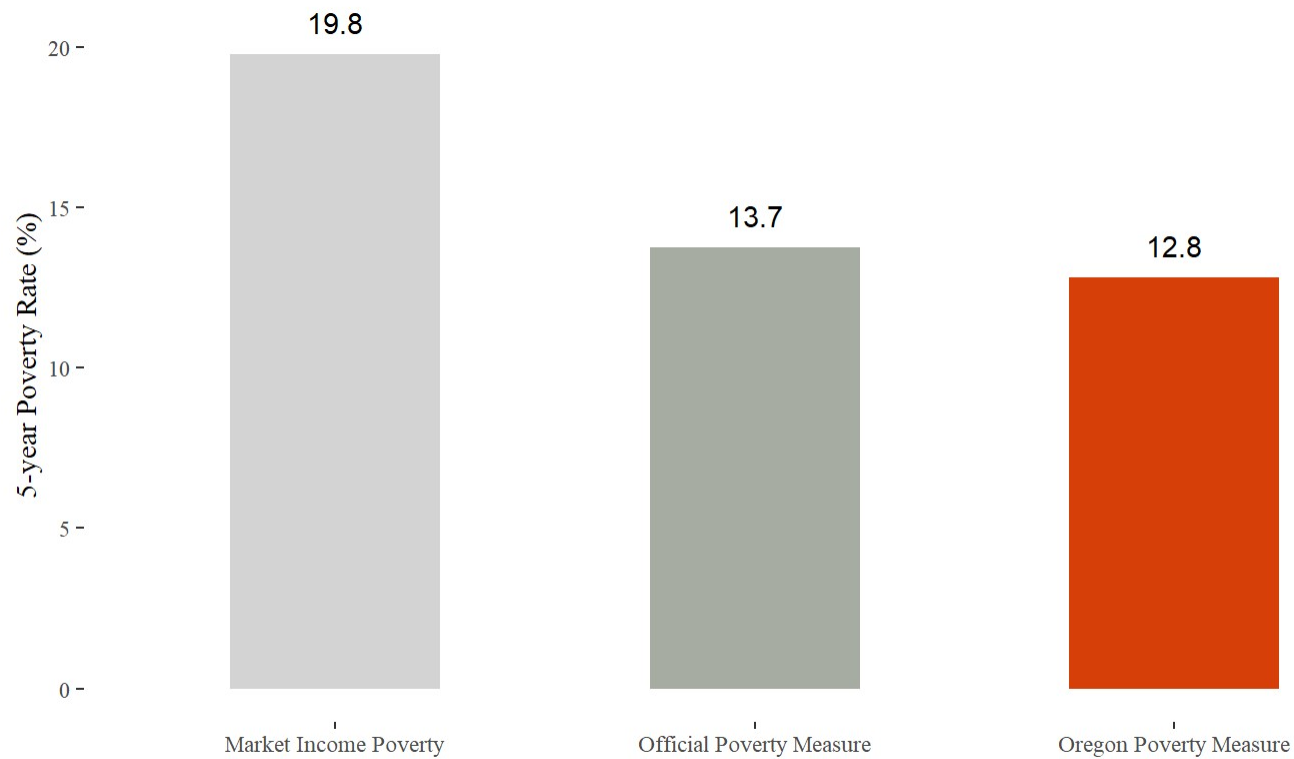
- **Family:** also includes cohabiting partners and foster children
- **Resources:** also includes SNAP, EITC, taxes and other expenses like child care, child support, and Medical Out of Pocket Expenses
- **Thresholds:** based on current consumer spending on food, clothing, shelter, utilities. Adjusted for housing costs.
- BUT empirical problems hinder use of SPM for sub-state demographic and geographic estimates

Motivation: Oregon Poverty Measure Project

- Basic idea : create an SPM-like measure for Oregon
 - Based on American Community Survey - larger sample
 - Incorporate multiple other data sources (e.g., state admin data)
 - Change family unit definitions
 - Incorporate geographic adjustments for housing costs
- Use methods applied in California and Wisconsin
- Findings reflect 5-year period from 2014-18

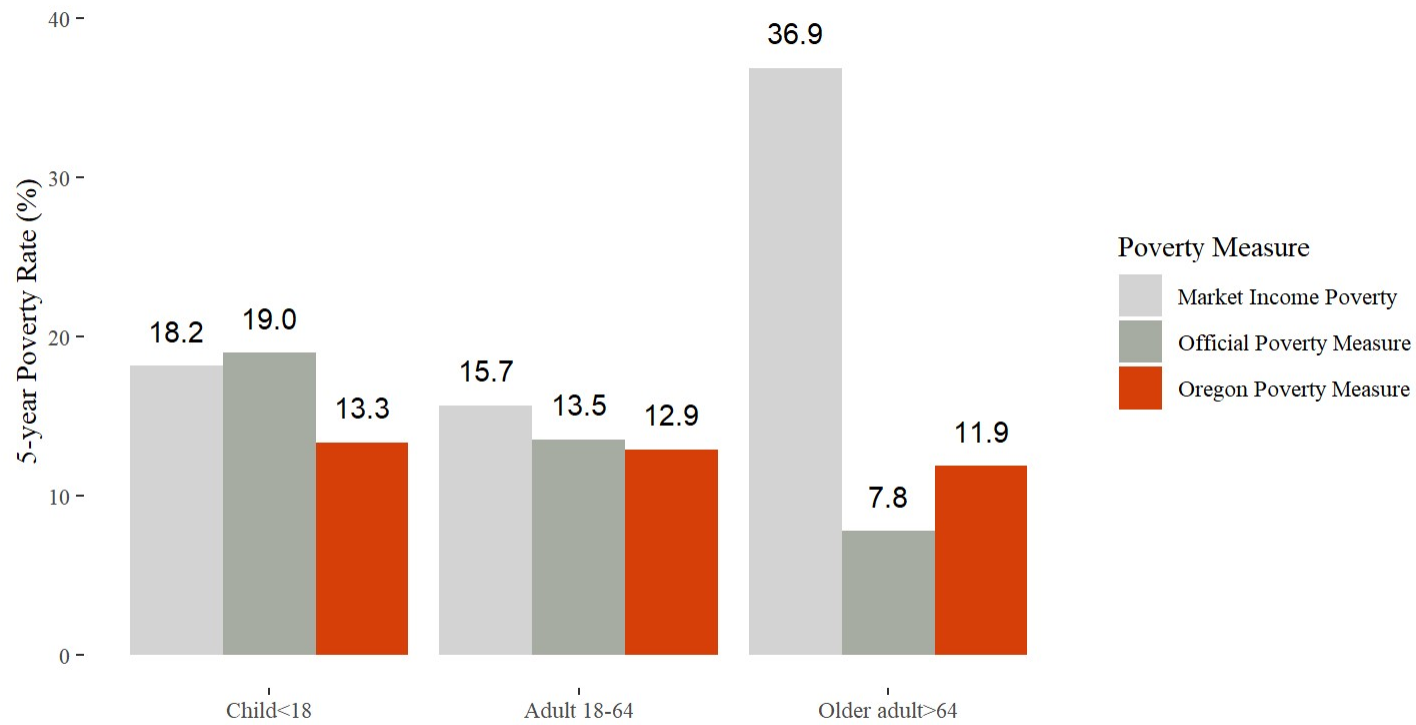


Findings: Overall poverty



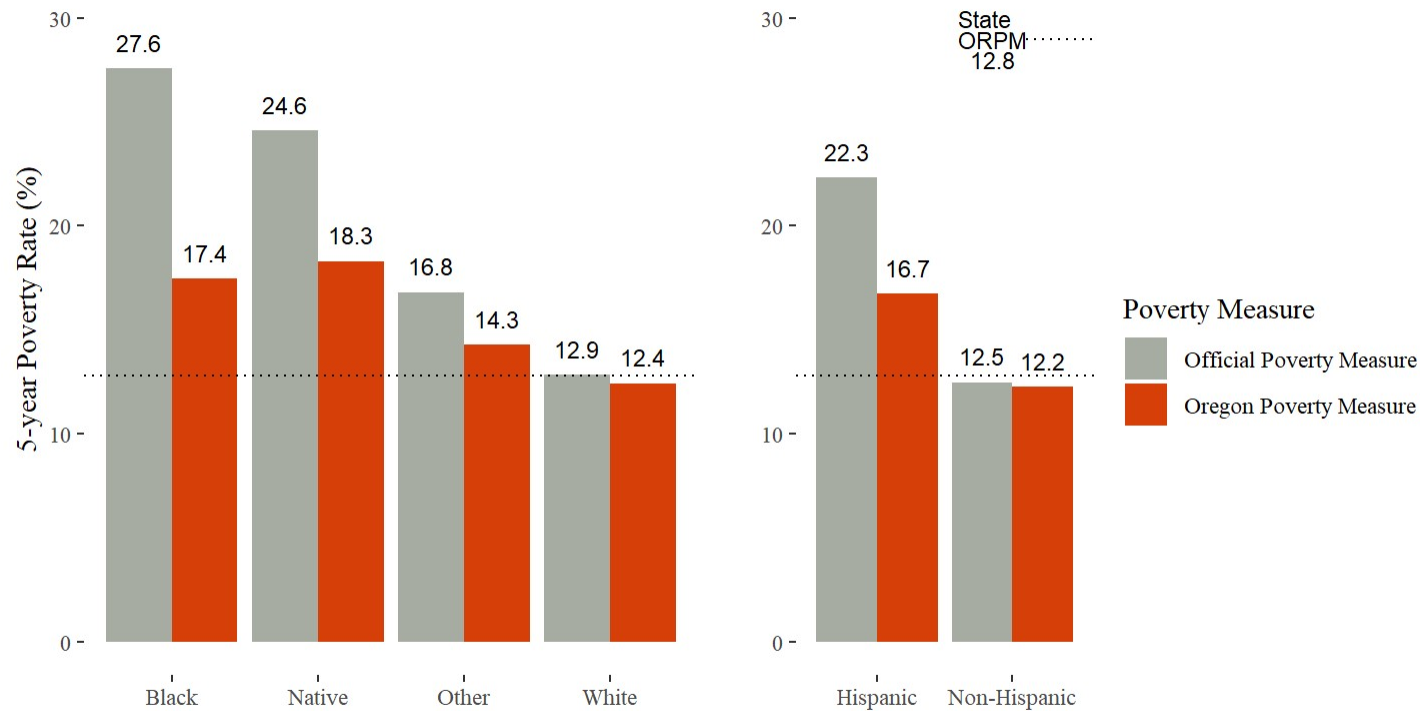
Source: Oregon Poverty Measure Project

Findings: Differences by age



Source: Oregon Poverty Measure Project

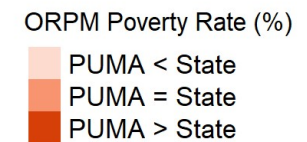
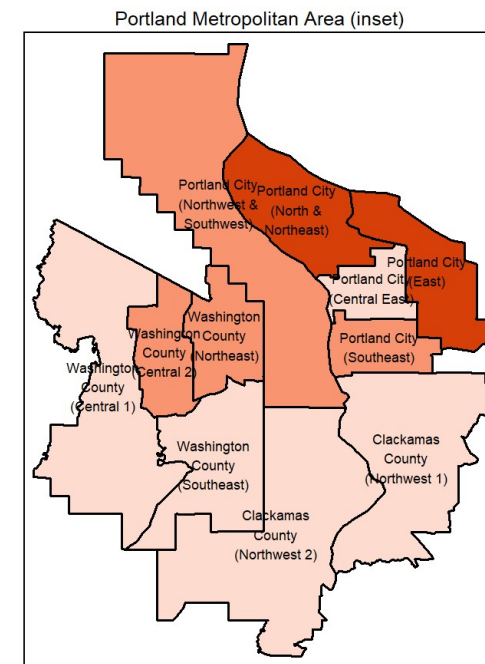
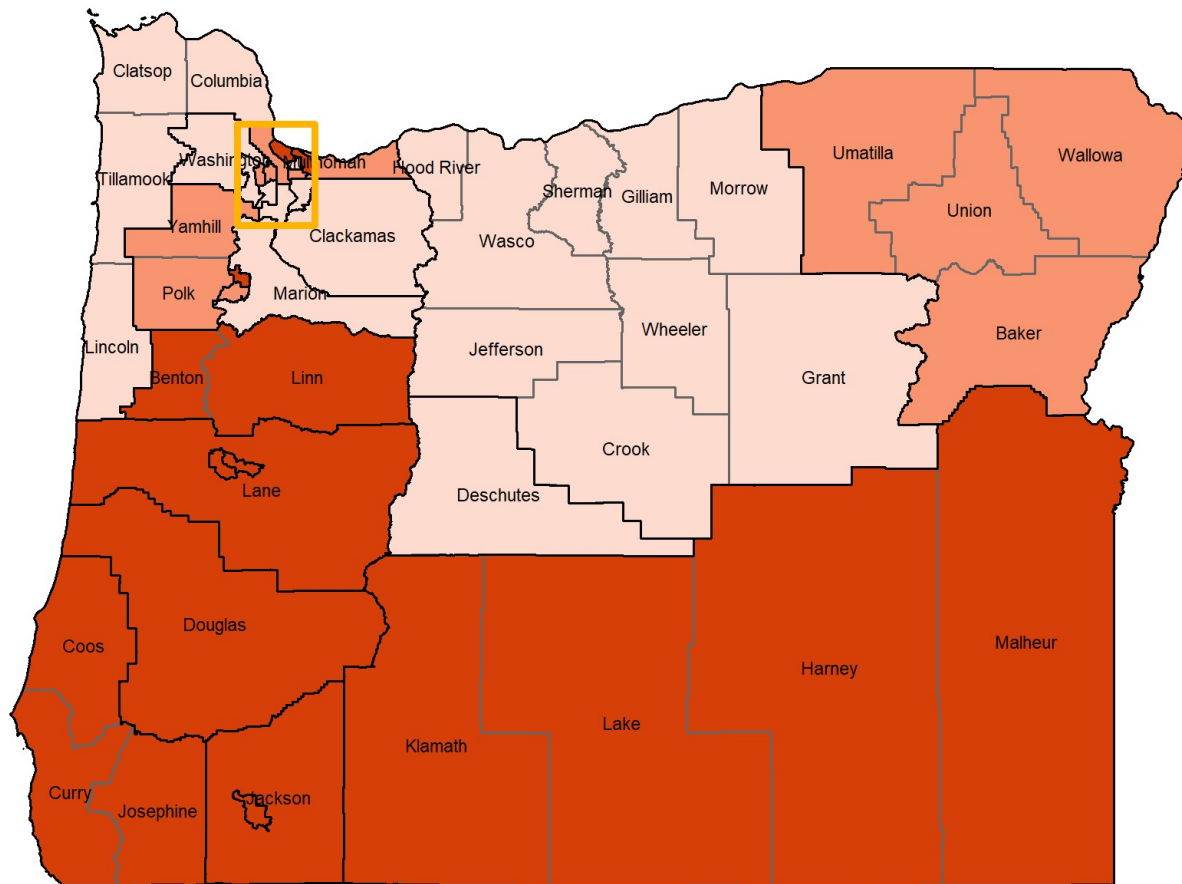
Findings: Differences by race/ethnicity



Source: Oregon Poverty Measure Project

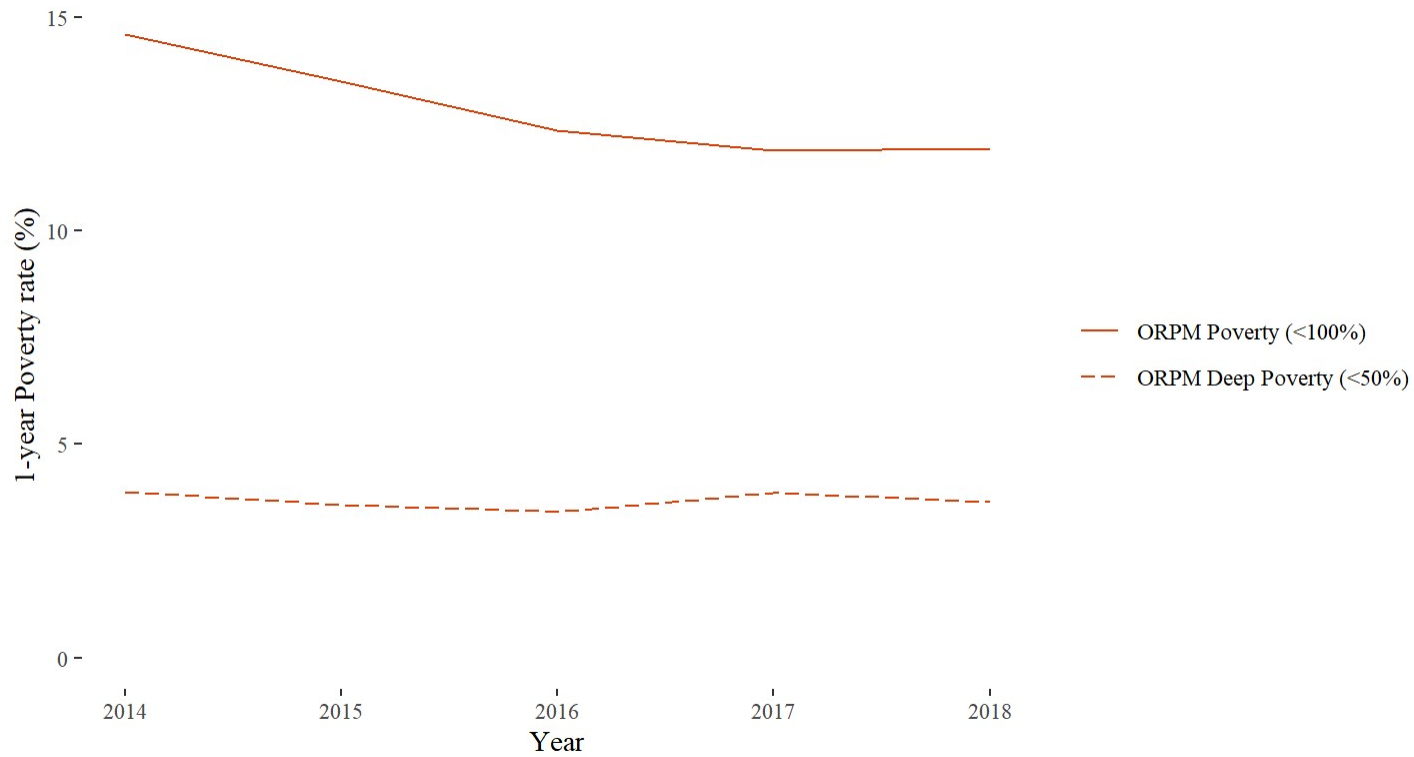
Findings: Geographic variation

5-year ORPM Poverty Rate by PUMA



Source: Oregon Poverty Measure Project

Findings: Poverty and deep poverty over time



Source: Oregon Poverty Measure Project

Report: Poverty and the safety net (2018)



Source: Oregon Poverty Measure Project

Oregon Poverty – Next Steps and Future Directions

- 5-year report to be released next week
- Webinar
- Policy briefs and journal articles:
 - More analysis into inequities - social and demographic
 - Deeper dive into Oregon policies (e.g., minimum wage changes, Oregon Earned Income Credit)
 - COVID and poverty in Oregon
- Continuing dialogue with policymakers

Thank you

Please contact us with feedback and questions:

<https://health.oregonstate.edu/research/group/poverty>

giordonl@oregonstate.edu

david.rothwell@oregonstate.edu

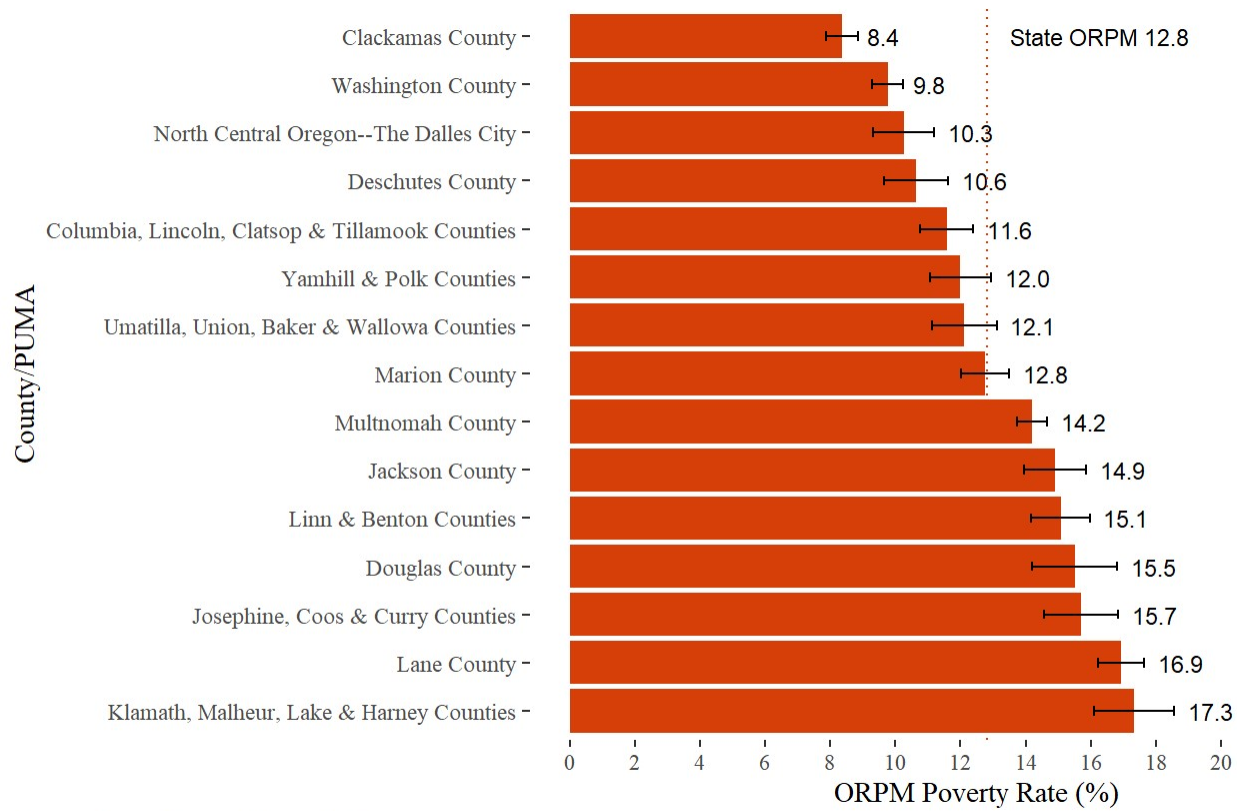
bruce.weber@oregonstate.edu

And for a little fun, check out this related West Wing Video:

<https://www.youtube.com/watch?v=q9EehZlw-zk>

Extras

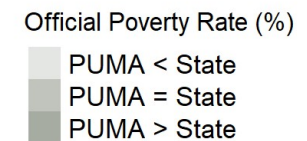
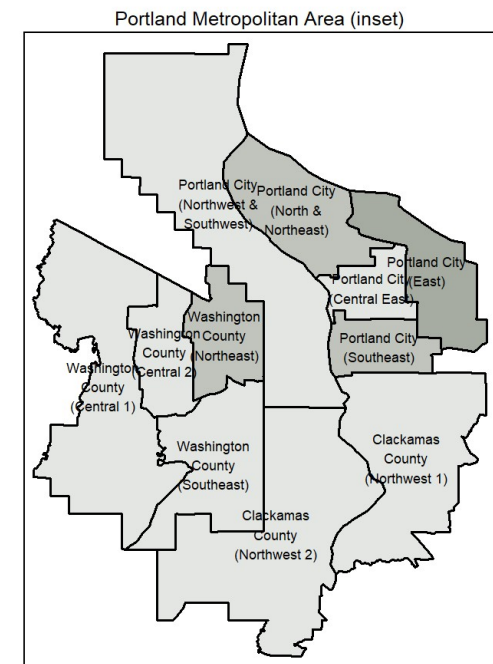
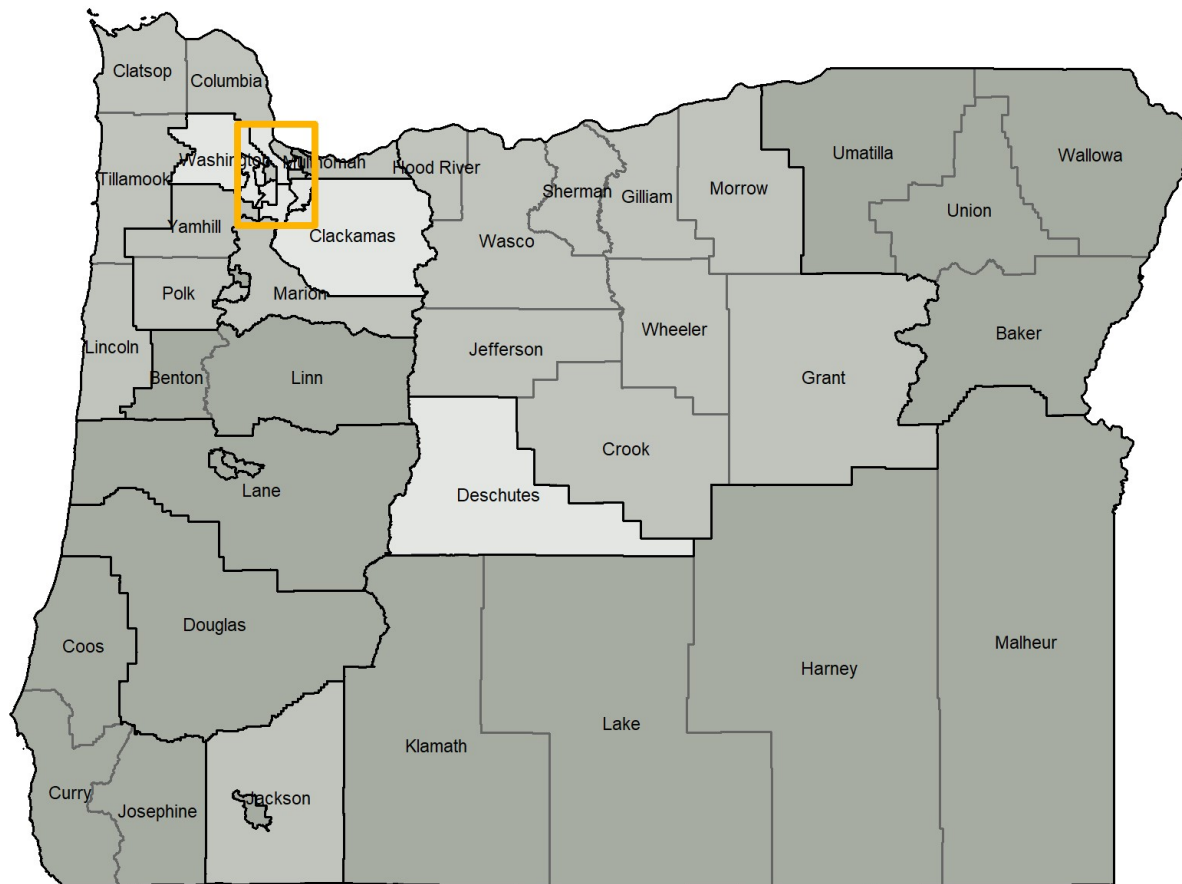
Extras: Poverty by County/PUMA



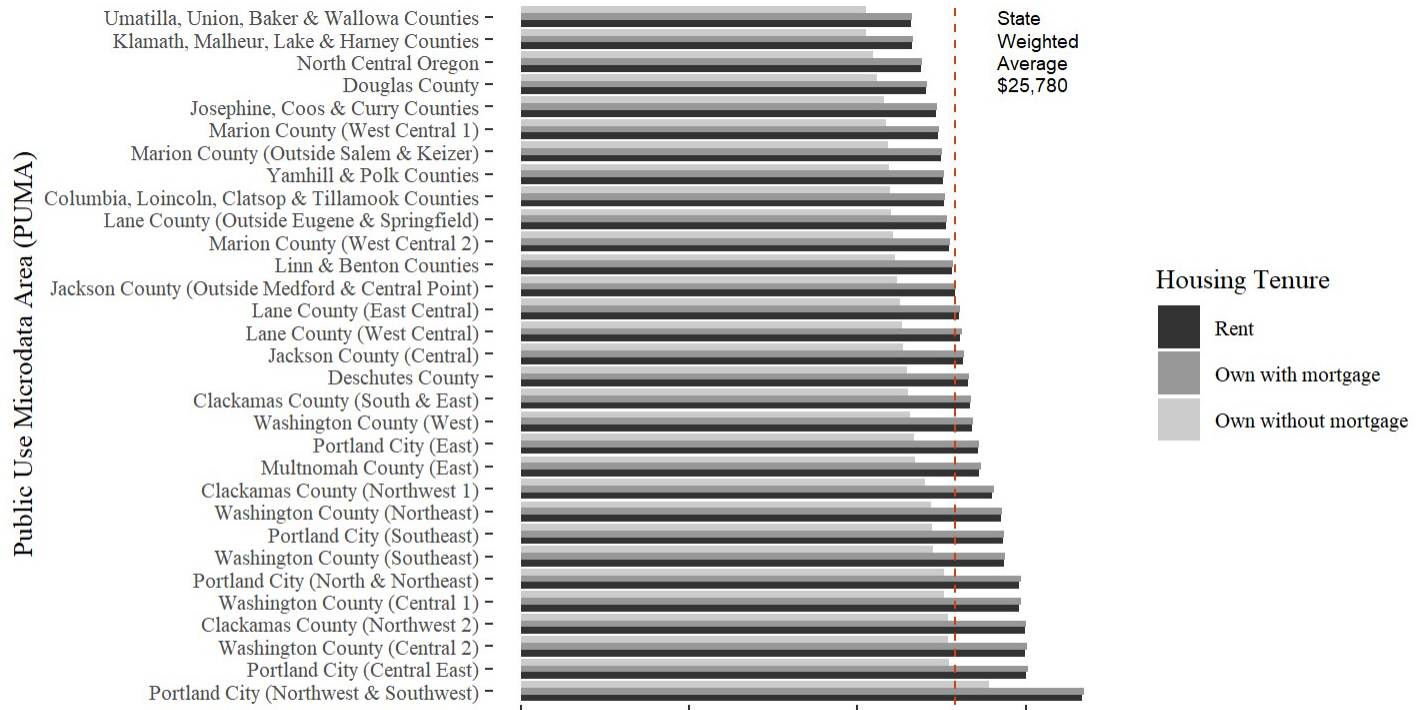
Source: Oregon Poverty Measure Project

Extras: Official Poverty by County/PUMA

5-year Official Poverty Rate by PUMA



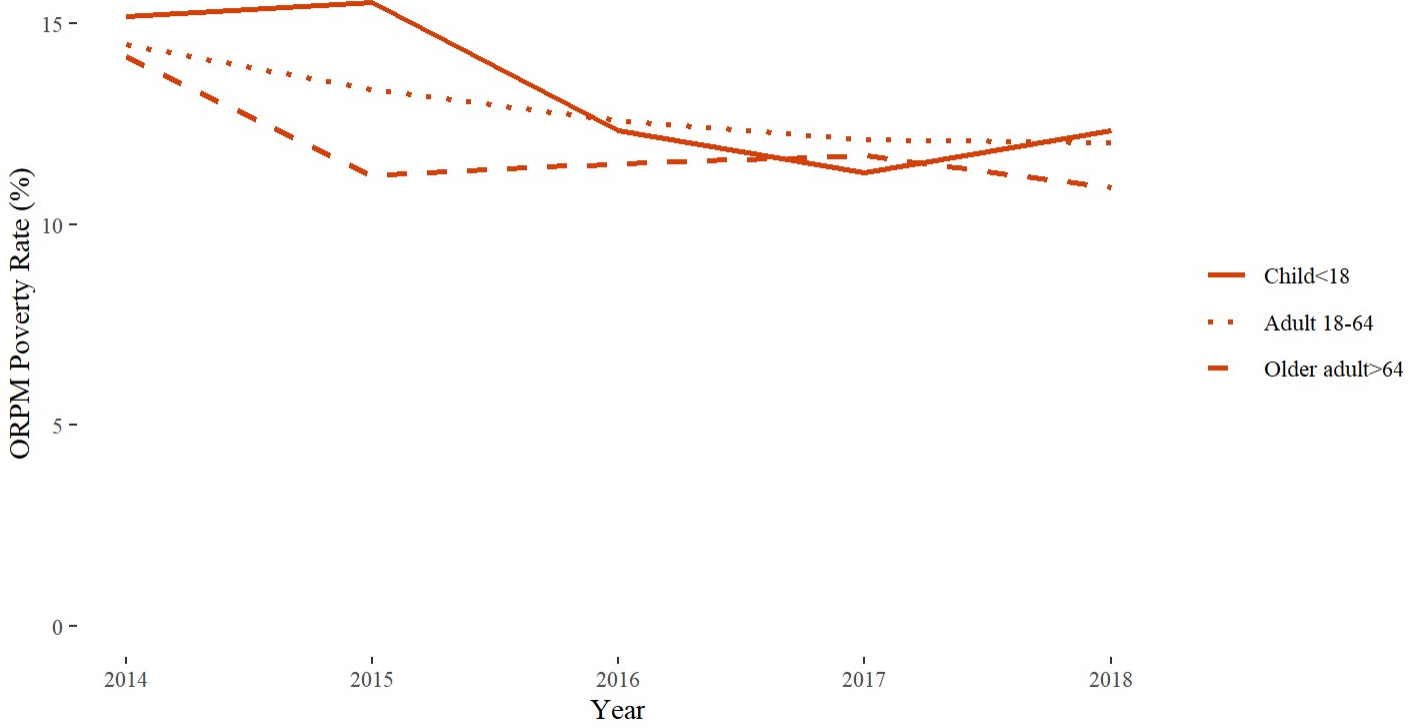
Source: Oregon Poverty Measure Project



Extras: ORPM Poverty Thresholds by County/PUMA

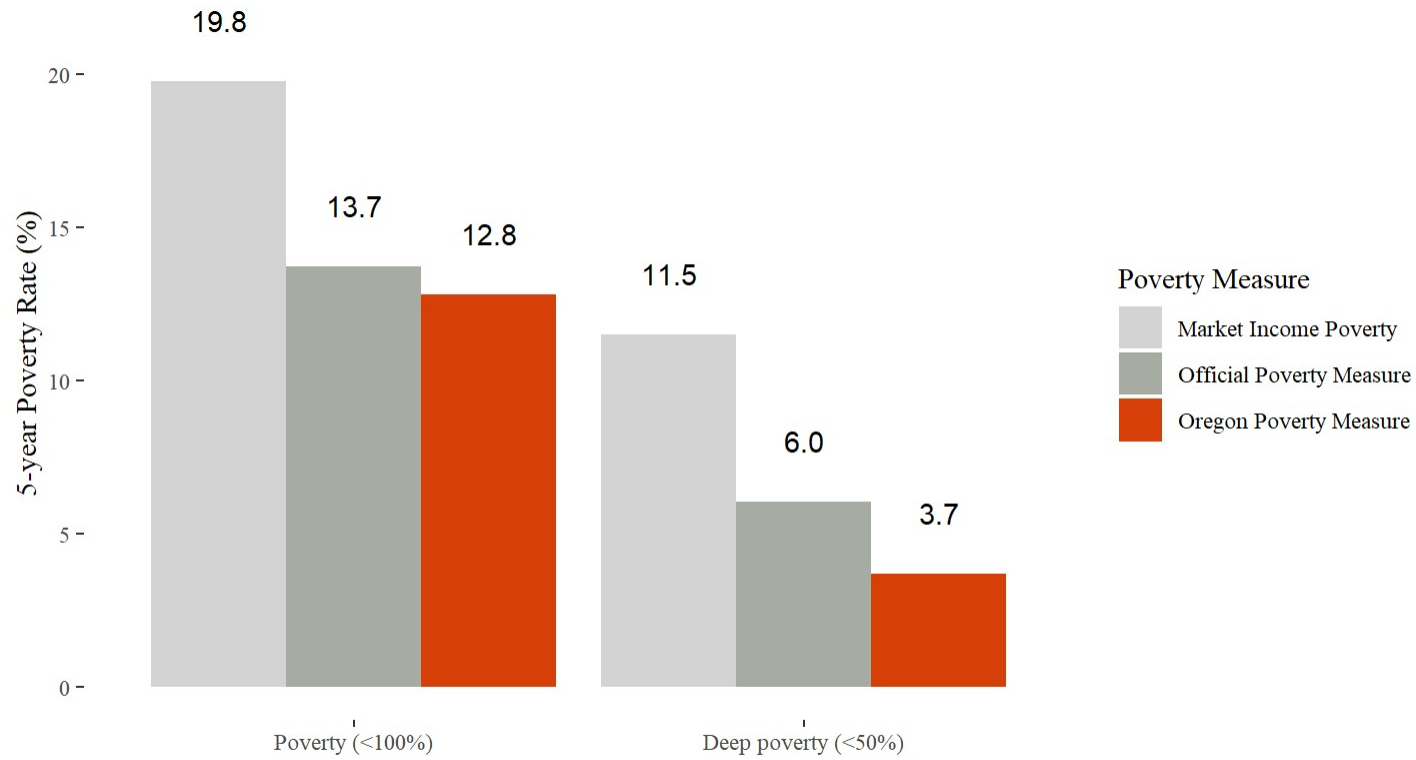
: Oregon Poverty Measure Project

Extras: Poverty over time by age group



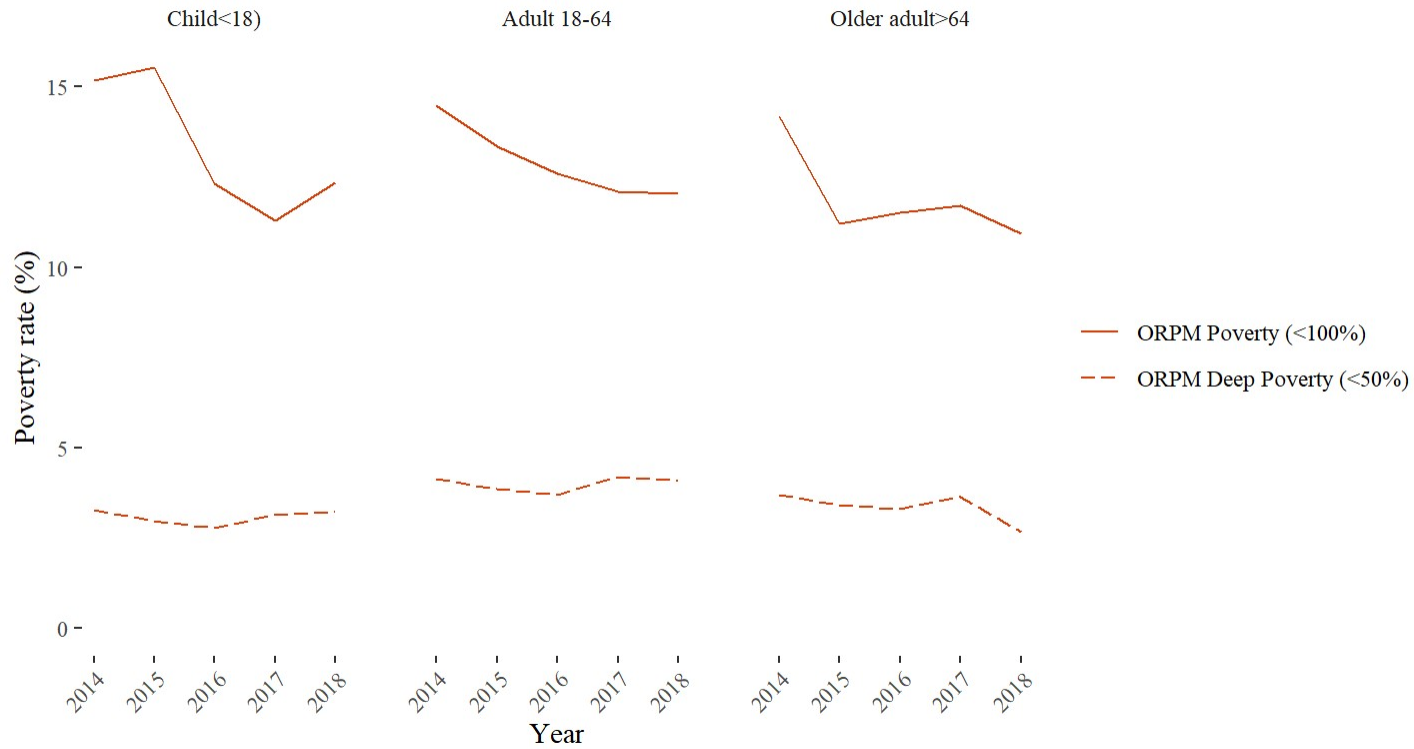
Source: Oregon Poverty Measure Project

Findings: Deep poverty



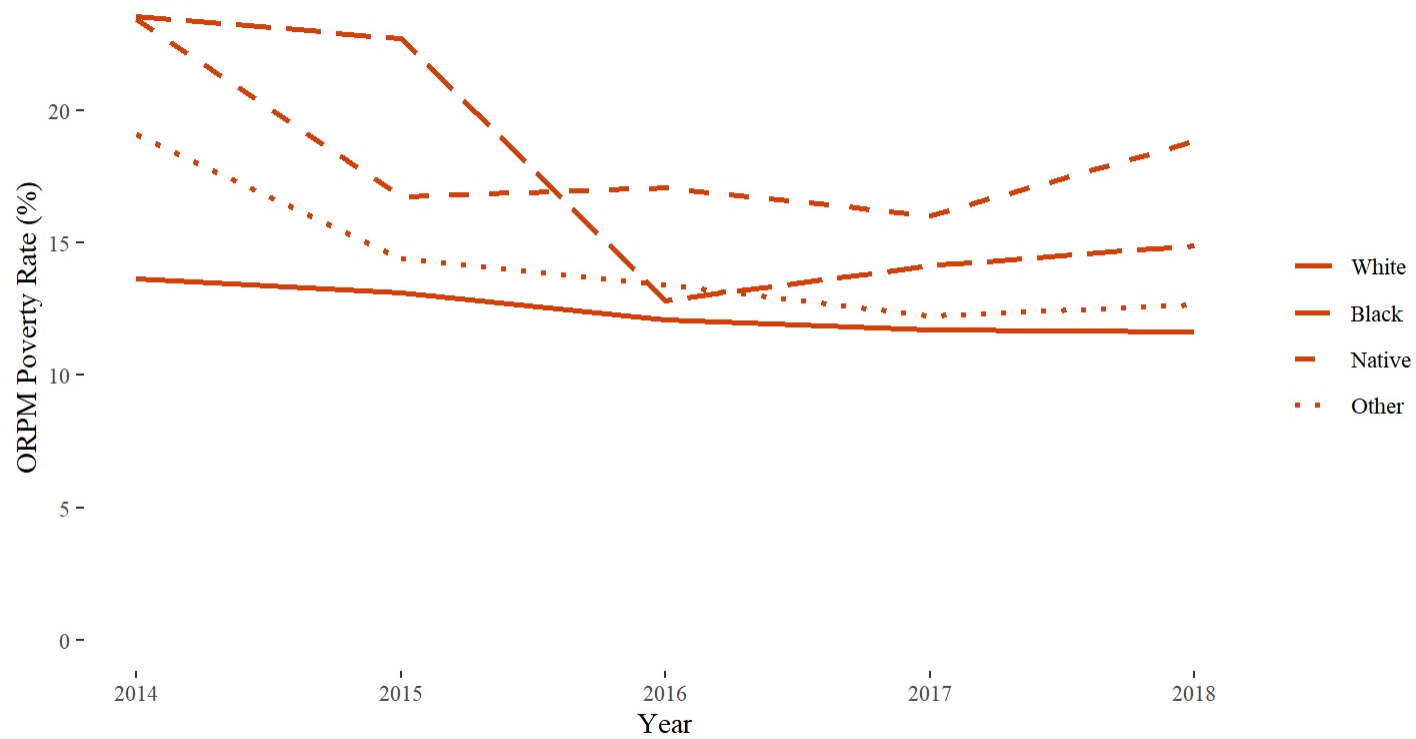
Source: Oregon Poverty Measure Project

Extras: Deep poverty and age over time



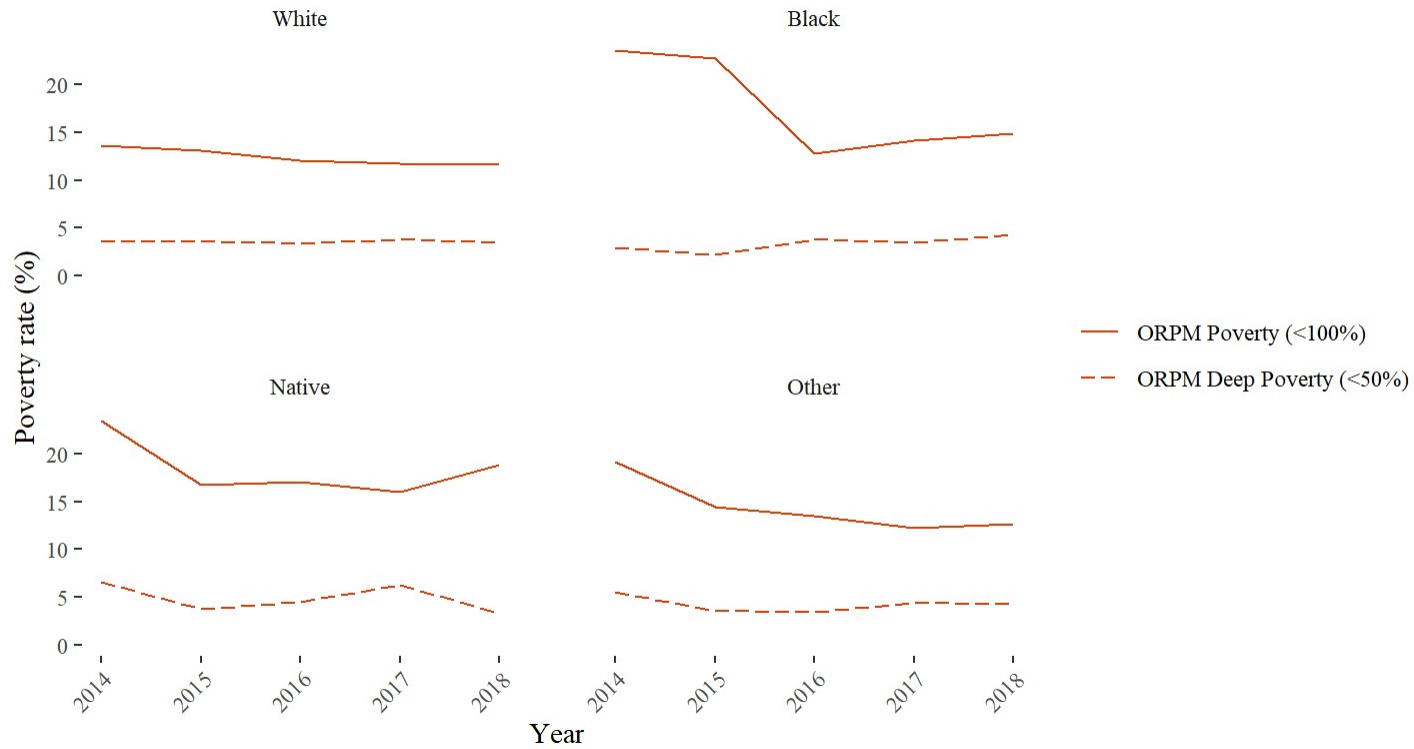
Source: Oregon Poverty Measure Project

Extras: Poverty over time by racial group



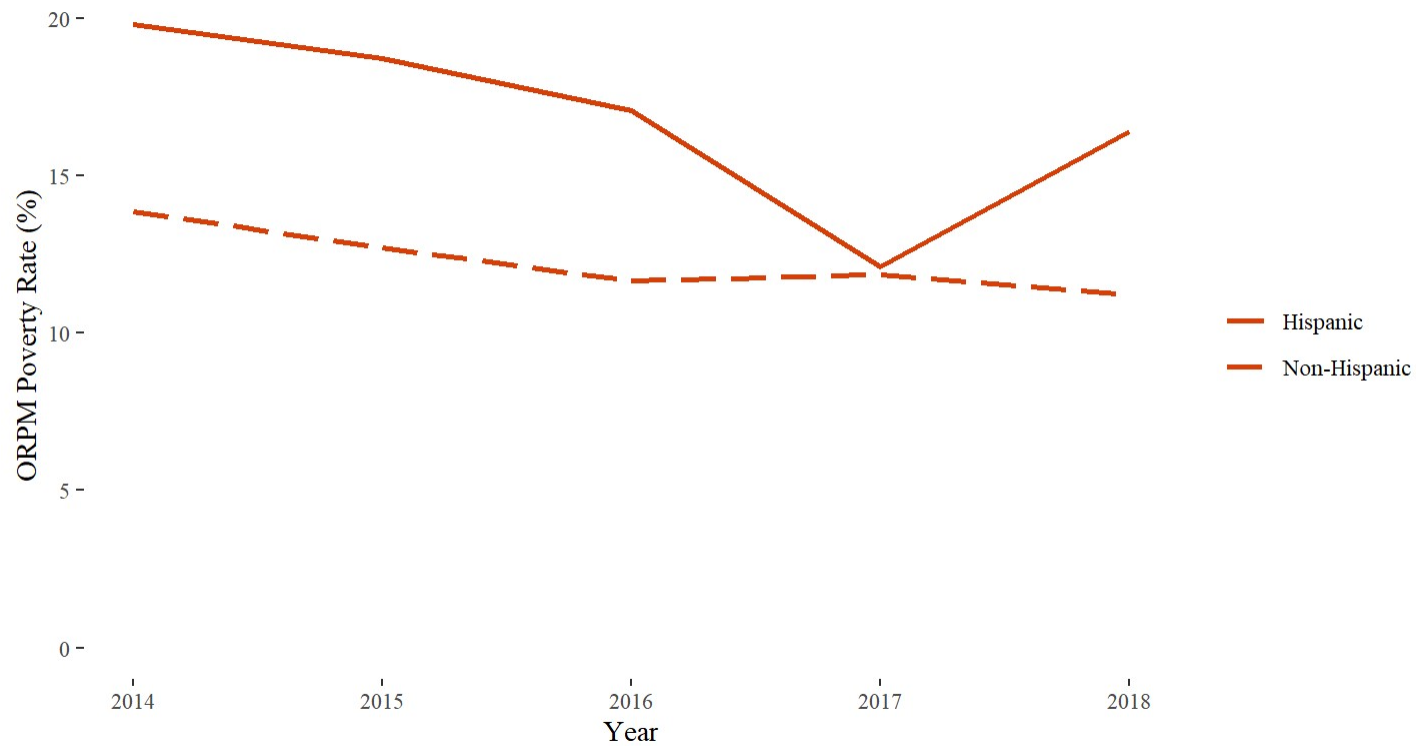
Source: Oregon Poverty Measure Project

Extras: Deep poverty and race



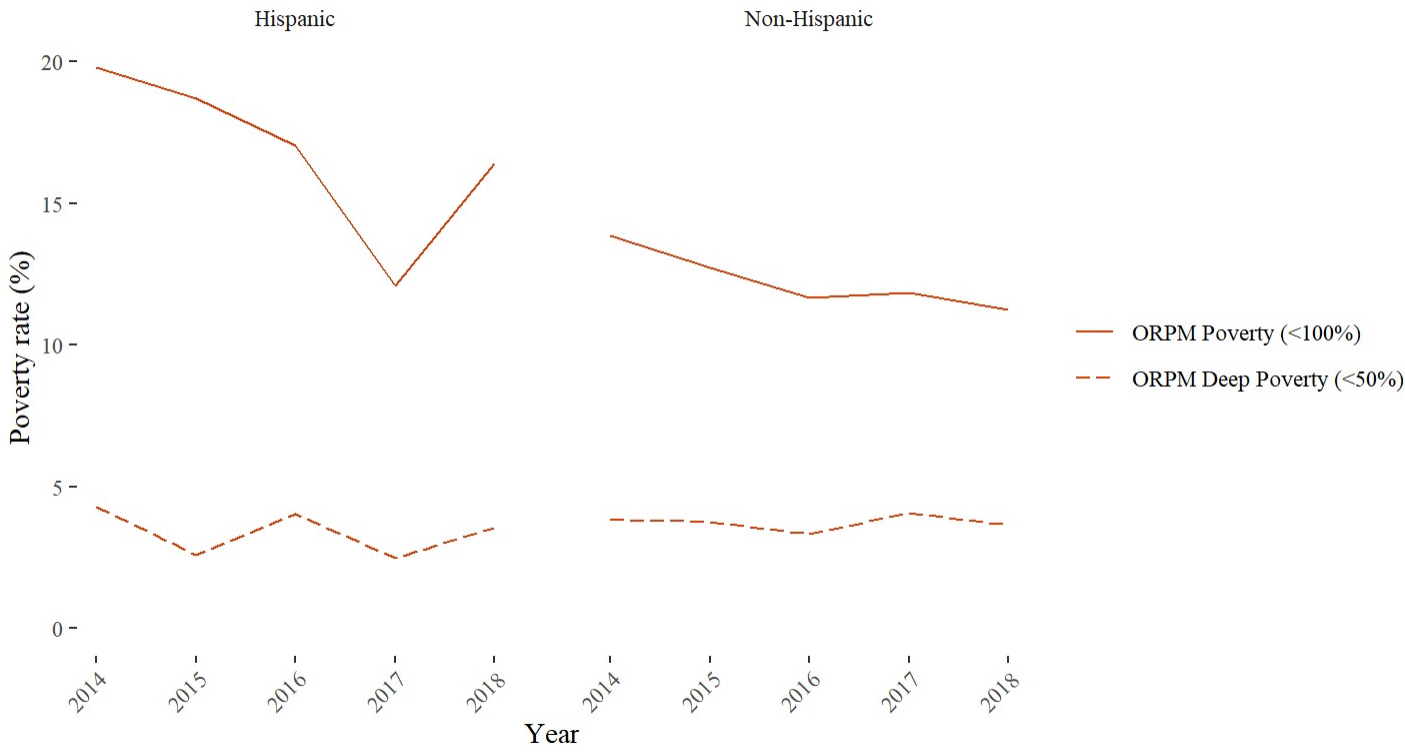
Source: Oregon Poverty Measure Project

Extras: Poverty over time by ethnicity (Hispanic) group



Source: Oregon Poverty Measure Project

Extras: Deep poverty and ethnicity



Source: Oregon Poverty Measure Project