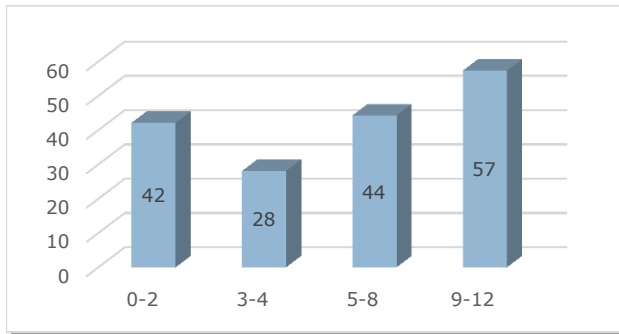


Child Care and Education in Wheeler County

How many children under 13 live in Wheeler County?¹

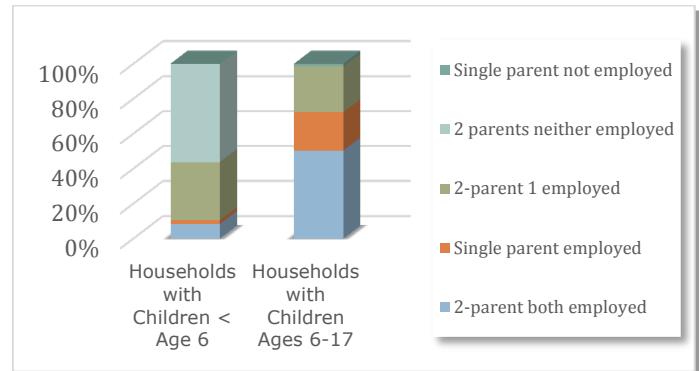


In 2014, there were **172** children aged 0-12 years:

- **42** children age 0-2
- **28** children age 3-4
- **44** children 5-8
- **57** children 9-12



How much child care and education do we need?²



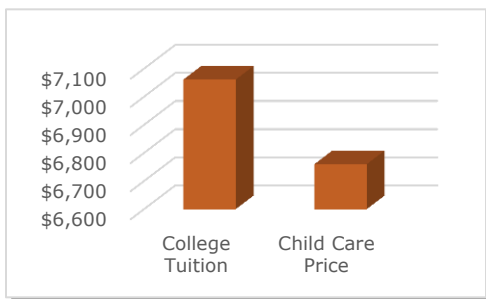
How much child care do we have?³

The following community resources exist for families in Wheeler County:

- **28** slots in child care centers
- **13** slots in family child care homes

Wheeler County currently has **23** visible slots per 100 children

10% of families in Wheeler County with children under 6 are likely to need child care due to parental employment.



How much does child care cost?^{4&5}

The price of child care in Wheeler County is close to the cost of college tuition at Oregon's public universities.

- Median annual price of child care in Wheeler County **\$6,760**
- Average annual price of public university tuition in Oregon **\$7,061**
- Care of a toddler as a percent of the annual income of a minimum wage worker **36%**

Note: Due to the small number of centers in Wasco County, there is insufficient data to accurately report child care worker salary

Number of children whose families receive subsidies from the Department of Human Services to help pay for child care⁷

On average, families of **0** Wheeler County children per month received a subsidy to help pay for child care in 2014

For more information about child care in Wheeler County, contact:

Child Care Partners
 400 E Scenic Dr.
 Columbia Gorge Community College
 The Dalles, Oregon 97058
 541.506.6131 or toll free 1.800.755.1143
 Email: ccp@cgcc.edu Website: www.cgcc.edu/childcare

¹ 2013 population estimates from the Center for Population Research and Census at Portland State University. ² US Census, ACS, B23009, 2013 3-year estimate for Oregon. ³ Price of child care for a toddler based on the median price of child care in a Baker County family child care home in Oregon as of March, 2014, OCCRP, OSU. ⁴ 2014 county-level cost of child care from Grobe, D. & Weber, R. 2014 Oregon Child Care Market Price Study. Oregon Child Care Research Partnership, OSU. ⁵ Average annual tuition from an OUS undergraduate student during 2014-2015 academic year from Oregon University System website. ⁶ Oregon Child Care Division, 2013. ⁷ Subsidy data for Federal Fiscal Year (FFY) 2014 provided by the Department of Human Services. Analysis by OCCRP, OSU.