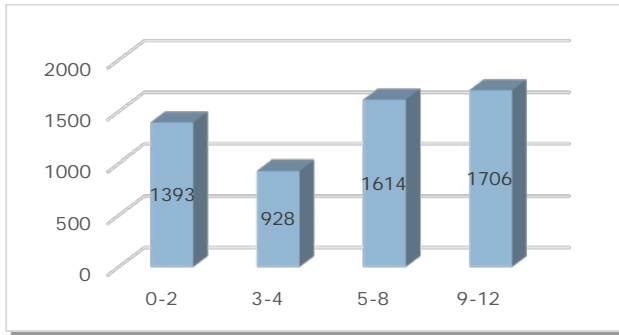


# Child Care and Education in Lincoln County

## How many children under 13 live in Lincoln County?<sup>1</sup>

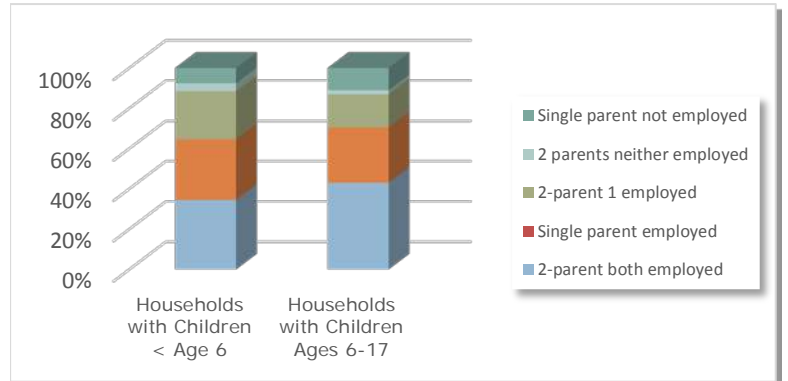


In 2014, there were **5,641** children aged 0-12 years:

- **1,393** children age 0-2
- **928** children age 3-4
- **1,614** children 5-8
- **1,706** children 9-12



## How much child care and education do we need?<sup>2</sup>



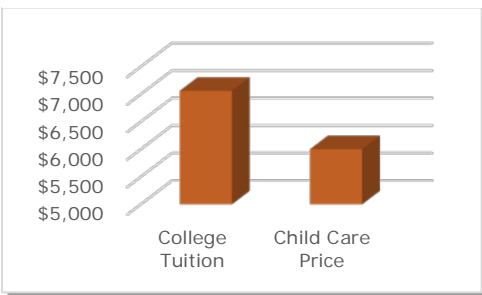
**89%** of families in Lincoln County with children under 6 are likely to need child care due to parental employment.

## How much child care do we have?<sup>3</sup>

The following community resources exist for families in Lincoln County:

- **877** slots in child care centers
- **181** slots in family child care homes

Lincoln County currently has **19** visible slots per 100 children



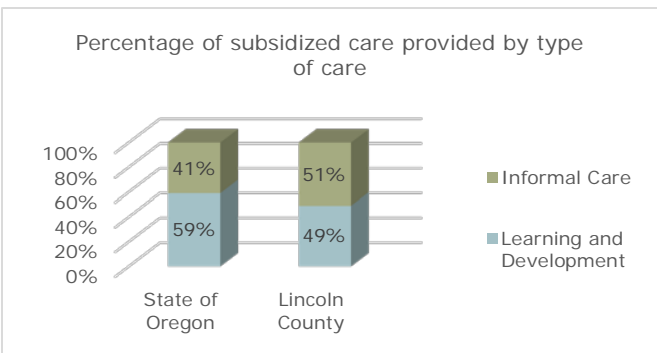
## How much does child care cost?<sup>4&5</sup>

The price of child care in Lincoln County is close to the cost of college tuition at Oregon's public universities.

- Median annual price of child care in Lincoln County **\$6,000**
- Average annual price of public university tuition in Oregon **\$7,061**
- Care of a toddler as a percent of the annual income of a minimum wage worker **32%**

In 2013, child care workers earned a median salary between **\$22,880** and **\$41,600**<sup>6</sup>

## Number of children whose families receive subsidies from the Department of Human Services to help pay for child care<sup>7</sup>



On average, families of **85** Lincoln County children per month received a subsidy to help pay for child care in 2014

For more information about child care in Lincoln County, contact:

Family Care Connection  
 1211 SE Bay Blvd.  
 OSU- Lincoln County Extension  
 Newport, Oregon 97365  
 541.265.2558 or toll free 1.800.603.2728  
 Email: [familycareconnection@oregonstate.edu](mailto:familycareconnection@oregonstate.edu)  
 Website: [extension.oregonstate.edu/Lincoln/family\\_care](http://extension.oregonstate.edu/Lincoln/family_care)

<sup>1</sup> 2013 population estimates from the Center for Population Research and Census at Portland State University. <sup>2</sup> US Census, ACS, B23009, 2013 3-year estimate for Oregon. <sup>3</sup> Price of child care for a toddler based on the median price of child care in a Baker County family child care home in Oregon as of March, 2014, OCCRP, OSU. <sup>4</sup> 2014 county-level cost of child care from Grobe, D. & Weber, R. 2014 Oregon Child Care Market Price Study. Oregon Child Care Research Partnership, OSU. <sup>5</sup> Average annual tuition from an OUS undergraduate student during 2014-2015 academic year from Oregon University System website. <sup>6</sup> Oregon Child Care Division, 2013. <sup>7</sup> Subsidy data for Federal Fiscal Year (FFY) 2014 provided by the Department of Human Services. Analysis by OCCRP, OSU.