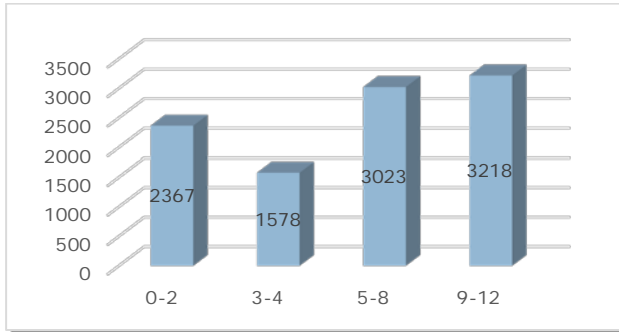


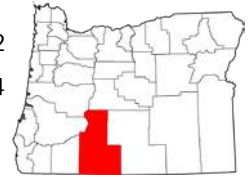
Child Care and Education in Klamath County

How many children under 13 live in Klamath County?¹

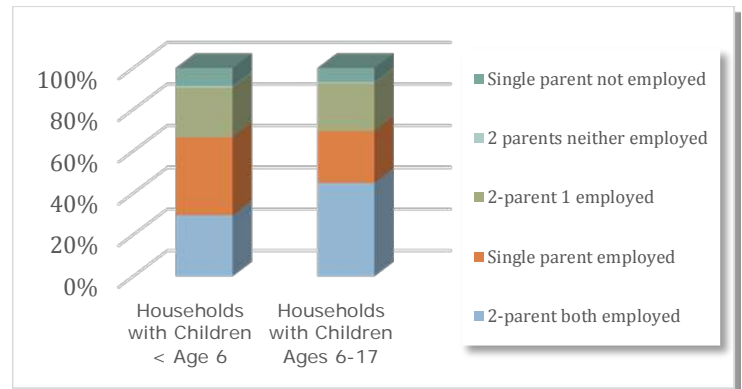


In 2014, there were **10,185** children aged 0-12 years:

- **2,367** children age 0-2
- **1,578** children age 3-4
- **3,023** children 5-8
- **3,218** children 9-12



How much child care and education do we need?²



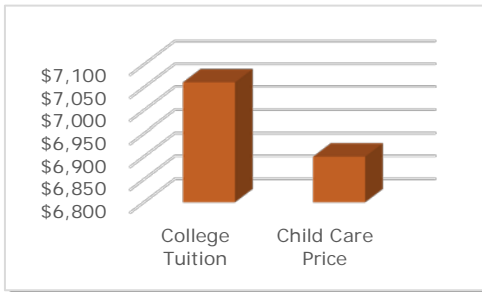
67% of families in Klamath County with children under 6 are likely to need child care due to parental employment.

How much child care do we have?³

The following community resources exist for families in Klamath County:

- **1,290** slots in child care centers
- **279** slots in family child care homes

Baker County currently has **15** visible slots per 100 children



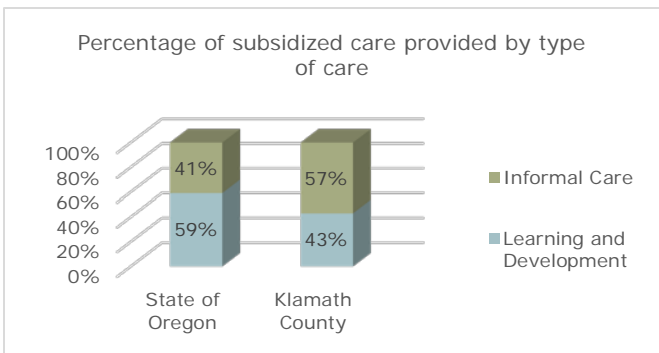
How much does child care cost?^{4&5}

The price of child care in Klamath County is close to the cost of college tuition at Oregon's public universities.

- Median annual price of child care in Klamath County **\$6,900**
- Average annual price of public university tuition in Oregon **\$7,061**
- Care of a toddler as a percent of the annual income of a minimum wage worker **36%**

In 2013, child care workers earned a median salary between **\$22,131** and **\$30,784**⁶

Number of children whose families receive subsidies from the Department of Human Services to help pay for child care⁷



On average, families of **191** Klamath County children per month received a subsidy to help pay for child care in 2014

For more information about child care in Klamath County, contact:

Child Care Resource Network of Southern Oregon
 35 S. Bartlett Street
 Medford, Oregon 97501
 541.842.2590 or toll free 1.800.866.9034
 Email: CCRNReferral@jobcouncil.org
 Website: www.ccrnso.org

¹ 2013 population estimates from the Center for Population Research and Census at Portland State University. ² US Census, ACS, B23009, 2013 3-year estimate for Oregon. ³ Price of child care for a toddler based on the median price of child care in a Baker County family child care home in Oregon as of March, 2014, OCCRP, OSU. ⁴ 2014 county-level cost of child care from Grobe, D. & Weber, R. 2014 Oregon Child Care Market Price Study. Oregon Child Care Research Partnership, OSU. ⁵ Average annual tuition from an OUS undergraduate student during 2014-2015 academic year from Oregon University System website. ⁶ Oregon Child Care Division, 2013. ⁷ Subsidy data for Federal Fiscal Year (FFY) 2014 provided by the Department of Human Services. Analysis by OCCRP, OSU.