

---

# 2020 Oregon Child Care Market Price Study: Supplemental Findings

Prepared for **Oregon Department of Human Services**  
and **Oregon Early Learning Division**

*Megan Pratt*  
*Laurie Houston*  
*Michaella Sektan*

# Contents

Background .....	3
Purpose of this Supplemental Document.....	3
Findings .....	4
Figure 1. Comparison of 2020 Rate Areas and Oregon Statewide Prices by Child Care Slots .....	6
Table 1. 2020 Prices by 2020 Rate Areas for Small Home-based Child Care .....	7
Table 2. 2020 Prices by 2020 Rate Areas for Center Care.....	11
Table 3. 2020 Prices by 2020 Rate Areas for Large Home-based Care .....	15
Table 4. 2020Rate Areas By Zip Code, Sorted By County .....	19

## Background

Prior market price studies were conducted approximately every two years from 1990 forward. All studies relied on data collected by Child Care Resource and Referral Agencies (CCR&R) and all but one involved analysis of data stored in the CCR&R database; the 1999 study involved a survey of providers drawn from that database. Since 1994 (with the exception of the 1999 survey) researchers have analyzed the data by zip code looking for price clusters. Through 2008 researchers found prices for centers, large home-based care, and small home-based care<sup>i</sup> to cluster into three groups known as rate areas.

In Oregon market price studies for 2010 and 2012, analyses of prices indicated that there were changes in how providers were pricing services and that the three clusters may no longer accurately describe prices. Analyses indicated that center and large home-based child care prices were steadily increasing and that prices of small home-based child care providers were stagnating. In addition, programs were increasingly moving into the highest rate areas or remaining in the current rate area, in part, due to an Oregon Department of Human Services policy that no zip code should move to a lower rate area. Additionally, higher zip code average prices for centers and large home-based care were sometimes pulling small home-based child care homes into a higher rate area. There were signs that center and small home-based child care prices were not clustering in similar ways. These findings raised question about whether or not the three rate areas were accurately describing prices in the child care market.

In analyzing the 2014 and 2016 data we found a continuation of the trends observed in 2010 and 2012 data. Using guidance from a national study on market price surveys we looked into alternative methods to identify zip code areas with similar child care prices. After careful consideration we decided to use a statistical clustering method that looks for groups or clusters that occur in the data and provides a systematic way to find the optimal natural breaks between groups. This method was used in the 2014, 2016, and 2018 Market Price Studies; and now again in this 2020 study. The findings from the 2020 analyses can be found in *the 2020 Oregon Child Care Market Price Study*. That study found that small home-based child care prices fell into three clusters and that center and large home-based care prices fell into four clusters.

## Purpose of this Supplemental Document

The clusters created by the use of statistical clustering do not match the three rate areas identified in earlier studies (A, B, C)<sup>ii</sup>. Thus, for the final report we analyzed the 2020 price data by three rate areas as was done in the past (a similar strategy was used for the 2014 through 2018 studies). As noted below, the analyses further documented that provider changes in pricing practices made the three rate areas no longer a valid representation of market prices. But, analyzing data by the three rate areas allowed us to compare 2020 market prices with maximum payment rates currently used by the Oregon Department of Human Services (ODHS). This supplemental document was produced for ODHS's use in making the transition from geographically grouping prices based on the previous three rate areas to grouping prices in the clusters that appear to better represent the current market. Specifically, this supplemental document presents the 2020 findings using the same three rate areas for all three types of care to geographically group prices by zip code.

---

<sup>i</sup> Home-based child care providers are typically identified by their regulatory status: a) small home-based providers are known as registered family child care, and b) large home-based providers are known as certified family child care. We use the terms small and large home-based care rather than the regulatory titles throughout this report.

<sup>ii</sup> At time of data collection (January-March, 2020), facilities in Rate Area C were being reimbursed using the Rate Area B maximum reimbursement rates tables.

## Findings

To test the validity of the three rate areas (A, B, C) we compared Oregon statewide prices to prices in the three rate areas. If the areas were valid, within care type and age group served, Area A prices should exceed the statewide price, Area C prices should be lower than the statewide price, and Area B rates should approximate the statewide price. Figure 1 on page 7 displays graphs comparing the 75<sup>th</sup> percentile monthly prices per child care slot, across type of care, and age group served. The graphs provide evidence that the three rate areas no longer accurately capture the distribution of prices due to a combination of changes in provider pricing practices and the practice of not allowing zip codes to move to a lower rate area.

Indeed, use of the three rate areas show:

- (a) statewide prices more closely represent rate Area A than B, especially for centers and large home-based care
- (b) there is less distinction between the prices in rate areas B and C, especially for centers and large home-based care.

One would expect there to be more distinction in the rate areas if they were accurately describing the price distributions across the state.

Overall, the geographic analysis described below shows the child care prices continue to be lower in rural areas of the state and higher in the Portland metropolitan area, parts of the Mid-Willamette Valley, and parts of Hood River, Deschutes, and Jackson counties.

- **Rate Area A** contains zip codes with some of the highest prices and has 55% of all child care facilities (1% less than in 2018). Area A includes the Portland metropolitan area, Mount Hood, Corvallis, Independence, Monmouth, Seal Rock, Eugene, Springfield, Ashland, Bend, and Gold Hill.
- **Rate Area B** has 34% of all child care facilities (1% more than in 2018), and includes the cities of Salem, Stayton, Astoria, Hammond, Coos Bay, Coquille, Lincoln City, Sweet Home, Sisters, Redmond, Medford, Roseburg, Albany, Woodburn, Halsey, Philomath, areas outside the Portland metropolitan area, and the Mid-Willamette Valley.
- **Rate Area C** includes all communities not in Area A or B, including most of Oregon's rural areas. Rate Area C includes 11% of all child care facilities. The same percentage as in 2018.

***The percent of slots that can be purchased with the value of ODHS payment rates increased slightly from 65% to 66% between 2018 and 2020.*** The 2020 prices at the 75<sup>th</sup> percentile for the identified rate areas were similar to market price surveys since 2008 (see Tables 1-3 starting on page 8).

The state subsidy's maximum payment rate affects subsidy parents' access to all types of child care in the community. The study explored access in two ways:

- (1) percent of slots statewide that can be purchased at the maximum full-time subsidy rate
- (2) percent of facility care by zip code that can be purchased at the subsidy rate. This second measure was created to determine if the amount of access varied by geographic location.

- (1) Findings on percent of slots that can be purchased at maximum payment rate in Oregon is shown in the Table below. In Oregon, current licensed rate maximums are adequate to purchase approximately 66% of child care toddler slots statewide (see Table). This is down 11% from the highest level in the 2016 market price study, but significantly greater than years prior to 2008.

**Percent of Child Care Toddler Slots that can be Purchased at Full-time Licensed-Rate Maximums across Center, Small Home-based, and Large Home-based Care Types**

2000	2002	2004	2006	2008	2010	2012	2014	2016	2018	2020
38%	24%	21%	26%	68%	64%	58%	69%	76%	65%	66%

Further, the table below illustrates that potential access is slightly higher in Rate Area C (77%) and lowest in Rate Area B (63%)

**Statewide Number and Percent of Facilities in 2020 that are Below or Equal to the Licensed Rate Maximum, by Rate Area.**

Rate Area	# of Facilities	Facilities with rates less than or equal to licensed rate maximum	
		#	%
<b>State</b>	1868	1239	66%
A	1034	684	66%
B	632	400	63%
C	202	155	77%

- (2) Findings on access by geographic location are shown in the Table below. For each type of care, between 44% and 55% of families are in zip codes that have potential access to greater than 75% of market care in their zip code. In 44% of zip codes, families have access to 75% or more of small home-based care slots, 55% for center care, and 53% for large home-based care. The ODHS licensed rate maximums are not adequate to purchase any market child care in 14% of small home-based, 12% of center, and 11% of large home-based care zip code areas that have prices.

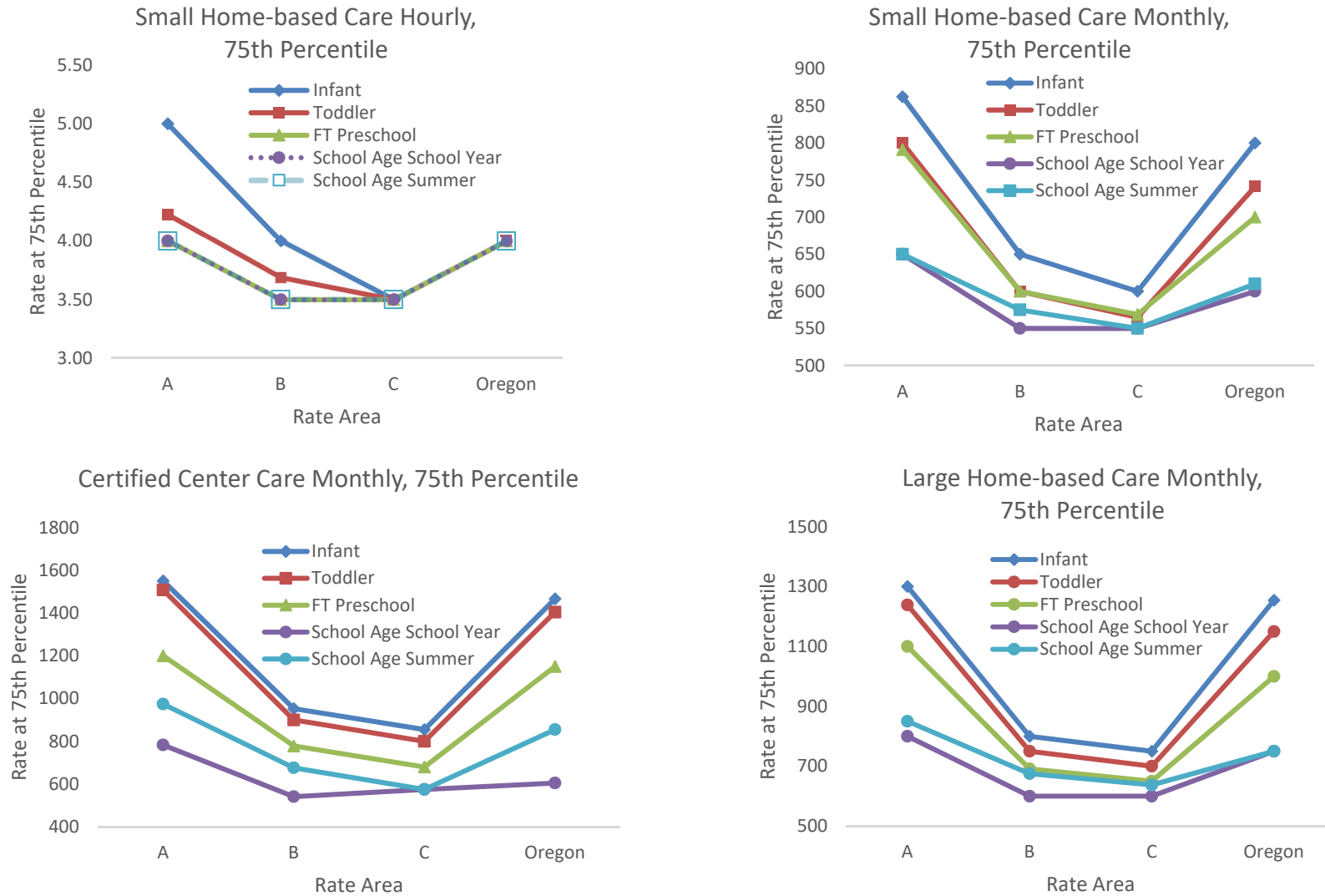
**Percent of Zip Codes with 0-75+% facilities at or below the ODHS Licensed Rate Maximums**

Percent of facilities that charge at or below the Rate Maximum	Small Home-based Care		Center Care		Large Home-based Care	
	Number of Zip Codes	Percent of Zip Codes	Number of Zip Codes	Percent of Zip Codes	Number of Zip Codes	Percent of Zip Codes
0%	24	14%	14	12%	14	11%
1% to 25%	5	3%	5	4%	0	0%
26% to 50%	26	16%	17	14%	19	15%
51% to 75%	39	23%	18	15%	28	22%
<b>Greater than 75%</b>	<b>73</b>	<b>44%</b>	<b>67</b>	<b>55%</b>	<b>69</b>	<b>53%</b>
<b>Totals</b>	<b>167</b>	<b>100%</b>	<b>121</b>	<b>100%</b>	<b>130</b>	<b>100%</b>

The number of zip codes for center and certified care is lower than family care because a larger number of zip code areas have family child care facilities than have centers or certified care.

**Figure 1.**

**Comparison of 2020 Rate Areas and Oregon Statewide Prices by Child Care Slots**



School-age school-year prices are inherently part-time prices because they typically reflect 20-30 hours of care per week, before and after school.

**Table 1. 2020 Prices by 2020 Rate Areas for Small Home-based Child Care**

	Rate Area A			Rate Area B			Rate Area C		
	Facilities	Slots	Licensed Rate Maximums	Facilities	Slots	Licensed Rate Maximums	Facilities	Slots	Licensed Rate Maximums
<b>INFANT</b>									
<b>Hourly</b>	N=186	N=1621	\$4.00	N=161	N=1299	\$3.50	N=60	N=463	\$3.50
90 <sup>th</sup>	\$6.00	\$6.00		\$4.50	\$4.50		\$4.38	\$4.50	
75 <sup>th</sup>	\$5.00	\$5.00		\$4.00	\$4.00		\$3.50	\$3.50	
60 <sup>th</sup>	\$4.00	\$4.00		\$3.50	\$3.50		\$3.50	\$3.50	
50 <sup>th</sup>	\$4.00	\$4.00		\$3.50	\$3.50		\$3.50	\$3.50	
25 <sup>th</sup>	\$3.50	\$3.50		\$3.05	\$3.05		\$3.00	\$3.00	
10 <sup>th</sup>	\$3.00	\$3.00		\$3.00	\$3.00		\$2.86	\$2.75	
<b>Monthly</b>	N=168	N=1393	\$800	N=220	N=1763	\$600	N=61	N=508	\$600
90 <sup>th</sup>	\$1,085	\$1,085		\$750	\$750		\$700	\$700	
75 <sup>th</sup>	\$900	\$900		\$650	\$650		\$600	\$600	
60 <sup>th</sup>	\$800	\$800		\$600	\$600		\$600	\$600	
50 <sup>th</sup>	\$800	\$800		\$600	\$600		\$600	\$600	
25 <sup>th</sup>	\$692	\$700		\$550	\$555		\$500	\$500	
10 <sup>th</sup>	\$600	\$600		\$500	\$500		\$450	\$450	
<b>TODDLER</b>									
<b>Hourly</b>	N=219	N=1899	\$4.00	N=190	N=1527	\$3.50	N=77	N=575	\$3.50
90 <sup>th</sup>	\$5.50	\$5.00		\$4.00	\$4.00		\$4.25	\$4.00	
75 <sup>th</sup>	\$4.50	\$4.50		\$3.75	\$3.67		\$3.50	\$3.50	
60 <sup>th</sup>	\$4.00	\$4.00		\$3.50	\$3.50		\$3.50	\$3.50	
50 <sup>th</sup>	\$4.00	\$4.00		\$3.50	\$3.50		\$3.50	\$3.50	
25 <sup>th</sup>	\$3.50	\$3.50		\$3.00	\$3.00		\$3.00	\$3.00	
10 <sup>th</sup>	\$3.00	\$3.00		\$3.00	\$3.00		\$2.75	\$2.75	

*Continued on next page*

Table 1. 2020 Prices by 2020 Rate Areas for Small Home-based Child Care

	Rate Area A			Rate Area B			Rate Area C		
	Facilities	Slots	Licensed Rate Maximums	Facilities	Slots	Licensed Rate Maximums	Facilities	Slots	Licensed Rate Maximums
<b>TODDLER (continued)</b>									
<b>Monthly</b>	N=204	N=1672	\$750	N=268	N=2241	\$555	N=70	N=605	\$555
90 <sup>th</sup>	\$975	\$960		\$700	\$700		\$600	\$600	
75 <sup>th</sup>	\$800	\$800		\$616	\$600		\$565	\$565	
60 <sup>th</sup>	\$750	\$750		\$600	\$600		\$555	\$555	
50 <sup>th</sup>	\$750	\$750		\$555	\$555		\$555	\$555	
25 <sup>th</sup>	\$650	\$650		\$533	\$540		\$500	\$520	
10 <sup>th</sup>	\$550	\$550		\$500	\$500		\$450	\$450	
<b>PRESCHOOL AGE</b>									
<b>Hourly</b>	N=257	N=2184	\$3.67	N=213	N=1685	\$3.30	N=90	N=664	\$3.30
90 <sup>th</sup>	\$5.50	\$5.50		\$4.00	\$4.00		\$4.00	\$4.00	
75 <sup>th</sup>	\$4.00	\$4.20		\$3.60	\$3.50		\$3.50	\$3.50	
60 <sup>th</sup>	\$4.00	\$4.00		\$3.50	\$3.50		\$3.50	\$3.50	
50 <sup>th</sup>	\$3.67	\$3.67		\$3.30	\$3.30		\$3.20	\$3.30	
25 <sup>th</sup>	\$3.00	\$3.00		\$3.00	\$3.00		\$3.00	\$3.00	
10 <sup>th</sup>	\$3.00	\$3.00		\$3.00	\$3.00		\$2.50	\$2.50	
<b>Monthly</b>	N=232	N=1867	\$730	N=302	N=2458	\$550	N=80	N=688	\$550
90 <sup>th</sup>	\$900	\$900		\$700	\$680		\$600	\$600	
75 <sup>th</sup>	\$800	\$800		\$600	\$600		\$575	\$570	
60 <sup>th</sup>	\$730	\$730		\$575	\$564		\$550	\$550	
50 <sup>th</sup>	\$700	\$700		\$550	\$550		\$550	\$550	
25 <sup>th</sup>	\$600	\$600		\$525	\$530		\$500	\$500	
10 <sup>th</sup>	\$525	\$525		\$475	\$500		\$450	\$450	

Continued on next page



Table 1. 2020 Prices by 2020 Rate Areas for Small Home-based Child Care

		Rate Area A			Rate Area B			Rate Area C		
		Facilities	Slots	Licensed Rate Maximums	Facilities	Slots	Licensed Rate Maximums	Facilities	Slots	Licensed Rate Maximums
<b>SCHOOL AGE SCHOOL YEAR</b>										
<b>Hourly</b>	N=256	N=2146		\$3.70	N=242	N=1872	\$3.30	N=90	N=674	\$3.30
90 <sup>th</sup>	\$6.00	\$6.00			\$4.00	\$4.00		\$4.00	\$4.00	
75 <sup>th</sup>	\$4.50	\$4.50			\$3.50	\$3.50		\$3.50	\$3.50	
60 <sup>th</sup>	\$4.00	\$4.00			\$3.50	\$3.50		\$3.50	\$3.50	
50 <sup>th</sup>	\$3.66	\$3.65			\$3.30	\$3.30		\$3.23	\$3.30	
25 <sup>th</sup>	\$3.00	\$3.00			\$3.00	\$3.00		\$3.00	\$3.00	
10 <sup>th</sup>	\$3.00	\$3.00			\$2.90	\$3.00		\$2.50	\$2.50	
<b>Monthly</b>	N=163	N=1360		\$610	N=204	N=1768	\$510	N=54	N=458	\$510
90 <sup>th</sup>	\$780	\$780			\$600	\$600		\$600	\$600	
75 <sup>th</sup>	\$650	\$650			\$550	\$550		\$550	\$520	
60 <sup>th</sup>	\$610	\$610			\$510	\$510		\$510	\$510	
50 <sup>th</sup>	\$600	\$600			\$500	\$500		\$510	\$510	
25 <sup>th</sup>	\$480	\$500			\$393	\$383		\$431	\$431	
10 <sup>th</sup>	\$350	\$350			\$300	\$280		\$240	\$240	
<b>SCHOOL AGE SUMMER</b>										
<b>Hourly</b>	N=196	N=1664		\$3.70	N=167	N=1314	\$3.30	N=82	N=611	\$3.30
90 <sup>th</sup>	\$5.00	\$5.00			\$4.00	\$4.00		\$4.00	\$4.00	
75 <sup>th</sup>	\$4.00	\$4.00			\$3.50	\$3.50		\$3.50	\$3.50	
60 <sup>th</sup>	\$4.00	\$4.00			\$3.50	\$3.50		\$3.50	\$3.50	
50 <sup>th</sup>	\$3.50	\$3.50			\$3.30	\$3.30		\$3.30	\$3.30	
25 <sup>th</sup>	\$3.00	\$3.00			\$3.00	\$3.00		\$3.00	\$3.00	
10 <sup>th</sup>	\$2.50	\$2.50			\$3.00	\$2.89		\$2.50	\$2.50	

Continued on next page

Table 1. 2020 Prices by 2020 Rate Areas for Small Home-based Child Care

		Rate Area A			Rate Area B			Rate Area C		
		Facilities	Slots	Licensed Rate Maximums	Facilities	Slots	Licensed Rate Maximums	Facilities	Slots	Licensed Rate Maximums
<b>SCHOOL AGE SUMMER (continued)</b>										
<b>Monthly</b>	N=113	N=929	\$610	N=180	N=1527	\$510	N=60	N=486	\$510	
90 <sup>th</sup>	\$750	\$750		\$650	\$650		\$600	\$600		
75 <sup>th</sup>	\$650	\$650		\$600	\$600		\$550	\$550		
60 <sup>th</sup>	\$610	\$610		\$550	\$550		\$510	\$510		
50 <sup>th</sup>	\$610	\$610		\$525	\$525		\$510	\$510		
25 <sup>th</sup>	\$510	\$510		\$500	\$500		\$485	\$475		
10 <sup>th</sup>	\$400	\$400		\$400	\$450		\$435	\$435		

**Table 2. 2020 Prices by 2020 Rate Areas for Center Care**

	Rate Area A			Rate Area B			Rate Area C		
	Facilities	Slots	Licensed Rate Maximums	Facilities	Slots	Licensed Rate Maximums	Facilities	Slots	Licensed Rate Maximums
<b>INFANT</b>									
<b>Hourly</b>	N=12	N=94	\$12.00	N=9	N=47	\$5.00	N=6	N=41	\$5.00
90 <sup>th</sup>	\$17.00	\$12.00		\$7.50	\$6.50		\$6.00	\$6.00	
75 <sup>th</sup>	\$12.00	\$12.00		\$5.70	\$5.70		\$5.00	\$6.00	
60 <sup>th</sup>	\$12.00	\$12.00		\$4.50	\$5.70		\$5.00	\$5.00	
50 <sup>th</sup>	\$10.00	\$10.00		\$4.30	\$4.50		\$4.75	\$5.00	
25 <sup>th</sup>	\$6.90	\$7.30		\$4.00	\$4.30		\$3.50	\$5.00	
10 <sup>th</sup>	\$6.00	\$6.50		\$3.05	\$4.00		\$2.00	\$4.50	
<b>Monthly</b>	N=181	N=2029	\$1,415	N=61	N=482	\$855	N=23	N=164	\$855
90 <sup>th</sup>	\$1,695	\$1,705		\$1,100	\$1,190		\$860	\$855	
75 <sup>th</sup>	\$1,550	\$1,595		\$985	\$1,010		\$855	\$855	
60 <sup>th</sup>	\$1,429	\$1,500		\$875	\$900		\$800	\$800	
50 <sup>th</sup>	\$1,405	\$1,430		\$855	\$866		\$695	\$695	
25 <sup>th</sup>	\$1,200	\$1,256		\$775	\$790		\$620	\$620	
10 <sup>th</sup>	\$997	\$1,125		\$620	\$725		\$550	\$550	
<b>TODDLER</b>									
<b>Hourly</b>	N=11	N=124	\$7.00	N=10	N=123	\$5.00	N=8	N=67	\$5.00
90 <sup>th</sup>	\$10.00	\$10.00		\$6.88	\$6.25		\$6.00	\$6.00	
75 <sup>th</sup>	\$8.40	\$8.40		\$5.70	\$5.70		\$5.38	\$5.50	
60 <sup>th</sup>	\$7.00	\$7.00		\$4.50	\$4.50		\$5.00	\$5.50	
50 <sup>th</sup>	\$7.00	\$7.00		\$4.40	\$4.30		\$4.50	\$5.50	
25 <sup>th</sup>	\$5.80	\$6.90		\$4.00	\$3.90		\$3.50	\$5.00	
10 <sup>th</sup>	\$5.00	\$6.25		\$3.70	\$3.90		\$2.50	\$4.00	

*Continue on next page*

Table 2. 2020 Prices by 2020 Rate Areas for Center Care

		Rate Area A			Rate Area B			Rate Area C		
	Facilities	Slots	Licensed Rate Maximums	Facilities	Slots	Licensed Rate Maximums	Facilities	Slots	Licensed Rate Maximums	
<b>TODDLER (continued)</b>										
<b>Monthly</b>	N=226	N=4564	\$1,404	N=78	N=919	\$785	N=25	N=245	\$785	
90 <sup>th</sup>	\$1,680	\$1,705		\$1,055	\$1,083		\$845	\$845		
75 <sup>th</sup>	\$1,515	\$1,595		\$960	\$995		\$800	\$800		
60 <sup>th</sup>	\$1,400	\$1,515		\$825	\$875		\$785	\$785		
50 <sup>th</sup>	\$1,333	\$1,410		\$787	\$820		\$685	\$785		
25 <sup>th</sup>	\$1,123	\$1,200		\$706	\$730		\$618	\$600		
10 <sup>th</sup>	\$913	\$1,000		\$675	\$680		\$550	\$550		
<b>PRESCHOOL AGE</b>										
<b>Hourly</b>	N=22	N=565	\$6.75	N=20	N=532	\$4.00	N=12	N=189	\$4.00	
90 <sup>th</sup>	\$11.00	\$11.00		\$5.88	\$5.75		\$5.00	\$5.00		
75 <sup>th</sup>	\$9.00	\$9.00		\$4.78	\$4.95		\$4.13	\$4.25		
60 <sup>th</sup>	\$6.75	\$7.50		\$4.50	\$4.50		\$3.75	\$4.00		
50 <sup>th</sup>	\$6.00	\$6.75		\$4.43	\$4.50		\$3.50	\$3.50		
25 <sup>th</sup>	\$5.00	\$5.80		\$3.80	\$3.85		\$3.28	\$3.50		
10 <sup>th</sup>	\$4.40	\$4.50		\$3.48	\$3.50		\$2.50	\$3.25		
<b>Monthly</b>	N=297	N=10834	\$1,060	N=108	N=2871	\$680	N=28	N=784	\$680	
90 <sup>th</sup>	\$1,329	\$1,400		\$850	\$860		\$680	\$680		
75 <sup>th</sup>	\$1,200	\$1,260		\$767	\$792		\$678	\$650		
60 <sup>th</sup>	\$1,100	\$1,168		\$685	\$710		\$630	\$610		
50 <sup>th</sup>	\$1,054	\$1,081		\$668	\$680		\$603	\$595		
25 <sup>th</sup>	\$875	\$900		\$597	\$600		\$506	\$511		
10 <sup>th</sup>	\$737	\$775		\$500	\$550		\$415	\$415		

Continued on next page

Table 2. 2020 Prices by 2020 Rate Areas for Center Care

Rate Area A			Rate Area B			Rate Area C			
Facilities	Slots	Licensed Rate Maximums	Facilities	Slots	Licensed Rate Maximums	Facilities	Slots	Licensed Rate Maximums	
<b>SCHOOL AGE SCHOOL YEAR</b>									
<b>Hourly</b>	N=30	N=434	\$6.00	N=26	N=439	\$4.40	N=12	N=134	\$4.40
90 <sup>th</sup>	\$13.50	\$11.00		\$6.25	\$5.75		\$5.00	\$5.00	
75 <sup>th</sup>	\$8.40	\$7.50		\$4.95	\$4.95		\$4.15	\$5.00	
60 <sup>th</sup>	\$7.50	\$7.50		\$4.40	\$4.35		\$3.75	\$4.00	
50 <sup>th</sup>	\$7.00	\$7.00		\$4.13	\$4.00		\$3.63	\$3.75	
25 <sup>th</sup>	\$5.00	\$5.00		\$3.75	\$3.60		\$3.28	\$3.50	
10 <sup>th</sup>	\$4.45	\$4.40		\$3.50	\$3.50		\$3.00	\$3.25	
<b>Monthly</b>	N=127	N=3995	\$855	N=88	N=2851	\$575	N=14	N=259	\$575
90 <sup>th</sup>	\$1,000	\$804		\$629	\$500		\$600	\$600	
75 <sup>th</sup>	\$725	\$575		\$474	\$465		\$575	\$550	
60 <sup>th</sup>	\$548	\$500		\$375	\$319		\$511	\$309	
50 <sup>th</sup>	\$488	\$434		\$340	\$309		\$406	\$200	
25 <sup>th</sup>	\$365	\$365		\$309	\$309		\$200	\$200	
10 <sup>th</sup>	\$265	\$295		\$296	\$296		\$95	\$95	
<b>SCHOOL AGE SUMMER</b>									
<b>Hourly</b>	N=16	N=238	\$6.00	N=13	N=267	\$4.40	N=11	N=157	\$3.35
90 <sup>th</sup>	\$17.00	\$7.50		\$5.15	\$5.15		\$5.00	\$5.00	
75 <sup>th</sup>	\$8.50	\$7.50		\$4.60	\$4.60		\$4.00	\$5.00	
60 <sup>th</sup>	\$7.50	\$7.50		\$4.25	\$4.25		\$3.80	\$4.00	
50 <sup>th</sup>	\$7.20	\$7.00		\$4.00	\$3.85		\$3.75	\$4.00	
25 <sup>th</sup>	\$6.00	\$6.00		\$3.50	\$3.50		\$3.25	\$3.75	
10 <sup>th</sup>	\$5.00	\$6.00		\$3.00	\$2.85		\$2.50	\$3.25	

Continued on next page

Table 2. 2020 Prices by 2020 Rate Areas for Center Care

Rate Area A			Rate Area B			Rate Area C			
Facilities	Slots	Licensed Rate Maximums	Facilities	Slots	Licensed Rate Maximums	Facilities	Slots	Licensed Rate Maximums	
<b>SCHOOL AGE SUMMER (continued)</b>									
<b>Monthly</b>	N=65	N=1936	\$855	N=71	N=2149	\$575	N=11	N=201	\$575
90 <sup>th</sup>	\$1,100	\$1,100	\$710	\$629	\$580	\$590	\$580	\$590	
75 <sup>th</sup>	\$900	\$900	\$640	\$590	\$575	\$575	\$575	\$575	
60 <sup>th</sup>	\$850	\$848	\$590	\$590	\$575	\$575	\$575	\$575	
50 <sup>th</sup>	\$809	\$780	\$590	\$590	\$550	\$575	\$550	\$575	
25 <sup>th</sup>	\$584	\$500	\$550	\$500	\$498	\$500	\$498	\$500	
10 <sup>th</sup>	\$500	\$160	\$327	\$327	\$425	\$425	\$425	\$425	

**Table 3. 2020 Prices by 2020 Rate Areas for Large Home-based Care**

	Rate Area A			Rate Area B			Rate Area C		
	Facilities	Slots	Licensed Rate Maximums	Facilities	Slots	Licensed Rate Maximums	Facilities	Slots	Licensed Rate Maximums
<b>INFANT</b>									
<b>Hourly</b>	N=34	N=73	\$6.00	N=15	N=31	\$4.00	N=7	N=19	\$4.00
90 <sup>th</sup>	\$6.50	\$6.00		\$5.00	\$5.00		\$5.00	\$5.00	
75 <sup>th</sup>	\$6.00	\$6.00		\$4.50	\$4.50		\$4.00	\$4.00	
60 <sup>th</sup>	\$6.00	\$6.00		\$4.00	\$4.00		\$4.00	\$4.00	
50 <sup>th</sup>	\$6.00	\$6.00		\$4.00	\$4.00		\$4.00	\$4.00	
25 <sup>th</sup>	\$4.50	\$4.50		\$3.05	\$3.05		\$3.75	\$4.00	
10 <sup>th</sup>	\$4.00	\$4.00		\$2.50	\$2.35		\$3.50	\$3.50	
<b>Monthly</b>	N=219	N=652	\$1,254	N=103	N=207	\$750	N=19	N=38	\$750
90 <sup>th</sup>	\$1,550	\$1,650		\$1,000	\$1,000		\$780	\$780	
75 <sup>th</sup>	\$1,300	\$1,400		\$825	\$840		\$750	\$750	
60 <sup>th</sup>	\$1,254	\$1,254		\$750	\$750		\$700	\$715	
50 <sup>th</sup>	\$1,250	\$1,254		\$750	\$750		\$650	\$675	
25 <sup>th</sup>	\$1,000	\$1,000		\$625	\$625		\$600	\$600	
10 <sup>th</sup>	\$850	\$900		\$560	\$560		\$550	\$550	
<b>TODDLER</b>									
<b>Hourly</b>	N=41	N=120	\$6.00	N=25	N=85	\$4.00	N=12	N=44	\$4.00
90 <sup>th</sup>	\$7.00	\$7.00		\$5.00	\$5.00		\$5.00	\$5.00	
75 <sup>th</sup>	\$6.00	\$6.00		\$4.25	\$4.25		\$4.00	\$4.00	
60 <sup>th</sup>	\$6.00	\$6.00		\$4.00	\$4.00		\$4.00	\$4.00	
50 <sup>th</sup>	\$5.50	\$5.80		\$4.00	\$4.00		\$4.00	\$4.00	
25 <sup>th</sup>	\$4.00	\$4.38		\$3.70	\$4.00		\$3.50	\$3.50	
10 <sup>th</sup>	\$4.00	\$4.00		\$3.00	\$3.05		\$3.50	\$3.50	

*Continued on next page*

Table 3. 2020 Prices by 2020 Rate Areas for Large Home-based Care

	Rate Area A			Rate Area B			Rate Area C		
	Facilities	Slots	Licensed Rate Maximums	Facilities	Slots	Licensed Rate Maximums	Facilities	Slots	Licensed Rate Maximums
<b>TODDLER (continued)</b>									
<b>Monthly</b>	N=333	N=1413	\$1,140	N=141	N=447	\$700	N=26	N=90	\$700
90 <sup>th</sup>	\$1,450	\$1,568		\$875	\$900		\$700	\$770	
75 <sup>th</sup>	\$1,240	\$1,300		\$750	\$750		\$700	\$700	
60 <sup>th</sup>	\$1,140	\$1,150		\$700	\$700		\$680	\$700	
50 <sup>th</sup>	\$1,135	\$1,140		\$693	\$700		\$650	\$650	
25 <sup>th</sup>	\$925	\$1,000		\$600	\$600		\$600	\$600	
10 <sup>th</sup>	\$756	\$800		\$550	\$550		\$555	\$560	
<b>PRESCHOOL AGE</b>									
<b>Hourly</b>	N=41	N=226	\$5.05	N=26	N=155	\$3.75	N=12	N=63	\$3.75
90 <sup>th</sup>	\$6.00	\$6.00		\$5.25	\$5.75		\$4.50	\$4.50	
75 <sup>th</sup>	\$6.00	\$6.00		\$4.25	\$5.00		\$4.00	\$4.00	
60 <sup>th</sup>	\$5.50	\$5.50		\$4.00	\$4.00		\$4.00	\$4.00	
50 <sup>th</sup>	\$5.00	\$5.00		\$4.00	\$4.00		\$3.73	\$3.75	
25 <sup>th</sup>	\$4.00	\$4.00		\$3.50	\$4.00		\$3.38	\$3.25	
10 <sup>th</sup>	\$3.50	\$3.50		\$3.00	\$3.00		\$3.00	\$3.00	
<b>Monthly</b>	N=341	N=2609	\$1,000	N=153	N=1013	\$650	N=30	N=190	\$650
90 <sup>th</sup>	\$1,250	\$1,275		\$800	\$850		\$653	\$650	
75 <sup>th</sup>	\$1,100	\$1,100		\$700	\$700		\$650	\$650	
60 <sup>th</sup>	\$1,000	\$1,000		\$650	\$650		\$650	\$650	
50 <sup>th</sup>	\$1,000	\$1,000		\$650	\$650		\$650	\$650	
25 <sup>th</sup>	\$850	\$855		\$550	\$550		\$600	\$600	
10 <sup>th</sup>	\$700	\$730		\$520	\$525		\$525	\$550	

Continued on next page



Table 3. 2020 Prices by 2020 Rate Areas for Large Home-based Care

Rate Area A			Rate Area B			Rate Area C			
Facilities	Slots	Licensed Rate Maximums	Facilities	Slots	Licensed Rate Maximums	Facilities	Slots	Licensed Rate Maximums	
<b>SCHOOL AGE SCHOOL YEAR</b>									
<b>Hourly</b>	N=43	N=133	\$4.70	N=29	N=101	\$3.80	N=9	N=28	\$3.80
90 <sup>th</sup>	\$6.00	\$7.00		\$5.75	\$5.50		\$5.00	\$5.00	
75 <sup>th</sup>	\$6.00	\$6.00		\$4.50	\$4.25		\$4.00	\$4.50	
60 <sup>th</sup>	\$5.25	\$5.00		\$4.00	\$4.00		\$4.00	\$4.00	
50 <sup>th</sup>	\$5.00	\$4.50		\$4.00	\$4.00		\$4.00	\$4.00	
25 <sup>th</sup>	\$4.00	\$4.00		\$3.50	\$3.50		\$3.50	\$3.50	
10 <sup>th</sup>	\$3.50	\$3.25		\$3.00	\$3.00		\$3.00	\$3.00	
<b>Monthly</b>	N=138	N=406	\$750	N=93	N=332	\$600	N=17	N=49	\$600
90 <sup>th</sup>	\$1,000	\$1,000		\$700	\$695		\$650	\$600	
75 <sup>th</sup>	\$800	\$850		\$600	\$600		\$600	\$600	
60 <sup>th</sup>	\$750	\$750		\$550	\$550		\$600	\$600	
50 <sup>th</sup>	\$750	\$750		\$550	\$550		\$600	\$600	
25 <sup>th</sup>	\$600	\$600		\$400	\$400		\$560	\$550	
10 <sup>th</sup>	\$500	\$500		\$275	\$325		\$500	\$500	
<b>SCHOOL AGE SUMMER</b>									
<b>Hourly</b>	N=31	N=103	\$4.70	N=21	N=80	\$3.80	1N=0	N=33	\$3.80
90 <sup>th</sup>	\$6.00	\$6.00		\$5.50	\$5.75		\$4.75	\$5.00	
75 <sup>th</sup>	\$6.00	\$6.00		\$4.50	\$5.00		\$4.00	\$4.00	
60 <sup>th</sup>	\$5.50	\$5.00		\$4.00	\$4.00		\$4.00	\$4.00	
50 <sup>th</sup>	\$5.00	\$4.69		\$4.00	\$4.00		\$3.75	\$3.50	
25 <sup>th</sup>	\$4.00	\$4.00		\$3.75	\$3.88		\$3.50	\$3.50	
10 <sup>th</sup>	\$3.50	\$3.50		\$3.00	\$2.75		\$3.13	\$3.00	

Continued on next page

Table 3. 2020 Prices by 2020 Rate Areas for Large Home-based Care

	Rate Area A			Rate Area B			Rate Area C		
	Facilities	Slots	Licensed Rate Maximums	Facilities	Slots	Licensed Rate Maximums	Facilities	Slots	Licensed Rate Maximums
<b>SCHOOL AGE SUMMER (continued)</b>									
<b>Monthly</b>	N=102	N=318	\$750	N=80	N=268	\$600	N=16	N=54	\$600
90 <sup>th</sup>	\$1,000	\$1,000		\$750	\$750		\$695	\$695	
75 <sup>th</sup>	\$860	\$855		\$685	\$650		\$625	\$600	
60 <sup>th</sup>	\$750	\$750		\$650	\$600		\$600	\$600	
50 <sup>th</sup>	\$750	\$750		\$600	\$600		\$600	\$560	
25 <sup>th</sup>	\$650	\$650		\$550	\$525		\$505	\$500	
10 <sup>th</sup>	\$550	\$550		\$463	\$450		\$475	\$275	

**Table 4. 2020 Rate Areas By Zip Code, Sorted By County**

County	City	Zip Code	Rate Area						
			2008	2010	2012	2014	2016	2018	2020
Baker	Baker	97814	C	C	C	C	C	C	C
Benton	Alpine	97408	A	A	A	A	A	A	A
Benton	Corvallis NW	97330	A	A	A	A	A	A	A
Benton	Corvallis OSU	97331	A	A	A	A	A	A	A
Benton	Corvallis SW	97333	A	A	A	A	A	A	A
Benton	Monroe	97456	B	B	B	B	B	B	B
Benton	Philomath	97370	B	B	B	B	B	B	B
Clackamas	Barlow	97003	B	B	B	B	B	B	A
Clackamas	Canby	97013	A	A	A	A	A	A	A
Clackamas	Clackamas	97015	A	A	A	A	A	A	A
Clackamas	Damascus	97089	A	A	A	A	A	A	A
Clackamas	Estacada	97023	A	A	A	A	A	A	A
Clackamas	Gladstone	97027	A	A	A	A	A	A	A
Clackamas	Happy Valley	97086	A	A	A	A	A	A	A
Clackamas	Lake Oswego	97034	A	A	A	A	A	A	A
Clackamas	Lake Oswego	97035	A	A	A	A	A	A	A
Clackamas	Milwaukie	97222	A	A	A	A	A	A	A
Clackamas	Milwaukie	97267	A	A	A	A	A	A	A
Clackamas	Molalla	97038	B	B	B	B	B	B	B
Clackamas	Oregon City	97045	A	A	A	A	A	A	A
Clackamas	Sandy	97055	A	A	A	A	A	A	A
Clackamas	West Linn	97068	A	A	A	A	A	A	A
Clackamas	Wilsonville	97070	A	A	A	A	A	A	A
Clatsop	Astoria	97103	B	B	B	B	B	B	B
Clatsop	Seaside	97138	B	B	B	B	B	B	B
Clatsop	Warrenton	97146	B	B	B	B	B	B	B
Columbia	Scappoose	97056	B	A	A	A	A	A	A
Columbia	St. Helens	97051	B	A	A	A	A	A	A
Columbia	Vernonia	97064	A	A	A	A	A	A	A
Coos	Bandon	97411	C	C	C	C	C	C	C
Coos	Coos Bay	97420	B	B	B	B	B	B	B
Coos	Coquille	97423	B	B	B	B	B	B	B
Coos	Myrtle Point	97458	C	C	C	C	C	C	C
Coos	North Bend	97459	C	B	B	B	B	B	B
Crook	Prineville	97754	C	C	C	C	C	C	C
Curry	Brookings	97415	B	B	B	B	B	B	B
Curry	Gold Beach	97444	B	B	B	B	B	B	B
Deschutes	Bend	97701	A	A	A	A	A	A	A
Deschutes	Bend	97702	A	A	A	A	A	A	A

*Continued on next page*

Table 4. 2020 Rate Areas by Zip Code, Sorted by County

County	City	Zip Code	Rate Area						
			2008	2010	2012	2014	2016	2018	2020
Deschutes	Bend	97703	.	.	.	.	.	A	A
Deschutes	La Pine	97739	C	C	C	C	C	C	C
Deschutes	Redmond	97756	B	B	B	B	B	B	B
Deschutes	Redmond	97760	B	B	B	B	B	B	B
Deschutes	Sisters	97759	B	B	B	B	B	B	B
Deschutes	Sun River	97707	A	A	A	A	A	A	A
Douglas	Drain	97435	C	C	C	C	C	C	C
Douglas	Myrtle Creek	97457	C	B	B	B	B	B	B
Douglas	Reedsport	97467	C	C	C	C	C	C	C
Douglas	Riddle	97469	C	C	C	C	C	C	C
Douglas	Roseburg	97470	B	B	B	B	B	B	B
Douglas	Roseburg	97471	.	B	B	B	B	B	B
Douglas	Sutherlin	97479	C	C	B	B	B	B	B
Douglas	Winston	97496	C	C	C	C	C	C	C
Douglas	Yoncalla	97499	C	C	C	C	C	C	C
Gilliam	Arlington	97812	B	B	B	B	B	B	B
Gilliam	Condon	97823	C	C	C	C	C	C	C
Harney	Burns	97720	C	C	C	C	C	C	C
Harney	Hines	97738	C	C	C	C	C	C	C
Hood River	Cascade Locks	97014	A	A	A	A	A	A	A
Hood River	Hood River	97031	A	A	A	A	A	A	A
Hood River	Mount Hood	97041	A	A	A	A	A	A	A
Jackson	Ashland	97520	A	A	A	A	A	A	A
Jackson	Central Point	97502	B	B	B	B	B	B	B
Jackson	Eagle Point	97524	B	B	B	B	B	B	B
Jackson	Medford	97501	B	B	B	B	B	B	B
Jackson	Medford	97504	B	B	B	B	B	B	B
Jackson	Phoenix	97535	B	B	B	B	B	B	B
Jackson	Rogue River	97537	C	C	C	C	C	C	C
Jackson	Shady Cove	97539	C	C	C	C	C	C	C
Jackson	Talent	97540	C	C	C	C	C	C	C
Jackson	Trail	97541	C	C	C	C	C	C	C
Jackson	White City	97503	B	B	B	B	B	B	B
Jefferson	Culver	97734	C	C	C	C	C	C	C
Jefferson	Madras	97741	C	C	C	C	C	C	C
Jefferson	Warm Springs	97761	C	C	C	C	C	C	C
Josephine	Grants Pass	97526	C	C	C	C	C	C	C
Josephine	Grants Pass	97527	C	C	C	C	C	C	C
Josephine	Sunny Valley	97478	B	B	B	B	B	B	A
Klamath	Klamath Falls	97601	C	C	C	C	C	C	C
Klamath	Lake of Woods	97603	C	C	C	C		C	C

Continued on next page

Table 4. 2020 Rate Areas by Zip Code, Sorted by County

County	City	Zip Code	Rate Area						
			2008	2010	2012	2014	2016	2018	2020
Lake	Christmas Valley	97641	C	C	C	C	C	C	C
Lane	Cottage Grove	97424	B	B	B	B	B	B	B
Lane	Creswell	97426	B	B	B	B	B	B	B
Lane	Dexter	97431	B	B	B	B	B	B	B
Lane	Elmira	97437	C	C	C	C	C	C	C
Lane	Eugene	97401	A	A	A	A	A	A	A
Lane	Eugene	97402	A	A	A	A	A	A	A
Lane	Eugene	97403	A	A	A	A	A	A	A
Lane	Eugene	97404	A	A	A	A	A	A	A
Lane	Eugene	97405	A	A	A	A	A	A	A
Lane	Florence	97439	C	C	C	C	C	C	C
Lane	Junction City	97448	B	B	B	B	B	B	B
Lane	Marcola	97454	A	A	A	A	A	A	A
Lane	Pleasant Hill	97455	A	A	A	A	A	A	A
Lane	Springfield	97477	A	A	A	A	A	A	A
Lane	Veneta	97487	B	B	B	B	B	B	B
Lincoln	Lincoln City	97367	B	B	B	B	B	B	B
Lincoln	Newport	97365	B	B	B	B	B	B	B
Lincoln	Otis	97368	C	C	C	C	C	C	C
Lincoln	Seal Rock	97376	A	A	A	A	A	A	A
Lincoln	Toledo	97391	B	B	B	B	B	B	B
Lincoln	Waldport	97394	C	B	B	B	B	B	B
Linn	Albany	97321	B	B	B	B	B	B	B
Linn	Albany	97322	B	B	B	B	B	B	B
Linn	Brownsville	97327	B	B	B	B	B	B	B
Linn	Halsey	97348	B	B	B	B	B	B	B
Linn	Harrisburg	97446	B	B	B	B	B	B	B
Linn	Lebanon	97355	B	B	B	B	B	B	B
Linn	Sweet Home	97386	B	B	B	B	B	B	B
Linn	Tangent	97389	B	B	B	B	B	B	B
Malheur	Nyssa	97913	C	C	C	C	C	C	C
Malheur	Ontario	97914	C	C	C	C	C	C	C
Malheur	Vale	97918	C	C	C	C	C	C	C
Marion	Aumsville	97325	C	C	C	C	C	C	B
Marion	Gervais	97026	C	C	C	C	C	C	C
Marion	Hubbard	97032	C	C	C	C	C	C	C
Marion	Jefferson	97352	B	B	B	B	B	B	B
Marion	Mt. Angel	97362	B	B	B	B	B	B	B
Marion	Salem	97305	B	B	B	B	B	B	B
Marion	Salem	97306	B	B	B	B	B	B	B
Marion	Salem	97317	B	B	B	B	B	B	B

Continued on next page

Table 4. 2020 Rate Areas by Zip Code, Sorted by County

County	City	Zip Code	Rate Area						
			2008	2010	2012	2014	2016	2018	2020
Marion	Salem NE	97301	B	B	B	B	B	B	B
Marion	Salem NE	97303	B	B	B	B	B	B	B
Marion	Salem Rt 3, 4	97302	B	B	B	B	B	B	B
Marion	Salem West	97304	B	B	B	B	B	B	B
Marion	Silverton	97381	B	B	B	B	B	B	B
Marion	Stayton	97383	B	B	B	B	B	B	B
Marion	Sublimity	97385	C	C	C	C	C	C	B
Marion	Turner	97392	B	B	B	B	B	B	B
Marion	Woodburn	97071	B	B	B	B	B	B	B
Multnomah	Corbett	97019	A	A	A	A	A	A	A
Multnomah	Gresham	97030	A	A	A	A	A	A	A
Multnomah	Gresham	97080	A	A	A	A	A	A	A
Multnomah	Portland	97201	A	A	A	A	A	A	A
Multnomah	Portland	97202	A	A	A	A	A	A	A
Multnomah	Portland	97203	A	A	A	A	A	A	A
Multnomah	Portland	97204	A	A	A	A	A	A	A
Multnomah	Portland	97205	A	A	A	A	A	A	A
Multnomah	Portland	97206	A	A	A	A	A	A	A
Multnomah	Portland	97209	A	A	A	A	A	A	A
Multnomah	Portland	97210	A	A	A	A	A	A	A
Multnomah	Portland	97211	A	A	A	A	A	A	A
Multnomah	Portland	97212	A	A	A	A	A	A	A
Multnomah	Portland	97213	A	A	A	A	A	A	A
Multnomah	Portland	97214	A	A	A	A	A	A	A
Multnomah	Portland	97215	A	A	A	A	A	A	A
Multnomah	Portland	97216	A	A	A	A	A	A	A
Multnomah	Portland	97217	A	A	A	A	A	A	A
Multnomah	Portland	97218	A	A	A	A	A	A	A
Multnomah	Portland	97219	A	A	A	A	A	A	A
Multnomah	Portland	97220	A	A	A	A	A	A	A
Multnomah	Portland	97221	A	A	A	A	A	A	A
Multnomah	Portland	97225	A	A	A	A	A	A	A
Multnomah	Portland	97227	A	A	A	A	A	A	A
Multnomah	Portland	97229	A	A	A	A	A	A	A
Multnomah	Portland	97230	A	A	A	A	A	A	A
Multnomah	Portland	97232	A	A	A	A	A	A	A
Multnomah	Portland	97233	A	A	A	A	A	A	A
Multnomah	Portland	97236	A	A	A	A	A	A	A
Multnomah	Portland	97239	A	A	A	A	A	A	A
Multnomah	Portland	97266	A	A	A	A	A	A	A
Multnomah	Troutdale	97060	A	A	A	A	A	A	A

Continued on next page

Table 4. 2020 Rate Areas by Zip Code, Sorted by County

County	City	Zip Code	Rate Area						
			2008	2010	2012	2014	2016	2018	2020
Polk	Dallas	97338	B	B	B	B	B	B	B
Polk	Independence	97351	A	A	A	A	A	A	A
Polk	Monmouth	97361	A	A	A	A	A	A	A
Sherman	Wasco	97065	C	C	C	C	C	C	C
Tillamook	Cloverdale	97112	A	A	A	A	A	A	A
Tillamook	Garibaldi	97118	B	B	B	B	B	B	B
Tillamook	Tillamook	97141	B	B	B	B	B	B	B
Umatilla	Hermiston	97838	C	C	C	C	C	C	C
Umatilla	Milton Frwtr	97862	C	C	C	C	C	C	C
Umatilla	Pendleton	97801	B	B	B	B	B	B	B
Umatilla	Stanfield	97875	C	C	C	C	C	C	C
Umatilla	Umatilla	97882	C	C	C	C	C	C	C
Umatilla	Weston	97886	C	C	C	C	C	C	C
Union	Cove	97824	C	C	C	C	C	C	C
Union	Elgin	97827	C	C	C	C	C	C	C
Union	LaGrande	97850	C	C	C	C	C	C	C
Union	North Powder	97867	C	C	C	C	C	C	C
Union	Union	97833	C	C	C	C	C	C	C
Union	Union	97883	C	C	C	C	C	C	C
Wallowa	Enterprise	97828	C	C	C	C	C	C	C
Wallowa	Lostine	97857	C	C	C	C	C	C	C
Wallowa	Wallowa	97885	C	C	C	C	C	C	C
Wasco	Dufur	97021	C	C	C	C	C	C	C
Wasco	The Dalles	97058	B	B	B	B	B	B	B
Washington	Banks	97106	A	A	A	A	A	A	A
Washington	Beaverton	97005	A	A	A	A	A	A	A
Washington	Beaverton	97006	A	A	A	A	A	A	A
Washington	Beaverton	97007	A	A	A	A	A	A	A
Washington	Beaverton	97008	A	A	A	A	A	A	A
Washington	Beaverton	97078	.	.	.	.	A	A	A
Washington	Beaverton	97123	A	A	A	A	A	A	A
Washington	Cornelius	97113	A	A	A	A	A	A	A
Washington	Forest Grove	97116	A	A	A	A	A	A	A
Washington	Hillsboro	97124	A	A	A	A	A	A	A
Washington	North Plains	97133	A	A	A	A	A	A	A
Washington	Sherwood	97140	A	A	A	A	A	A	A
Washington	Tigard	97223	A	A	A	A	A	A	A
Washington	Tigard	97224	A	A	A	A	A	A	A
Washington	Tualatin	97062	A	A	A	A	A	A	A
Wheeler	Fossil	97830	C	C	C	C	C	C	C
Yamhill	Carlton	97111	B	B	B	B	B	B	B

Continued on next page

Table 4. 2020 Rate Areas by Zip Code, Sorted by County

County	City	Zip Code	Rate Area						
			2008	2010	2012	2014	2016	2018	2020
Yamhill	Dayton	97114	B	B	B	B	B	B	B
Yamhill	Lafayette	97127	B	B	B	B	B	B	B
Yamhill	McMinnville	97128	B	B	B	B	B	B	B
Yamhill	Newberg	97132	A	A	A	A	A	A	A
Yamhill	Sheridan	97378	B	B	B	B	B	B	B
Yamhill	Willamina	97396	C	C	C	C	C	C	C