

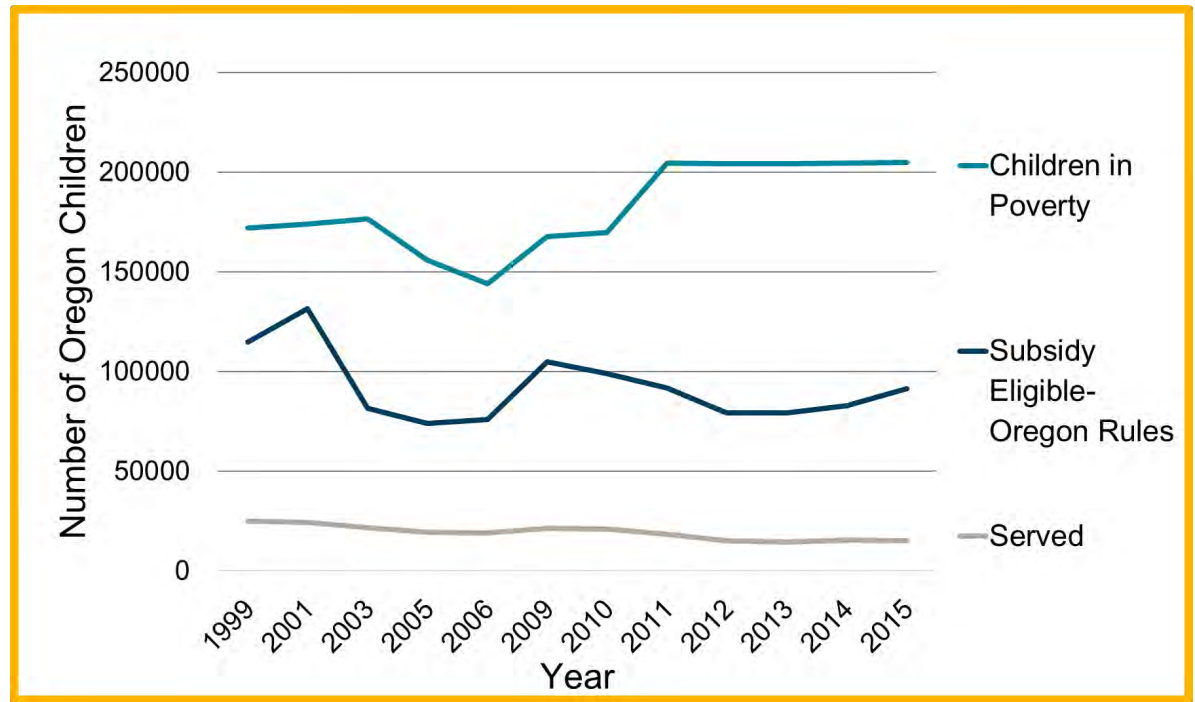
# OREGON CHILD CARE SUBSIDY

## ELIGIBILITY ESTIMATES

Produced by the Oregon Child Care Research Partnership, 2018

	1999	2001	2003	2005	2006	2009	2010	2011	2012	2013	2014	2015
Number eligible by Federal Rules					138,290	153,588	150,954	143,814	137,302	140,651	137,958	136,729
Number Eligible by Oregon Rules	114,600	131,425	81,600	73,933	75,940	104,734	98,789	91,780	79,285	79,189	82,903	91,539
Number Served [2yr average]	24,881	24,325	21,699	19,477	18,999	21,410	20,901	18,488	15,046	14,291	15,314	15,127
<b>% Served</b>	<b>22%</b>	<b>19%</b>	<b>27%</b>	<b>26%</b>	<b>25%</b>	<b>20%</b>	<b>21%</b>	<b>20%</b>	<b>19%</b>	<b>18%</b>	<b>18%</b>	<b>17%</b>

*Percentage of eligible children served is measured by dividing the number of Oregon children eligible for subsidy using Oregon CCDF Rules by numbers of children served from the 801 Report.*



For more information please contact:

Dr. Megan Pratt , Hallie E. Ford Center for Healthy Children & Families, Oregon State University , [megan.pratt@oregonstate.edu](mailto:megan.pratt@oregonstate.edu)

