
2024 Oregon Child Care Market Price Study

Prepared for the **Oregon Department of
Early Learning and Care**

*Megan Pratt
Michaella Sektnan*

Acknowledgments

The 2024 Child Care Market Price Study is built upon the methods, analysis, and writing of Deana Grobe and Bobbie Weber, who conducted and wrote fourteen Oregon’s Market Price Studies between 1990-2018. Much of their writing is included in this report and we appreciate their guidance and support throughout the process.

This report has benefited greatly from the guidance and commitment of the advisory committee, comprised of Anneliese Sheahan, Oregon AFSCME; Barbara Lynch and Stephanie Davidson, Child Care Resource & Referral; Delina Biniam, Marchel Marcos, and Regan Gray, Family Forward; Allison Delorey, Elizabeth Wavra, Elizabeth Tremaine, Jennifer Heras, JoAnn Lindorfer, Jordan Pargeter, Lindsay Ollerenshaw, and Norma Alba-Stanislawski, Oregon Department of Early Learning and Care; Elena Barreto, Children’s Institute; Mitchell Bradner and Valeria Anderson, Western Oregon University Central Coordination; Ricardo Varela and Vanessa Herriott, SEIU. We gratefully acknowledge the members of this committee.

Finally, we are grateful to the local Child Care Resource and Referrals and Central Coordination team at The Research Institute at Western Oregon University for the quality of their work in collecting price and capacity data.

Contents

Executive Summary.....	4
Introduction	7
Data.....	9
DATA SELECTION	9
DATA VALIDITY	11
Methodological Issues	13
DEFINING THE MARKET PRICE SAMPLE.....	13
OTHER DATA CONSIDERATIONS.....	15
PRICE MODE	16
PRICE PER CHILD CARE SLOTS.....	17
Findings	20
STATEWIDE CHILD CARE PRICES.....	20
CHANGES IN CHILD CARE PRICES OVER TIME	21
GEOGRAPHIC PRICE CLUSTERS.....	30
Conclusions	40
References	42
Appendix A.....	45
Glossary	45
Appendix B.....	46
Table B1. 2024 Statewide Prices for Small Home-Based Care	46
Table B2. 2024 Statewide Prices for Center Care.....	47
Table B3. 2024 Statewide Prices for Large Home-Based Care	48
Appendix C.....	49
Table C1. 2024 Median Monthly Prices by County and Age Group for Small Home-Based Care	49
Table C2. 2024 Median Monthly Prices by County and Age Group for Center Care	52
Table C3. 2024 Median Monthly Prices by County and Age Group for Large Home-Based Care	55
Appendix D.....	58
Table D1. Full-Time Prices at the 50th, 75th, and 90th Percentile for Small Home-Based Child Care Slots	58
Table D2. Full-Time Prices at the 50th, 75th, and 90th Percentile for Center Child Care Slots	61
Table D3. Full-Time Prices at the 50th, 75th, and 90th Percentile for Large Home-Based Child Care Slots	63
Appendix E	65
Table E1. 2024 Cluster and Statewide Prices for Small Home-Based Child Care Slots	65
Table E2. 2024 Cluster and Statewide Prices for Center Child Care Slots.....	67
Table E3. 2024 Cluster and Statewide Prices for Large Home-Based Child Care Slots	68
Appendix F	69
Table F1. 2024 Clusters for Zip Codes by County	69
Appendix G.....	82
Map 1. 2024 Geographic Clusters of Child Care Prices for Small Home-Based Care	82
Map 2. 2024 Geographic Clusters of Child Care Prices for Center and Large Home-Based Care	83

2024 Oregon Child Care Market Price Study

EXECUTIVE SUMMARY

Purpose and Rational

The purpose of the 2024 Oregon Market Price Studyⁱ is to examine statewide and geographic patterns in the prices charged by facilities by age of child served, type of care, and pricing modes (hourly, monthly, daily, weekly). The market price survey is a tool used by states to collect up-to-date information on what facilities, within given geographic areas, charge parents for various types of child care. This information is then considered during the state budget process when establishing state subsidy rate policies for providers who serve Child Care and Development Fund (CCDF) eligible families.

The Market Price Study fulfills the Child Care and Development Fund (CCDF) federal funding requirement stipulating that child care subsidy rates be informed by market rates. The 2014 Reauthorization of the Child Care and Development Block Grant Act (CCDGB) Act broadened the purpose of the market rate studies to also address concerns around the costs to provide such care, which often exceeds the prices charged to parents. The State of Oregon is working toward addressing the cost of providing child care in the CCDF planning process in the future. Consistent with past Market Price Study Reports, this 2024 Report continues to be focused on how the market operates as indicated by the price of child care charged by facilities.

Prices are what providers charge families and are distinct from other financial aspects of running a child care business. Prices are not the same as program revenue or income, nor are prices the same as the costs or expenses involved in running a child care program. This report is focused on the prices families encounter when looking to purchase child care from the priced market.

High-Level Findings

Below we summarize high-level findings from the Market Price Study Report, including (a) 2024ⁱⁱ child care prices by type of care and ages served, (b) changes in statewide prices over time, and (c) geographic price clusters by type of care. References to where to find more information in the main report on each topic are provided throughout.

2024 Child Care Prices Vary by Type of Care and Ages Served

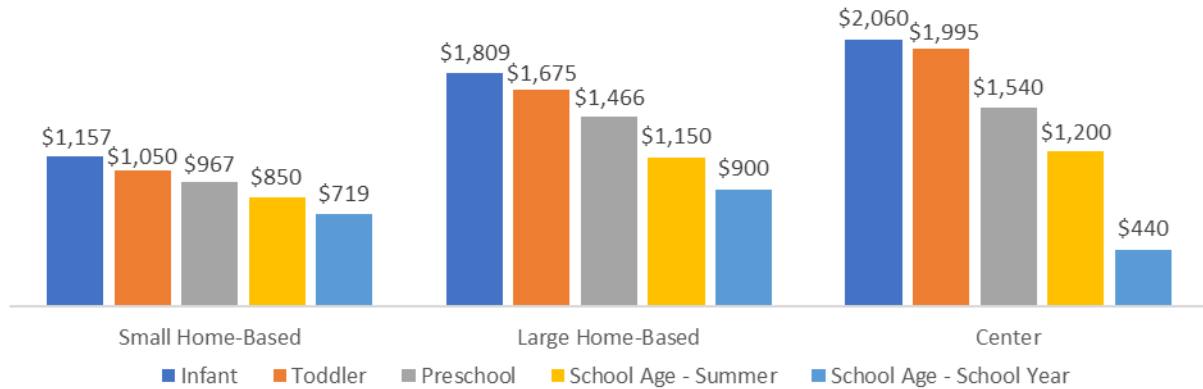
Overall, prices are lower for small home-based child care than for centers and large home-based care regardless of age of child served or pricing mode. Large home-based care prices are closer to center prices than small home-based prices. Additionally, within each type of care, toddler prices are lower than infant prices and higher than preschool prices (see figure below).

See pages 20 for full 2024 statewide child care prices results.

ⁱ Although these surveys are described as market rate surveys by the federal government, we use the term market price survey because the title clearly distinguishes the process of collecting price data from setting maximum payment rates, which is done by the state.

ⁱⁱ Prices current as of December 2024.

**2024 Statewide Full-Time, Monthly Prices at the 75th Percentile
for Child Care Slots by Type of Care**



Statewide Prices Continue to Increase Over Time

Between 2022 and 2024, monthly prices increased across all care types. Center facilities saw largest prices increase (+11% for infants, toddlers, and preschoolers), followed by large home (+10% for infants, +7% for toddlers, and +15% for preschool age groups), and then small home-based (+7% for infants, +9% for toddlers, and +7% for preschool age groups). The rate of inflation from 2022 to 2024 was 7%. After adjusting prices for inflation, the price of care in center-based care and large home-based preschool care just outpaced inflation, while the price of care in small home-based facilities and large home-based infant and toddler care generally kept up with inflation.

Statewide trends over the past 24 years show prices have consistently increased across all care types. After adjusting for inflation, over the last 24 years, center prices have increased the most compared to home-based care types (+75% for infants and +71% for both toddlers and preschoolers). Home-based care saw similar inflation-adjusted increases across age groups, with 47-53% increase in prices for large home-based and 33-51% increase in prices for small home-based, depending on age group and pricing mode.

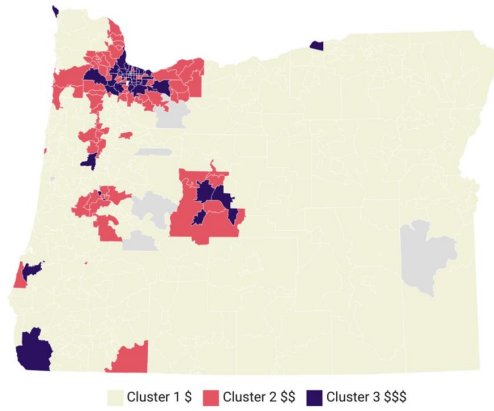
See pages 21 in main report for full price changes over time results.

Geographic Price Cluster Analyses identified Distinct Child Care Markets across Oregon Zip Codes

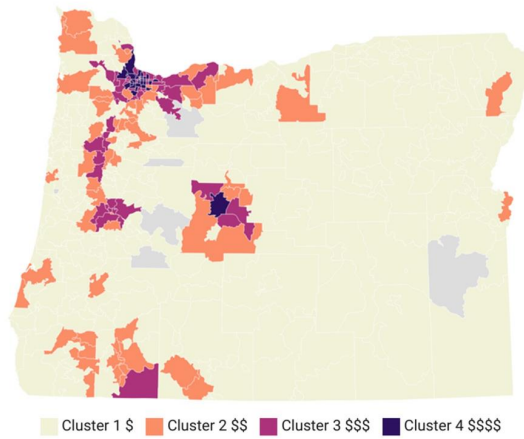
Consistent with past years, child care prices were best defined by four clusters for center care and large home-based care and three clusters were identified for small home-based care. The greatest differences in prices by geographic clusters were found for center care and large home-based care, especially for infant and toddler prices. Although some variation exists, most of the zip codes in the higher priced clusters were in urban designated zip codes, while those in lowest priced clusters were in rural zip codes.

2024 Geographic Clusters of Monthly Child Care Prices by Type of Care

Small Home-Based Care



Center and Large Home-Based Care



See pages 30 in main report for full geographic price clusters result findings.

INTRODUCTION

Starting with the Family Support Act of 1988, federal funding requirements have stipulated that child care subsidy rates be informed by market rates.ⁱⁱⁱ In 1990, the federal government began a major investment in child care with the passage of the Child Care and Development Block Grant Act of 1990 (42 U.S.C. 9858 et seq; CCDBG). Support of parental choice was a key component of this block grant program that sent new money to states to support child care. Parental choice and state control of policy remained central when the program was expanded in 1996 as a part of welfare reform legislation. At that time, child care funding became known as the Child Care and Development Fund (CCDF). CCDF operates as a block grant to States, Tribes, and Territories. Working within federal rules, states control the major policy levers for CCDF, whose funding involves a mix of federal and state dollars.

The 2014 Reauthorization of CCDBG Act broadened the purpose of market rate studies to include concerns that providers have sufficient funding to provide quality care. It also introduced attention to issues of costs to provide such care. The goal of parental access continues alongside the additional attention determining the cost of providing quality care. As part of this Act, states are required to conduct a child care market rate survey no earlier than two years before the submission of their CCDF Plan. The federal requirements for a market rate survey study aims to support states in their efforts to establish maximum child care payment rates that are high enough to enable subsidy-participating families to enter the child care market in a competitive position to find and afford care. Another goal is to enable providers to provide high quality care.

A market price study is a tool used by states to collect up-to-date information on what facilities, within given geographic areas, charge parents for various types of child care. This information is then considered during the state budget process when establishing state subsidy rate policies for providers who serve CCDF-eligible families in Oregon. Although these studies are described as market rate surveys by the federal government, we use the term market price survey or study because the title clearly distinguishes the process of collecting price data from setting maximum payment rates, which is done by the state.

Up until the 2014 Act, states were directed to study prices rather than costs. Prices are the rates that providers charge families and are distinct from other financial aspects of running a child care business, such as program revenue and income or the costs and expenses involved in running a child care program. The cost a facility incurs to provide child care is often greater than the price charged to parents. States are now free to explore ways to study costs. Oregon has started work in this area that will complement the market price study efforts in the future.

In Oregon, the Department of Early Learning and Care (DELIC) administers the subsidy program, oversees the market price study, and recommends a budget for establishing subsidy policies. Prior to 2023, Oregon's Early Learning Division^{iv} partnered with Oregon Department of Human Services (ODHS) to administer the subsidy program. As authorized by the 2007 Oregon Legislature, ODHS implemented a significant policy change by increasing maximum subsidy rates to the 75th percentile of 2006 prices for

ⁱⁱⁱ Throughout this report, the term *market prices* or *price* is used to describe *prices* that are set in the open market by child care facilities. This is distinguished from the *rate of payment* or *maximum reimbursement rate* established by Oregon Department of Human Services for reimbursing child care facilities participating in the subsidy program. For a glossary of terms used in this report, see [Appendix A](#).

^{iv} On July 1, 2023, Oregon's Early Learning Division (ELD) became the Department of Early Learning and Care (DELIC), a new state agency consolidating child care programs and early care and education programs, including the Employment Related Day Care program, to better support families, children, and providers.

most licensed facilities and authorized a copay reduction of 24% for parents. This policy change went into effect in October of 2007. Effective October 2013, ODHS increased maximum subsidy rates to the 75th percentile of the 2012 Child Care Market Price Study for registered and certified family child care providers. In March of 2016, the maximum subsidy rates for all licensed providers were increased up to or beyond the 2014 Market Price Study. Increases in maximum subsidy rates for exempt providers were implemented in October 2017, and small and large home-based providers received an increase in subsidy rates as of January 2018. Rates for all providers were again increased in January 2019, June 2022^v, and January 2024^{vi}. In addition, starting in 2020, Rate Area C facilities are reimbursed using the Rate Area B maximum subsidy reimbursement rate. For more information on the history of the child care subsidy program, see the Oregon Case Study Report^{vii}.

Past Oregon Market Price Studies have been conducted in 1990, 1992, 1994, 1999, 2000, 2002, 2004, 2006, 2008, 2010, 2012, 2014, 2016, 2018, 2020, and 2022 furthering our knowledge of how the child care market operates.^{viii} The objectives of the year 2024 market price study were to: (a) identify current prices charged for child care (i.e., current market prices), and (b) identify the geographic distribution of current child care market prices across the state. An advisory committee was formed to oversee and review the findings of the study. This report further details the data and methodology, reports on the 2024 market price analysis, and identifies geographic price areas. An additional Rate Area Findings Report (previously known as the Supplemental Report) provides a comparison of the Employment Related Day Care (ERDC) subsidy rate maximums to Market Price Study statewide results. All 2024 Market Price Study documents can be found at health.oregonstate.edu/early-learners/research/oregon-child-care-market-price-study-2024.

^v In June 2022, the reimbursement rates were raised toward alignment with the 90th percentile prices as estimated in the 2020 Market Price Study.

^{vi} In January 2024, the reimbursement rates were set based on an approximation of the 80th percentile of the 2022 Market Price Study.

^{vii} Ref. 1 or health.oregonstate.edu/early-learners/research/child-care-subsidy-oregon-case-study

^{viii} See Ref. 2-17 for past studies or visit health.oregonstate.edu/early-learners/research/child-care-prices

DATA

DATA SELECTION

Study Population

The population of interest is the priced child care market in Oregon. Facilities within the priced child care market have two characteristics:

- (1) they charge parents a price,
- (2) the price is established through an arm's length transaction.

In an arm's length transaction, the buyer and seller do not have a prior relationship or shared membership that is likely to affect the price charged.^{ix} The priced market does not include facilities who limit their care to persons they know, as is commonly the case with family, friend, and neighbor caregivers.

Three major types of child care are included in the market price study: small home-based care, large home-based care, and centers.^x Small home-based facilities offer care to a small group of children in the caregiver's own home. Large home-based facilities provide care to a larger group of children, typically in a family home. In Oregon, large-based facilities must be certified under Oregon State Law and are required to meet certain standards not required of a registered family child care facility. Child care centers operate in a non-residential facility and must be certified by the Child Care Licensing Division, Department of Early Learning and Care, unless they meet exemption criteria.

Data Source

The study universe includes all child care facilities in the priced child care market. The majority of family, friend, and neighbor caregivers have a prior relationship with the parent; thus, if they do charge a price it is not established at arm's length. The price is likely to be influenced by the prior relationship. The vast majority of family, friends, and neighbors are not part of the priced child care market.

The Child Care Resource and Referral (CCR&R) database, Find Child Care Oregon (FCCO)^{xi}, remains Oregon's most comprehensive and reliable data source for market prices. The statewide CCR&R database of child care facilities is an aggregate of data from 15 local CCR&R agencies representing all counties in Oregon. CCR&Rs are regional entities funded by the Department of Early Learning and Care to recruit and retain child care businesses, both home and center-based, and to help build the supply of high-quality child care across Oregon. Each CCR&R is contracted to provide services in one of 15 regions. Most agencies are housed within a larger parent agency, such as a community action program or a community college. All Oregon CCR&Rs are members of Central Coordination of the Oregon Child Care Resource & Referral, which provides statewide leadership and collaboration through responsive technical assistance.

^{ix} Grobe, et al.: 2008 (ref. 18).

^x Home-based child care providers are typically identified by their regulatory status: a) small home-based providers are known as registered family child care, and b) large home-based providers are known as certified family child care. This report also includes a small number of license-exempt home-based providers who accept referrals from their local CCR&R and license-exempt centers that reported full time prices charged to families, see Methodological Issues section for more information on exempt facilities. We use the terms small and large home-based care throughout this report.

^{xi} In late 2020, the database system used by the Child Care Resource and Referral system changed from NACCRRAware to Find Child Care Oregon (FCCO).

Given that almost all centers and small and large home-based care are captured in FCCO Child Care Resource and Referral (CCR&R) database, this database was used for the 2024 Market Price Study. The Department of Early Learning and Care’s Child Care Licensing Division’s licensing database was not considered because it is not designed to capture facility price data, although it was merged with the CCR&R database prior to data collection and during analysis to ensure that all facilities were included.

Most facilities in the CCR&R database offer care in the priced child care market. The CCR&R database was also used in the 1992, 1994, 2000, 2002, 2004, 2006, 2008, 2010, 2012, 2014, 2016, 2018, 2020, and 2022 Oregon market price studies and has proven to be a reasonable source of price data in most communities.^{xii} The sample of facilities contacted for the 1999 telephone survey was also drawn from the CCR&R database. CCR&R data include facility reports of their actual charges; thus, it can be assumed that these data accurately reflect prices for child care. Finally, in preparation for the download of data for the price survey, with support from Central Coordination, the local CCR&Rs email and call facilities to assure information on prices and other facility characteristics is current.

Each CCR&R uses the statewide Find Child Care Oregon (FCCO) database. This database allows CCR&R staff to collect and store information on facilities and match up parents seeking child care with complementary child care facilities. All facilities that are enrolled with a CCR&R are entered into the database. In addition, Central Coordination conducts regular merges of CCR&R and Licensing databases to ensure completeness of the CCR&R database. Information collected about facilities includes:

- Basic data such as name, address, telephone number.
- Type of care, days and hours of care, license and/or registration status.
- Numbers and age groups of children served.
- Care charges (prices) for ages served.

These data elements are entered into the database. There are periodic updates to the database throughout the year where the CCR&R staff reach out to providers to update their information. Additionally, providers have access to a Provider Portal to make updates and keep their information current.

For the market price survey, the CCR&Rs attempt to contact all facilities within a three-month period to collect current price and capacity data. Central Coordination facilitates this process and checks the data for accuracy, then provides one large database to Oregon State University research partners. From this database, various statistical reports can be drawn. Currently, this database provides data for various research needs including the Market Price Survey, the Oregon Child Care Research Partnership Estimating Supply study, and the Child Care Desert Report. It is also used in the Early Learning Map of Oregon (ELMO).

CCR&R 2024 Database Characteristics

In 2024, Central Coordination at Western Oregon University oversaw a data update process in which data on capacity and price by age group were collected from all active Oregon child care facilities within a three-month period (October - December) to ensure all data were comparable and current. Of relevance for these analyses, the dataset included data on each facility’s regulatory status, capacity, and price by age group as of December 2024. This included 4,898 facility records that were active as of December 2024. Of these 1,522 (31%) were small home-based child care facilities, 2,203 (45%) centers, and 1,173 (24%) were large home-based care facilities.

^{xii} References 2 through 16.

After facility records without price data and those that were not considered part of the child care market were eliminated, the final sample was 2,656 facilities including 1,001 (38%) small home-based care, 883 (33%) centers, and 772 (29%) large home-based care providers. (See [Methodological Issues](#) section for discussion of facility records that were included or excluded in the market price study data analysis).

DATA VALIDITY

Data are valid if they measure what they are intended to measure.^{xiii} Market price study findings are considered valid to the extent to that the facilities from which price data are collected represent all facilities with child care prices. Factors that affect the representativeness of market price study findings include: response rate, completeness of data, geographic representativeness, and currency of the data. On each of these validity indicators, the CCR&R 2024 database was assessed to be valid. Specifically:

- *Response Rate.* Of the total 4,898 facilities that were active as of December 2024, 4,356 (91%) met the definition of a priced child care market. Of those defined as market care, 3,295 (76%) provided full-time price data. Of those with full-time prices, 81% had useable prices that had been updated within a six-month period for a final sample size of 2,656 providers. This is a similar response rate to past years, and aligns with best practice recommendations.^{xiv}
- *Data Completeness.* Data were complete, with limited missing data for critical variables for facilities that met the definition of a priced child care market. For example, across the sample of market care facilities (4,356), price data were reported for 76% of the facilities. Approximately 24% had no price data, including facilities who do not directly charge consumers and thus have no prices to report (such as Head Start). Other facilities refuse to submit prices for a variety of reasons. Reasons for refusals include complicated, variable pricing structures or preferring to discuss prices directly with parents. See the Methodological Issues section for additional details.
- *Geographic Representativeness.* The CCR&R database included facility price information gathered across all 36 Oregon counties. The geographic detail and sample size are adequate to represent the population of Oregon facilities who offer care in the priced child care market.^{ix}
- *Data Currency.* Price and capacity data were updated by the state’s CCR&Rs from October – December 2024. Price data were based on the current prices that facilities offered in the marketplace at that current point in time. Of facilities with full-time price data, 79% met a standard of three-month currency and 81% met the standard of six-month currency that is used in this report.

The CCR&R database provides a comprehensive source of data relevant to policy decision-making. It also facilitates comparison of market prices over time. The CCR&R database provides a cost efficient source of price data that is large enough and comprehensive enough to reliably produce valid price estimates at both local and state levels. CCR&R data have been used in previous market price surveys both in Oregon and in other states. Consistency in data sources over time facilitates tracking how the child care prices change over time. Use of existing datasets, such as the CCR&R database, for studies such as this, decreases the costs and thus increases the feasibility of periodic data collection and analysis. Further,

^{xiii} Building Results III: 1998 (ref. 19)

^{xiv} Grobe, et al.: 2008 (ref. 18)

the CCR&R staff are well connected with their communities, leading to more accurate and complete data collection. For example, they know how to best get ahold of different facilities (e.g., phone vs. email) and often have staff who speak multiple languages to communicate with facilities.

Additionally, the CCR&R database reflects the complexity of the state's child care market. Less complexity would oversimplify the market and the findings. However, complexity is often confusing. It falls to the analysis approach to ensure that findings related to key policy variables can be easily understood and interpreted.

METHODOLOGICAL ISSUES

DEFINING THE MARKET PRICE SAMPLE

This section describes the data that were included in the market price study data analysis, discussing the following:

- Exclusion of part-time prices and preschool programs
- Exclusion of exempt family providers without referrals
- Elimination of records without price data
- Elimination of records not meeting the data currency standard

Exclusion of Part-Time Prices and Preschool Programs

Because part-time programs, particularly part-time preschool programs, are a different market from full-day programs and have a different price structure, their prices should be calculated separately. The main concern with part-time prices is the ability to interpret the prices when identified. For example, part-time preschool program prices may have been based on 2 days a week for 3-year-olds, 3 days a week for 4-year-olds, or only 1 day a week for some programs regardless of age. Given this issue, the current market price study did not examine part-time preschool programs or facilities that only reported part-time prices. As a result, 393 facilities were excluded from the analysis.

Exclusion of Exempt Family Providers without Referrals

Exempt family providers that did not want referrals from Find Child Care Oregon (FCCO) were excluded from the analysis. These providers may be relative subsidy providers and/or were in the CCR&R database to get access to training and technical assistance but were not part of the market. In addition, exempt family providers not accepting referrals had lower prices than both licensed small-home based providers (i.e., registered family care) and other exempt family providers who indicated they would accept referrals in FCCO. This provides additional evidence that exempt family providers without referrals are a distinct group of providers. In total, 149 facilities were excluded from the analysis (over half of which did not have current price data).

It is also important to note that prices did not differ between exempt family providers who accepted referrals and licensed small home-based providers. The statewide price analysis was conducted on a sample with and without exempt providers who accept referrals and no substantial differences were found. Hence, exempt providers who accept referrals were kept in the Market Price Study analysis. Therefore, small home-based care includes registered family homes (n = 922) and exempt family child care who receive referrals from Find Child Care Oregon (n = 79).

Elimination of Records Without Price Data

Of the 4,898 records provided by the CCR&R database, 1,061 facility records were dropped from the study because these facilities had reported no full-time price data to the local CCR&R. Of the 1,061 facilities eliminated because they lacked price data, 698 (66%) were centers. Many of these excluded centers were classified as free programs to income-eligible families (such as Heart Start programs). In addition to the excluded centers, 182 small home-based care and 182 large home-based care were eliminated because they did not report price data. The reason for not reporting price data to the CCR&R (if known) is provided in Table 1.

Table 1

Reason for Facilities Not Reporting Full-Time Price Data (N = 1,061)	
Category	Category Total N
Free program to income-eligible families	398
Facility does not consider itself part of the market	132
Negotiated prices or sliding scale	39
Unknown reason	493

- The most common reason given was that the facility offered a free program for families who met specified income eligibility requirements. Head Start programs were examples of a no-fee program. Centers that did not have fees may have required the parent to work at the center or participate in a program or may have had their costs reimbursed by grants or other agencies.
- The second most common reason for not reporting price data was that the facility indicated they did not consider themselves part of market care. This included facilities that were not open to the general public, such as facilities associated with women's shelters or with drug and treatment programs. It also included parent co-ops, who often have reduced rates in exchange for parents volunteering in the program, and providers who were only willing to care for children of family, friends, or neighbors but who wanted to be included on the CCR&R database for reasons such as access to training and technical assistance.
- Another 39 facilities stated that they did not submit price data because they have a variable price structure. This means they either negotiate prices with parents or use a sliding scale based on income or the parent's ability to work at the center.
- The remaining 493 facilities lacked price data for an unknown reason. Possible reasons for missing data include non-response to request for update, refusal to provide information, or not being contacted by the CCR&R due to inaccurate contact information or another barrier.

Elimination of Records Not Meeting the Data Currency Standard

In accordance with national guidance to states on market price surveys, prices collected prior to the six-month data collection period were removed from the analyses file because these older prices could skew findings. A total of 633 facility prices were updated prior to July 2024; six months before the data was downloaded for analysis.

Elimination of Prices without Supply Data

In the Market Price Survey analysis, prices are weighted by the number of child care slots. Therefore, to provide accurate results, prices reported for facilities that did not have corresponding slots in the age group were excluded from the analysis. As a result, 5 facilities were dropped from the analysis.

After the exclusion of the above-mentioned facilities, the final analytic sample was 2,656. This includes 1,001 (38%) small home-based care, 883 (33%) centers, and 772 (29%) large home-based care.

OTHER DATA CONSIDERATIONS

Large Home-Based Care as a Distinct Type of Care

A central question when conducting the market price analysis was how to represent data for larger home-based facilities. Should there be a separate price category for large home-based care? Or should large home-based care be combined with small home-based care or center care? The decision on how to represent data for large home-based care was based on two factors: (1) the sample size of large home-based care prices, and (2) the similarity of large home-based care prices to small home-based care and center care prices.

Similar to previous years, large home-based care prices were separated from center and small home-based care in the 2024 data analysis. A sufficient number of large home-based facilities (n = 772) were included in the database to support the separation of large home-based care from other care settings for data analysis. In addition, because large home-based prices tended to be lower than the prices reported by centers and higher than those reported by small home-based providers, there was concern that merging the large home-based data with either of these other types of care may mask meaningful variation in price findings.

School-Age Prices

In late 2020, the data system used by the CCR&Rs changed from NACCRRAware to Find Child Care Oregon (FCCO). With this shift came a change in how school-age programs reported their supply and prices. In prior years, the market price study reported both school age school year and school age summer prices, allowing for distinct analysis of these two types of school-age care. School-age school year prices are considered inherently part-time prices, given that they are typically based on before- and after-school care for 20 to 30 hours or less a week. School-age summer prices are typically full-time rates and historically most similar to preschool-age prices. In 2022, the FCCO system collected all school-age prices in a single field, rather than separating out school year and summer. With the change to one data collection field, it was harder to distinguish if school-age programs were reporting prices for part-time school year care or summer care in 2022.

In 2024, to improve price data from school-age programs, an expanded table for school-age prices was added to the data collection. This table allowed providers to report separate prices for school year (before school, after school, before and after school) and summer (full-time and part-time) care. This was in addition to one main school-age category that did not distinguish between the types of school-age care. 1,470 providers had data in the main rates table for school-age prices in one category. 1,002 reported in the new expanded table; 739 of these providers reported on both tables. Although fewer providers completed data in the expanded table, there is value in being able to separate out the full-time summer prices from the part-time school year before and after-school prices. Therefore, in 2024, the report provides school-age results only the newly expanded table in two categories for school-age school year (n = 891) and school-age full-time summer (n = 616).

Despite these improvements, there are still limitations to the school-age data. Capacity for school-age care was still only collected as one field, so there is no way to distinguish between the number of slots a program had in the summer versus school year. This has implications for weighting variables as the age group capacity is used to calculate the price per slot. The price per slot calculation is also further confounded by the nature of school-age care, particularly in centers. Centers tend to have the highest

capacity for school-age care. In 2024, those with the highest capacity (mostly exempt programs) also had the lowest prices. This resulted in a lower price per slot estimate for centers than in previous years, particularly for school year prices.

Overall, although some improvements were made, data limitations make it unclear if school-age prices accurately reflect the prices of summer and school year care in the current market. **Therefore, like in 2022, school-age prices are reported in statewide 2024 results, but were not analyzed over time or used in the analysis for geographic price clusters.**

Converted Prices

Prior to 2000, facilities were able to report in only one price mode. One significant change with the move to the use of the NACCRRAware database (2000-2020) and current use of Find Child Care Oregon (FCCO) (2022-2024) database was that facilities were able to report prices in all the modes that they charge: hourly, daily, weekly, or monthly. The result was four independent, non-equivalent price modes. In the 1992, 1994, and 1999 market price studies, formulas were used to convert all reported prices into one mode. For example, all hourly, daily, and weekly prices were converted into a monthly price using conversion formulas. The intent was to simplify reporting and facilitate comparison of prices. The problem with converted prices was their inability to convert accurately.^{xv} There was no basis for assuming the length of a day or number of days that would be considered full-time. Further, converted prices did not recognize that facilities that reported only hourly prices may have systematically different prices than facilities that reported prices by the day, week, or month. **Because of concerns with the accuracy of converted price data, no prices were converted in the 2024 data analysis. Rather, the prices were analyzed in the mode(s) that facilities reported them.**

PRICE MODE

Until recently, the predominant mode (hourly, daily, weekly, monthly) used by facilities to charge parents varied across type of care. The two most common modes in Oregon are hourly and monthly. Table 2 provides a comparison of the number of facilities reporting in these modes over the last three market price studies. For center and large home-based care, monthly has consistently been the most common mode reported by facilities for all types of care. For small home-based care, trends in pricing modality have changed over time. Hourly was the most predominant mode facilities used to charge parents through 2018. In 2020, hourly and monthly were both used about equally. In 2022 and 2024, monthly became the most predominant mode used.

Since monthly is now the most predominant mode across all three types of care, monthly prices were used in most analyses of the 2024 Market Price Study, including the statewide analysis and geographical cluster analysis. However, when exploring prices over time both hourly and monthly prices are reported for small home-based care to reflect this change over time.

^{xv} Market Rates, 1994: 1995 (ref. 4).

Table 2

Comparison of Number of Providers Who Charge in a Particular Mode Based on the 2024, 2022, and 2020 Market Price Studies, by Type of Care and Age of Child

	2024		2022		2020	
	Hourly	Monthly	Hourly	Monthly	Hourly	Monthly
Small Home-Based						
Infant	272	485	270	476	474	482
Toddler	313	564	326	543	565	582
Preschool	346	605	369	577	665	666
School Age School Year	178	141	342*	431*	684	458
School Age Summer	68	191	---	---	525	389
Center						
Infant	18	301	24	276	33	282
Toddler	27	373	25	349	35	350
Preschool	44	537	41	535	63	472
School Age School Year	55	243	52*	293*	86	260
School Age Summer	15	106	---	---	53	158
Large Home-Based						
Infant	65	474	67	396	58	347
Toddler	77	570	78	502	80	512
Preschool	78	618	93	580	81	543
School Age School Year	54	115	70*	236*	83	251
School Age Summer	19	136	---	---	64	200

Light gray shading represents the highest number of facilities reported in mode; counts include any mode the facility provided data for.

*In 2022, school-age programs were only able to report prices in one data collection field, thus the 2022 rates are listed under school age school year, but this is likely a mixture of both school year and summer care.

PRICE PER CHILD CARE SLOTS

Facilities are not equal in the number of slots they offer to a community, therefore, to more closely represent what is available to families, the price per child care slot was calculated. The price per child care slots was calculated by weighting the reported prices by facility capacity. The maximum number of children desired by the facility is used rather than regulated capacity, as many programs do not enroll to their legal capacity, especially in center-based programs. Total age-group capacity was defined as the total capacity for a given age group - infants, toddlers, preschool, school-age. The purpose of calculating the price per child care slot was to represent the actual prices available to consumers in the community, regardless of whether it was a large or small capacity facility.

For centers and large home-based care, age group capacity was used to weight care prices. Weighting prices by capacity was most important for centers, which varied significantly by size. Total age-group capacity data were used because: (1) it was possible to collect data on total age group capacity for centers and large home-based care, and (2) age-group capacity used in conjunction with the prices of that age group most accurately reflected weighted prices for that particular age group. For centers and large home-based care with missing age capacity data, age group capacity was imputed by calculating the proportion of total capacity from all available age group capacity data.

For small home-based providers, total capacity regardless of child age, was used to weight care prices. Unlike centers and large home-based care that are licensed for a set capacity for each age group, small home-based providers are licensed for a total capacity (with some restrictions such as no more than two children under age two).

Comparison of Child Care Facility Prices and Child Care Slot Prices

Table 3 compares statewide prices for type of care and age of child served by price type (child care facility price or child care slot price). This comparison was made to determine if the facility price or slot price differed systematically.

Results of comparing the 75th percentile levels for child care facility prices and child care slot prices showed that:

- Among small home-based care prices, facility prices and slot prices were identical for all monthly comparisons of 75th percentile prices.
- Among center care prices, prices weighted by child care slots were higher than monthly facility prices in three of the five comparisons. In these cases, weighted slot prices averaged \$58 higher than the unweighted prices. Weighted slot prices were lower than monthly facility prices for the two school-age comparisons.
- Among large home-based care, monthly facility prices and monthly slot prices were identical for all but one comparison of 75th percentile prices. School-age school year weighted slot prices were higher than the unweighted prices.

The comparison revealed that the prices are similar within age groups and facility type, whether these prices are by facility (i.e., unweighted prices) or by child care slot (i.e., weighted prices) for small and large home-based care. Centers showed systematic differences between weighted and unweighted prices, which is logical because centers widely vary in capacity, especially for school-age children.

Because child care slots best represent what is available to families, they were used as the basis for graphing prices and the geographical area analysis (cluster) results.

Table 3

**Comparison of Child Care Facility Prices and Child Care Slot Prices
Monthly 75th Percentile**

	Facilities (Unweighted)		Child Care Slots (Weighted by Capacity)	
	N	Price	Capacity	Price
Small Home-Based Care				
Infant	485	\$1,157	4,376	\$1,157
Toddler	564	\$1,050	4,899	\$1,050
Preschool Age	605	\$967	5,232	\$967
School Age School Year	141	\$719	1,273	\$719
School Age Summer	191	\$850	1,718	\$850
Centers				
Infant	301	\$1,997	3,887	\$2,060
Toddler	373	\$1,923	5,473	\$1,995
Preschool Age	537	\$1,500	18,179	\$1,540
School Age School Year	243	\$556	9,054	\$440
School Age Summer	106	\$1,265	2,281	\$1,200
Large Home-Based Care				
Infant	474	\$1,809	1,380	\$1,809
Toddler	570	\$1,675	2,283	\$1,675
Preschool Age	618	\$1,466	3,978	\$1,466
School Age School Year	115	\$1,000	323	\$900
School Age Summer	136	\$1,150	385	\$1,150

FINDINGS

STATEWIDE CHILD CARE PRICES

Statewide, full-time child care prices are shown in Table 5. These prices are based on the current charges reported by child care facilities to their local Child Care Resource and Referral (CCR&R) as of December 2024. Specifically, Table 5 shows the **full-time prices** at the 75th percentile of child care slots^{xvi} by **type of care** (small home-based, center, large home-based), **age of child** served (infant, toddler, preschool-age, school age school year, school age summer), and by **pricing modes** (hourly, monthly). For complete results of statewide full-time prices at various percentiles for all pricing modes and age groups, see [Appendix B](#).

The 75th percentile of prices is the price level at which 75% of child care slots may be purchased^{xvii}. For example, the 75th percentile of infant care prices is \$1,157 for full-time, monthly small home-based child care. This means that statewide 75% of the infant slots may be purchased for \$1,157 a month or less in small home-based child care settings.

Table 4

**2024 Statewide Full Time Prices at the 75th Percentile for Child Care Slots
by Type of Care and Pricing Mode**

	Infant	Toddler	Preschool	School Age School Year	School Age Summer
<i>Monthly</i>					
Small Home-Based	\$1,157	\$1,050	\$967	\$719	\$850
Large Home-Based	\$1,809	\$1,675	\$1,466	\$900	\$1,150
Center	\$2,060	\$1,995	\$1,540	\$440	\$1,200
<i>Hourly</i>					
Small Home-Based	\$7.00	\$6.33	\$6.00	\$5.79	\$5.67

*School-age center prices should be interpreted with caution, see Methodological Issues.

See [Appendix B](#) for complete results of all pricing modes at various percentiles.

^{xvi} The price per child care slots was calculated by weighting the reported prices by facility capacity. The purpose of calculating the price per child care slot was to represent the actual prices available to consumers in the community, regardless of whether it was a large or small facility. For centers and large home-based care, total age group capacity was used to weight care prices. For small home-based providers, total capacity regardless of age of child served, was used to weight care prices. For more information on weighting by child care slots, see the Price Per Child Care Slots section under Methodological Issues.

^{xvii} The Federal Office of Child Care defines the 75th percentile of the current child care market prices as the benchmark for equal access, and considers payment rates set at or above the 75th percentile as providing equal access.

https://childcareta.acf.hhs.gov/sites/default/files/public/508ed-75th_percentile_exercise.pdf

Several trends in statewide child care prices are apparent in Table 4 and Figure 1, and are consistent with trends from the previous market price studies. Among these are the following:

- Prices are lower for small home-based child care than for centers and large home-based care regardless of age of child served or pricing mode.
- For all types of care, preschool and school-age prices are lower than infant and toddler care monthly prices.
- Large home-based prices are closer to center prices than to small home-based prices, especially for infant, toddler, and preschool monthly prices.

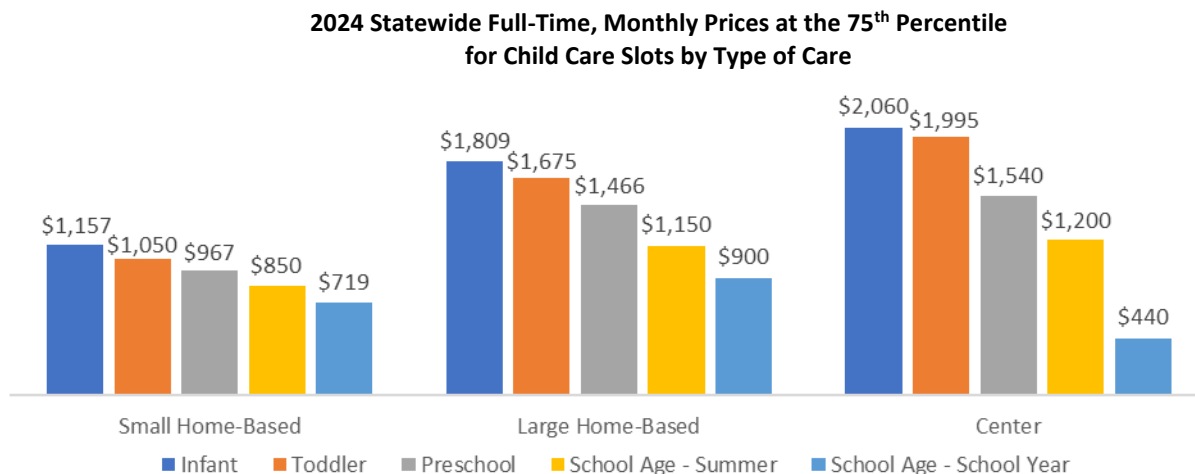


Figure 1

These statewide figures are informative but do not capture the substantial range of prices and submarkets found across Oregon. Child care markets are local and prices differ substantially across the state. [Appendix C](#) provides median monthly prices (50th percentile) by type of care and age group across Oregon counties. In addition, see the GEOGRAPHIC PRICE CLUSTERS section for the findings of the cluster analysis that explored price differences across communities.

CHANGES IN CHILD CARE PRICES OVER TIME

To further examine changes in facility prices over the years, market price data in 2000, 2002, 2004, 2006, 2008, 2010, 2012, 2014, 2016, 2018, 2020, 2022, and 2024 were compared^{xviii}. Table 5 presents the statewide 75th percentile full-time prices for child care slots by type of care and age groups served. See [Appendix D](#) for statewide 50th, 75th, and 90th percentile full-time prices for child care slots over time.

It is important to note that trends in pricing modality for small home-based child care has changed over time. Hourly was the most predominant mode facilities used to charge parents through 2018. In 2020, hourly and monthly were both used about equally. In 2022 and 2024, monthly became the most predominant mode for this type of care. Therefore, both hourly and monthly are reported over time for

^{xviii} Due to inconsistencies in data collection and price data available, 1994 and 1999 were excluded from Table 5 for the 2024 Report. For past prices, see previous Market Price Study Reports.

small home-based care. For center and large home-based care, monthly has consistently been the most common mode reported by facilities over time.

Table 5

Full Time Prices at 75th Percentile Among Oregon Statewide Child Care Slots					
	Infant	Toddler	Preschool Age	School Age School Year	School Age Summer
Small Home-Based Hourly					
CCR&R 2000	\$2.25	\$2.05	\$2.00	\$2.00	\$2.00
CCR&R 2002	\$2.50	\$2.35	\$2.25	\$2.25	\$2.25
CCR&R 2004	\$2.50	\$2.50	\$2.50	\$2.50	\$2.35
CCR&R 2006	\$2.80	\$2.50	\$2.50	\$2.50	\$2.50
CCR&R 2008	\$3.00	\$3.00	\$3.00	\$3.00	\$3.00
CCR&R 2010	\$3.00	\$3.00	\$3.00	\$3.00	\$3.00
CCR&R 2012	\$3.00	\$3.00	\$3.00	\$3.00	\$3.00
CCR&R 2014	\$3.50	\$3.25	\$3.00	\$3.00	\$3.00
CCR&R 2016	\$3.50	\$3.50	\$3.25	\$3.25	\$3.00
CCR&R 2018	\$3.75	\$3.50	\$3.50	\$3.50	\$3.50
CCR&R 2020	\$4.00	\$4.00	\$4.00	\$4.00	\$4.00
CCR&R 2022	\$6.00	\$5.00	\$5.00	\$5.00 ¹	-
CCR&R 2024	\$7.00	\$6.33	\$6.00	\$5.79	\$5.67
Small Home-Based Monthly					
CCR&R 2000	\$420	\$400	\$400	\$350	-
CCR&R 2002	\$500	\$460	\$450	\$375	\$400
CCR&R 2004	\$460	\$450	\$425	\$340	\$400
CCR&R 2006	\$500	\$480	\$450	\$360	\$445
CCR&R 2008	\$550	\$500	\$500	\$400	\$493
CCR&R 2010	\$560	\$528	\$500	\$450	\$500
CCR&R 2012	\$560	\$530	\$500	\$450	\$500
CCR&R 2014	\$600	\$600	\$550	\$500	\$500
CCR&R 2016	\$670	\$640	\$600	\$550	\$550
CCR&R 2018	\$670	\$645	\$610	\$560	\$600
CCR&R 2020	\$800	\$700	\$700	\$600	\$600
CCR&R 2022	\$1,085	\$960	\$900	\$750 ¹	-
CCR&R 2024	\$1,157	\$1,050	\$967	\$719	\$850

Continued on next page

Table 5 (continued)

Full Time Prices at 75th Percentile Among Oregon Statewide Child Care Slots

	Infant	Toddler	Preschool Age	School Age School Year	School Age Summer
Center Care Monthly					
CCR&R 2000	\$645	\$640	\$495	\$295	\$370
CCR&R 2002	\$750	\$745	\$565	\$305	\$535
CCR&R 2004	\$828	\$820	\$625	\$315	\$600
CCR&R 2006	\$865	\$865	\$667	\$395	\$666
CCR&R 2008	\$935	\$938	\$737	\$410	\$700
CCR&R 2010	\$1,044	\$998	\$807	\$425	\$718
CCR&R 2012	\$1,121	\$1,081	\$850	\$419	\$700
CCR&R 2014	\$1,219	\$1,200	\$890	\$477	\$779
CCR&R 2016	\$1,302	\$1,250	\$980	\$480	\$739
CCR&R 2018	\$1,410	\$1,400	\$1,055	\$500	\$699
CCR&R 2020	\$1,570	\$1,595	\$1,200	\$520	\$780
CCR&R 2022	\$1,860	\$1,790	\$1,386	\$545 ^{1,2}	-
CCR&R 2024	\$2,060	\$1,995	\$1,540	\$440 ²	\$1,200 ²
Large Home-Based Monthly					
CCR&R 2000	\$650	\$625	\$525	\$390	-
CCR&R 2002	\$655	\$651	\$525	\$350	\$400
CCR&R 2004	\$700	\$650	\$550	\$400	\$550
CCR&R 2006	\$700	\$660	\$600	\$395	\$525
CCR&R 2008	\$800	\$745	\$650	\$450	\$565
CCR&R 2010	\$880	\$800	\$700	\$500	\$600
CCR&R 2012	\$900	\$875	\$750	\$600	\$600
CCR&R 2014	\$960	\$910	\$810	\$620	\$650
CCR&R 2016	\$1,000	\$1,000	\$900	\$650	\$650
CCR&R 2018	\$1,200	\$1,050	\$950	\$650	\$700
CCR&R 2020	\$1,300	\$1,200	\$1,044	\$750	\$750
CCR&R 2022	\$1,650	\$1,568	\$1,275	\$1,000 ¹	-
CCR&R 2024	\$1,809	\$1,675	\$1,466	\$900	\$1,150

Market price studies used price data given by facilities to their local CCR&R. 2000 (6,504 providers), 2002 (6,308 providers), 2004 (6,232 providers), 2006 (5,882 providers), 2008 (5,597 providers), 2010 (5,272 providers), 2012 (4,924 providers), 2014 (4,321 providers), 2016 (3,929 providers), 2018 (3,497 providers), 2020 (2,936 providers), 2022 (2,752 providers), and 2024 (2,656 providers). 2024 prices current as of December 2024.

¹In 2022, school-age programs were only able to report prices in one data collection field, thus the 2022 rates are listed under school age school year, but this is likely a mixture of both school year and summer care.

²School-age center prices should be interpreted with caution, see Methodological Issues for more information.

Changes Over Time for Nominal and Inflation Adjusted Prices

Between 2000 and 2024 statewide prices increased for all ages and types of care. The findings below illustrate how prices have increased over time by type of care (center, large home, and small home) and age groups served (infant, toddler, and preschool^{xix}) using rates weighted by child care slots for both nominal and inflation adjusted prices^{xx}.

Small Home-Based Care

For small home-based care, prices have increased more modestly than other facility types. Since trends in pricing modality for small home-based child care has changed over time both hourly and monthly prices are reported.

Hourly Small Home-Based Rates

Between 2022 and 2024^{xxi}, small home-based hourly prices increased by 17%, 27%, 20% for infant, toddler and preschool age groups. In looking over time, nominal hourly rates for small home-based child care have increased since 2000, with most of that increase being since 2018. Nominal hourly prices have increased by 211% for infants, 209% for toddlers, and 200% for preschool since 2000, see Figure 2.

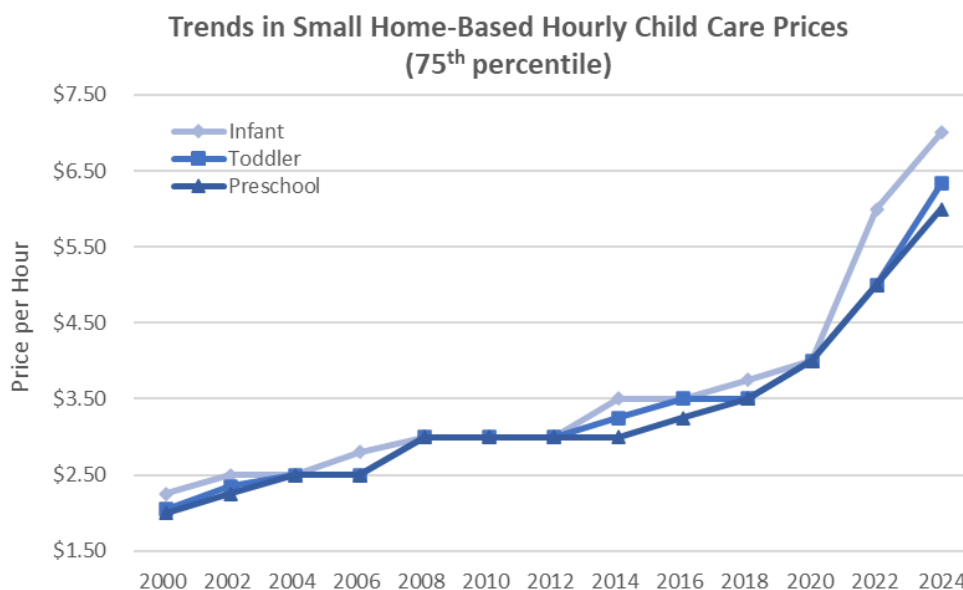


Figure 2

After adjusting for inflation, small home-based hourly prices rose by 9% for infants, 18% for toddlers, and 12% for preschool care between 2022 and 2024. In looking over time, small home-based hourly prices remained relatively constant between 2000 and 2018, with a larger increase over the last four years, especially for infants. The overall percent increase in rates since 2000 (after adjusting for inflation) was 71% for infants, 70% for toddlers, and 65% for preschoolers, see Figure 3.

^{xix} Due to changes in data collection, school-age prices were not analyzed over time. See note in Methodological Issues for additional information.

^{xx} The Consumer Price Index for All Urban Consumers (CPI-U) (which covers approximately 93 percent of the total U.S. population) is used to adjust child care prices for inflation. Adjusting prices for inflation accounts for how the value of money has changed over time, translating all values into 2024 dollars. The inflation rate between 2022 and 2024 was 7%.

^{xxi} Child care prices for 2022 are as of December 2022. Child care prices for 2024 are as of December 2024.

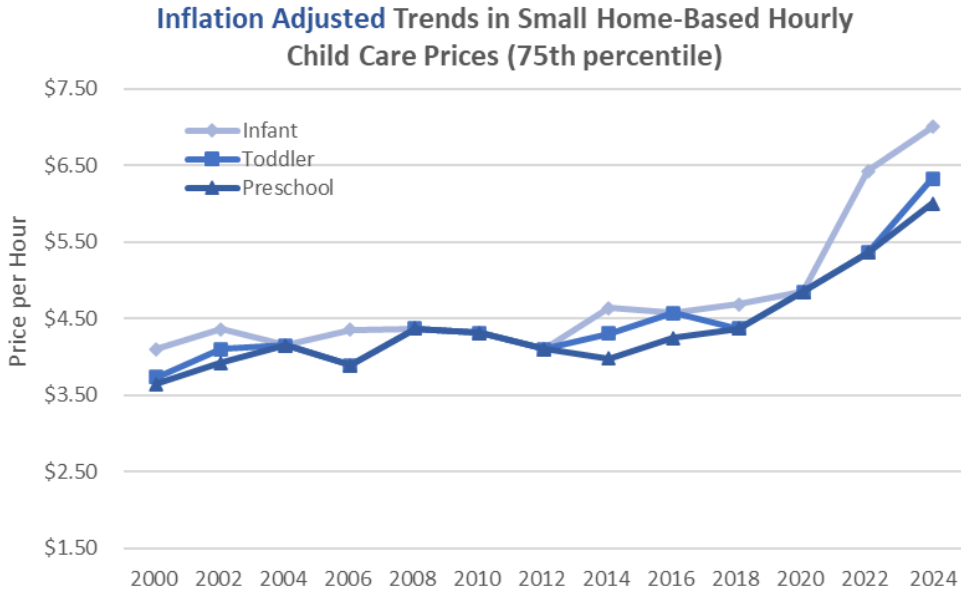


Figure 3

Monthly Small Home-Based Rates

Between 2022 and 2024, small home-based monthly prices increased by 7%, 9%, and 7% for infant, toddler, and preschool age groups. In looking over time, nominal monthly rates for small home-based child care have increased since 2000, with most of that increase being since 2018. Nominal hourly prices have increased by 175% for infants, 163% for toddlers, and 142% for preschool since 2000, see Figure 4.

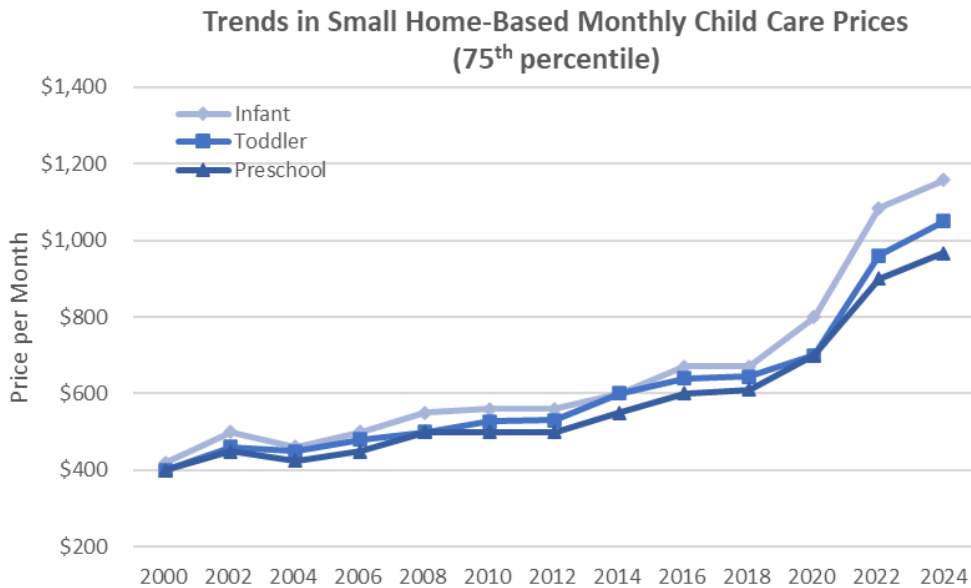


Figure 4

After adjusting for inflation, small home-based prices rose by 2% for toddlers between 2022 and 2024, while remaining stable for infants and preschool care. In looking over time, small home-based monthly prices remained relatively constant between 2000 and 2018, followed by a larger increase between 2018 and 2022 before leveling out with inflation from 2022 to 2024. The overall percent increase in rates since 2000 (after adjusting for inflation) was 51% for infants, 44% for toddlers, and 33% for preschoolers, see Figure 5.

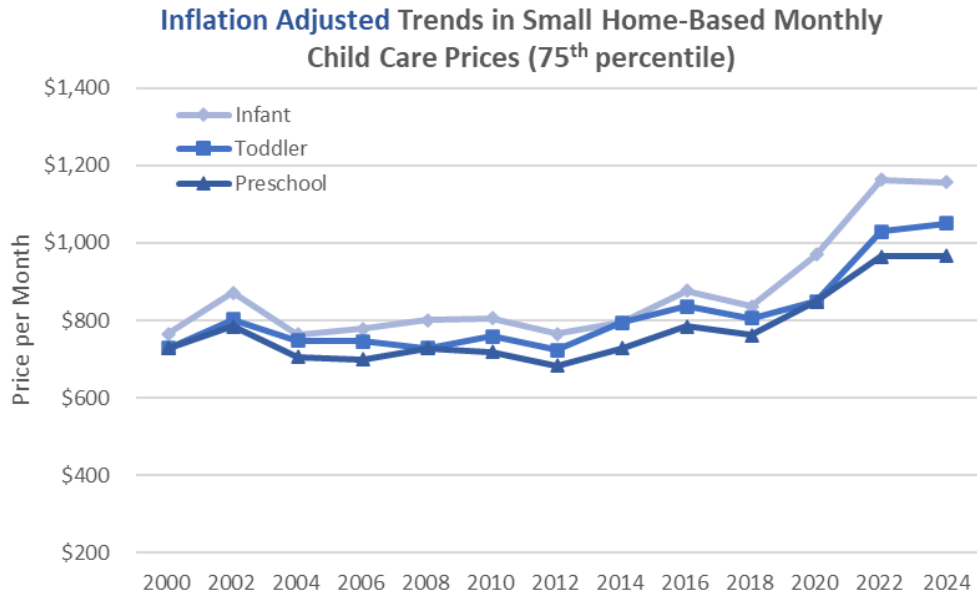


Figure 5

Center Care

For center care, prices have steadily increased across all age groups. Between 2022 and 2024 center prices increased by 11% for all age groups (infants, toddlers, and preschool). In looking over time, nominal prices have increased by 219% for infants, 212% for toddlers, and 211% for preschoolers over the last 24 years, see Figure 6.

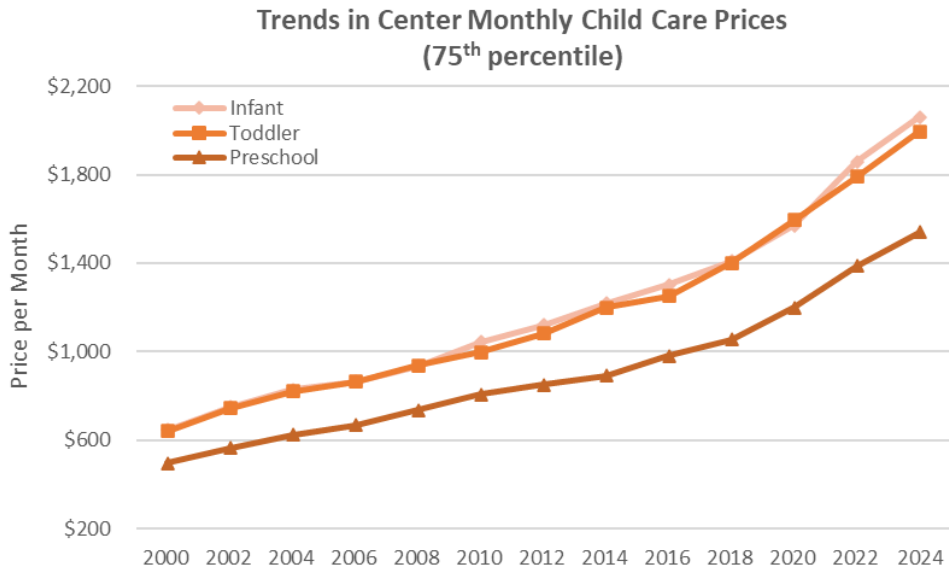


Figure 6

After adjusting for inflation to account for how the value of money has changed over time, prices rose by 3% for infants and 4% for toddlers and preschoolers between 2022 and 2024. In looking over time, center care prices increased faster between 2000 and 2004, leveled off for a few years, and then increased again. The percentage increase in rates since 2000 (after adjusting for inflation) was 75% for infants and 71% for toddlers and preschoolers, see Figure 7.

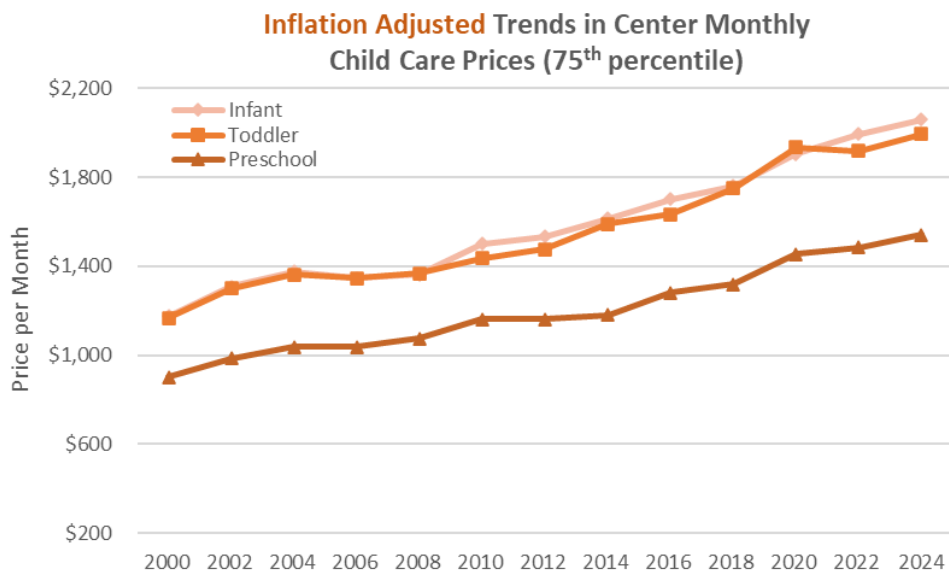


Figure 7

Large Home-Based Care

For large homes, prices have steadily increased across all age groups. Between 2022 and 2024, large home prices increased by 10%, 7%, and 15% for infant, toddler, and preschool age groups, respectively. Over the last 24 years, nominal prices have increased by 178% for infants, 168% for toddlers, and 179% for preschoolers, see Figure 8.

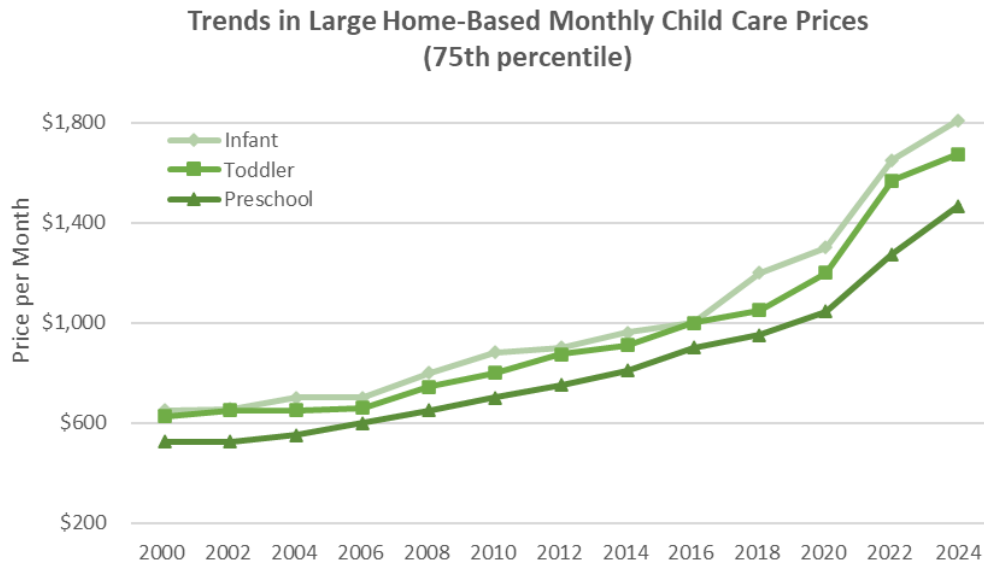


Figure 8

After adjusting for inflation, large home prices infant prices rose by 2% and preschool by 7%, but toddler prices decreased by a half of a percent between 2022 and 2024. In looking over time, prices were barely keeping up with inflation from 2000 through 2008. Since then, however, prices have steadily outpaced inflation for large home-based facilities, with leveling out from 2022 to 2024 for infants and toddlers but a continued increase for preschool. Since 2000, inflation adjusted prices have increased by 53%, 47% and 53% for infant, toddler, and preschool age groups, respectively, see Figure 9.

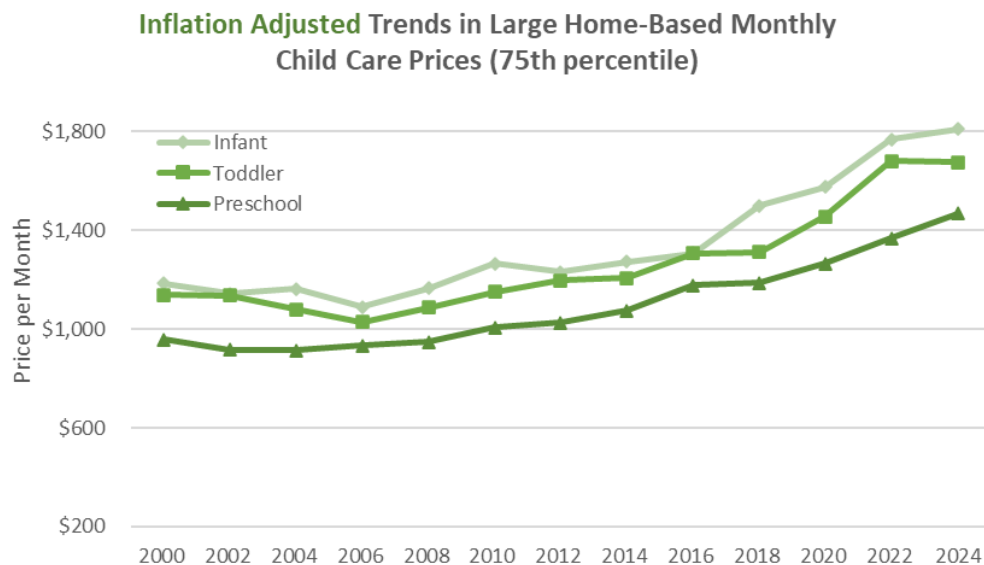


Figure 9

Summary of Changes Over Time

From 2000 to 2024, nominal and inflation-adjusted prices for all types of care and age groups have increased, with the percentage increase in statewide prices greater in center care than in large and small home-based care. Over the last 24 years (after adjusting for inflation), prices have increased the most among centers with a 75% increase for infants and 71% increase for toddlers and preschool age children. Small and large home-based care facilities are similar, with percentage increases ranging from 47-53% for large home-based and 33-51% for small home-based care, depending on the age group and pricing mode.

Prices saw smaller increases between 2022 and 2024 compared to the two years prior (from 2020 to 2022) when growth in prices was larger. Across all three types of care, inflation-adjusted prices between 2022 and 2024 increased by less than 5%, except large home-based preschool prices, which increased by 7% after adjusting for inflation.

GEOGRAPHIC PRICE CLUSTERS

One of the goals for the 2024 Market Price Study is to identify the geographic distribution of prices across the state. The Oregon Department of Early Learning and Care (DELIC) seeks to set its allowable maximum subsidy rates so that families eligible for child care subsidies have access comparable to other families in the general population. The Child Care Development Fund (CCDF) Final Rule benchmark for equal access is defined as subsidy rates that are set at the 75th percentile of the market price within a geographically defined area.^{xxii}

Geographic rate areas were initially established in the 1992 child care market price study. Geographic groups were determined by combining zip code areas with similar child care prices to create geographic groupings called rate areas (A, B, C). Rate Area A represented zip codes with highest prices while the lowest prices were found in Rate Area C. This method relied on a more hands-on approach than did using a statistical software package to create the groups. It identified groups in the price data by looking for high-frequency values and dividing them into groups when there were gaps in prices. In years past, three groups or rate areas tended to work well given the price distributions in Oregon. Each zip code was then assigned to a rate area based on the most common rate area for each pricing mode. A critical step in the process was to smooth the rate areas to ensure geographical consistency. If a zip code area was assigned a different rate area than its neighbors, the data were examined to determine whether this zip code represented a separate market. Also key to the method was the guidance of an advisory committee with extensive knowledge of local child care markets to help define these markets and identify situations when smoothing was necessary.

This method was used from 1992 to 2012 to validate the existence of three different Employment Related Day Care (ERDC) maximum subsidy reimbursement rate areas in Oregon. However, analyses of prices in 2010 and, even more strongly in 2012, indicated changes in how providers were pricing services. The 2020 and 2012 results suggested that the three ERDC subsidy rate areas defined in the past may no longer be accurately describing prices. There were signs that centers and small home-based care prices were not grouping in the same rate areas. Analyses indicated that center and large home-based child care prices were steadily increasing and that prices of small home-based providers were stagnating. Validity testing indicated that the rate areas no longer accurately captured the geographic diversity of the child care market in 2012.

In preliminary analyses of the 2014 data, we found continuation of these trends in geographic groupings that had been observed in 2010 and 2012. Using guidance from a national study on market price surveys the OSU research team looked into alternative methods to identify zip code areas with similar child care prices.^{xxiii} After careful consideration, the team decided to use a univariate classification statistical method based on Jenks optimal "natural breaks". This method looks for groups or clusters that occur in the data based on one variable (in this case, prices) and provides a systematic way to find the optimal natural breaks between groups. This method was used in the 2014, 2016, 2018, 2020, 2022, and 2024 market price studies. The steps used to identify geographic price clusters are summarized below.

^{xxii} The preamble to the CCDF Final Rule suggests as a benchmark that rates established at least at the 75th percentile "would be regarded as providing equal access." Ensuring equal access is one of three components outline in the federal regulations. Child Care and Development Fund Final Rule: 1998 (ref. 20).

^{xxiii} Grobe et al.: 2008 (ref. 18)

Step 1 was to determine which age group prices were most representative of all age group prices. Using small home-based, center, and large home-based care data for each zip code area, a combined average price for infant, toddler, and preschool age care was calculated and compared to the average prices for each separate age group. Table 6 illustrates how the combined average prices across age groups (first grey column) compares to the average small home-based prices for toddlers (second grey column).

Table 6

Comparison of the Average Price Combined for Infants, Toddlers, and Preschool to Average Prices by Child Age Group, Using a Selected Sample of Small Home-Based Care Data across Counties

	Combined Average	Infant Care Average		Toddler Care Average		Preschool Care Average	
Monthly	Avg. Price ^a	N ^b	Avg. Price	N ^b	Avg. Price	N ^b	Avg. Price
Small Home-Based Care							
State	\$921	485	\$1,005	564	\$920	605	\$871
Clackamas	\$1,101	20	\$1,213	28	\$1,107	34	\$1,043
Jackson	\$799	24	\$838	25	\$791	28	\$776
Multnomah	\$1,093	50	\$1,267	64	\$1,112	65	\$1,029
Linn	\$835	26	\$835	25	\$818	28	\$823

^a Average price across age groups (infants, toddlers, and preschool age in full-time care) using small home-based care data.

^b Sample size of providers with prices for that particular county.

Toddler prices were found to be closest to the combined price, and most representative of all age group prices. **Thus, toddler prices were selected as the basis for grouping zip codes by price data. Toddler prices were also used as the basis for grouping price data in previous studies.**

Once toddler prices were selected to represent all age group prices, **Step 2** was to determine the predominant pricing mode (hourly, daily, weekly, monthly) used by facilities for each type of care. Selecting the predominant pricing mode by type of care is important because it produces the largest sample size in which to conduct the cluster analysis. The two most common modes in Oregon are hourly and monthly, with monthly becoming the most prominent mode for all types of care in 2024, see Methodological Issues section for more information. **Thus, the cluster analysis used monthly prices for all types of care and age groups.**

Step 3 involved calculating the 75th percentile for toddler prices in each zip code area using small home-based, center, and large home-based toddler price data. Price data weighted by child care slots most accurately represent the prices available to consumers in the community. For each type of care, the 75th percentile slot price data was analyzed to find the best arrangement of prices into different classes or groupings using a statistical software program. Results of the different cluster models were evaluated and compared to identify the solution that had the best model fit. **At the end of this selection process, three clusters (1-3) best represented price groupings in small home-based care and four clusters (1-4) for center and large home-based care.** Higher number clusters represent higher prices and vice versa for lower cluster numbers.

To validate the toddler cluster solution determined in the prior step, **Step 4** included repeating the cluster procedures for infant and preschool-age group prices. The infant and preschool cluster solutions were then compared to the toddler price results determined in step 3. These results were used to assess consistency in price grouping across different age groups served within the same zip code. Once the zip

codes were divided into preliminary clusters by type of care and age group, a series of tests and visual inspection of maps was done to make sure that, based on price data, the statistically derived clusters appeared valid and consistent across ages.

Step 5. In past studies, a critical step was to smooth the clustering toward geographical consistency. Price consistency within geographic boundaries (ex. cities/towns) is desired to avoid “islands” of price discrepancies. For example, based on prices alone, one northwest Portland zip code was originally assigned to a lower priced cluster. However, this zip code was fully surrounded by the balance of Portland zip codes that were in a higher priced cluster. The rationale for smoothing is that child care markets are made up of parents and providers who have access to one another. Within a city, a zip code does not operate as its own market as parents commonly live in one zip code and access care in a nearby zip code. A city often represents a better option for approximating a child care market. However, for larger cities a single child care market may not accurately reflect the price structure of that city. In prior studies, the decision was made to have two price clusters reflect these price differences in the Portland metropolitan area. For smaller cities such as Medford, Grants Pass, and Albany, a single child care market best reflected their price structure.

In 2024, the study advisory group raised concerns about the process of manually changing zip code assignments derived from the analytic clusters for smoothing purposes. The questions raised centered around if, by smoothing, we are masking potential meaningful variation in how prices differ across Oregon communities. Through a rich discussion of the pros and cons of employing manual smoothing, the research team decided to change their approach and did not employ manual smoothing in the final 2024 models.

Given the goal of geographical cluster analysis is to reflect the prices families encounter in each region for care, it was suggested to combine results across the three types of care rather than having distinct cluster solutions for each type of care. Therefore, to more clearly illustrate that these maps aim to reflect the general picture of child care prices available to families in each area of the state, cluster solutions were merged for centers and large home-based care. Specifically, the two four-group center and large home-based cluster solutions were merged so that the highest cluster reported between the two was used to define the zip code. Small home prices were less varied by zip code and only grouped into three distinct price clusters; thus, they were not comparable to the other types of care that grouped into four distinct price clusters.

Finally, similar to past years, in some geographic areas, there were zip codes without toddler price data because there were no providers, or if there were providers, they did not report a toddler price. In these cases, if there was zip code data available for infant or preschool-age prices, the largest price of the two was used to fill in missing information. If no prices were available for a given zip code, then historical zip code assignments from the 2022 or past study were used to fill in the missing information.

Step 6 was to finalize the geographic price clusters. These clusters were then used as the basis for all subsequent analyses. As described earlier, an analysis of prices by zip code was used to identify similar child care markets across geographies. The result was the identification of two geographic cluster solutions comprised of three clusters (1 – lowest prices to 3 – highest prices) for small home-based providers, and four clusters (1 – lowest prices to 4 – highest prices) for centers and large home-based care.

Comparison of Statewide Prices and Prices in the Clusters

To test the validity of the clusters, we compared Oregon statewide prices to prices in the clusters. If the clusters were valid, within care type and age group served, higher numbered cluster prices should exceed the statewide price, lower numbered cluster prices should be lower than the statewide price. As seen in Figures 9-11 and Table 9 comparing the 75th percentile monthly prices per child care slot, across type of care, and age group served:

- **Prices consistently differ by clusters for all types of care and age of child served.** Higher numbered clusters are consistently the highest prices in the state and lower numbered clusters are the lowest prices. This is particularly true for infants and toddlers.
- **The greatest differences in prices by clusters were found for center care and large home-based care.** This is especially true for infant and toddler care prices. For example, in Cluster 4 the 75th percentile center care for infant care is \$2,360 per month while in Cluster 1 this percentile price is \$1,200 per month, a difference of \$1,160 per month. Similarly, the 75th percentile price for infant care in large home-based care is \$1,809 in Cluster 4 while in Cluster 1 this price is \$1,067 per month, a difference of \$933 per month. Cluster 4 for both types of care appears to occur primarily in the Portland Metro area of the state.
- **Small home-based care prices showed smaller differences by cluster, by geographic areas.** Small home-based care monthly prices ranged from \$1,157 in Cluster 3 to \$850 in Cluster 1 for infant care. These price differences are \$650 per month, substantially less than the \$933-\$1,160 differences observed in center and large home-based care prices by clusters (reported above).
- **For each care type, the highest numbered cluster (i.e., most expensive prices) generally exceeds the state average prices.** Statewide center and large home-based care prices both aligned most closely with cluster 3 (out of 4), suggesting the average monthly average prices are most in line with the second most expensive geographic price area. Statewide small home-based care, which demonstrated less variation across the state, was most closely aligned with clusters 2 (out of 3) for most age groups.

Comparison of 2024 Clusters and Oregon Statewide Prices by Child Care Slots
Small Home-Based Care, Monthly, 75th Percentile

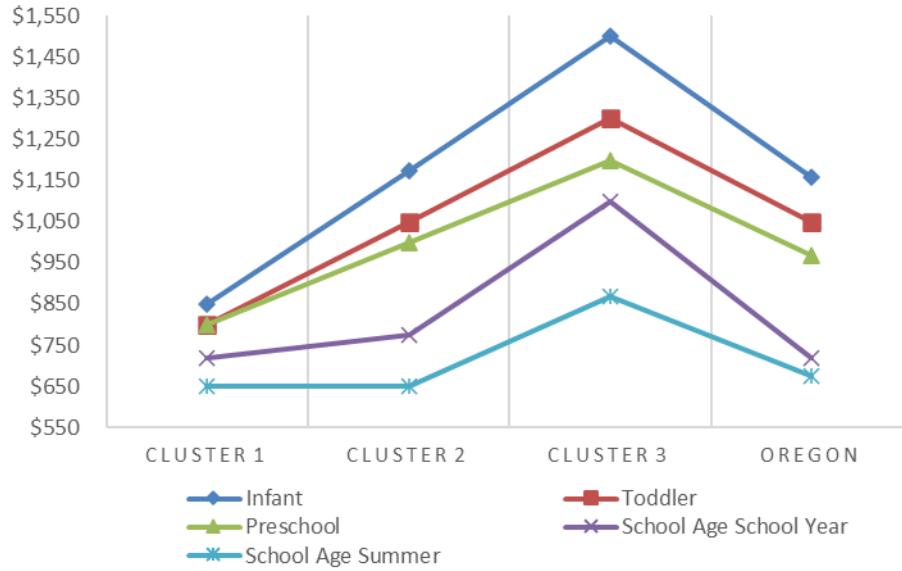


Figure 10

Table 7

**2024 Cluster and Oregon Statewide 75th Percentile Monthly Prices
for Child Care Slots for Small Home-Based Care**

	Cluster 1	Cluster 2	Cluster 3	Oregon
Infant	\$850	\$1,175	\$1,500	\$1,157
Toddler	\$800	\$1,050	\$1,300	\$1,050
Preschool	\$800	\$1,000	\$1,200	\$967
School Age School Year	\$719	\$775	\$1,100	\$719
School Age Summer	\$650	\$650	\$867	\$675

See [Appendix E](#) for complete cluster results.

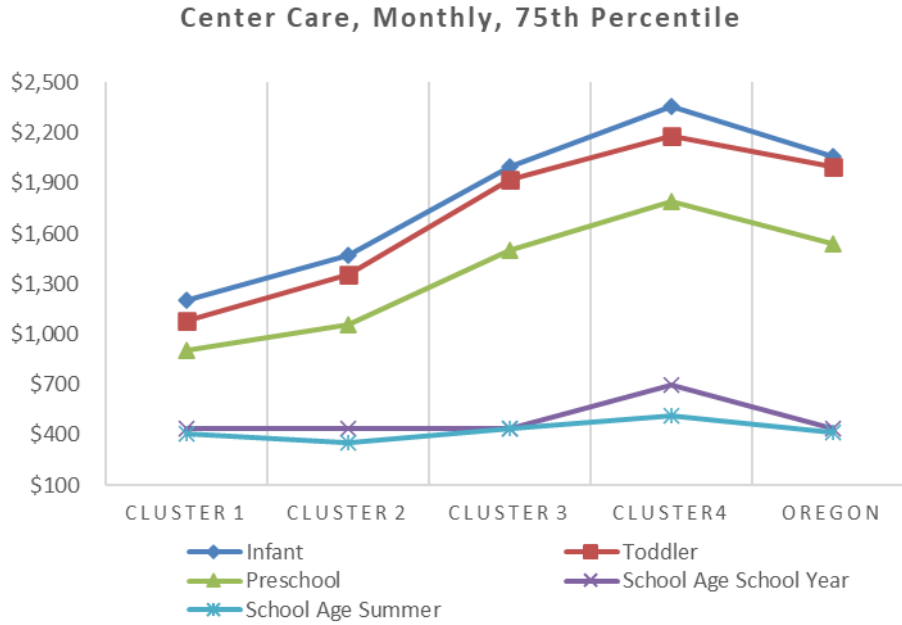


Figure 11

Table 8

**2024 Cluster and Oregon Statewide 75th Percentile Monthly Prices
for Child Care Slots for Center Care**

	Cluster 1	Cluster 2	Cluster 3	Cluster 4	Oregon
Infant	\$1,200	\$1,470	\$2,000	\$2,360	\$2,060
Toddler	\$1,083	\$1,355	\$1,923	\$2,180	\$1,995
Preschool	\$900	\$1,058	\$1,500	\$1,795	\$1,540
School Age School Year	\$440	\$440	\$440	\$700	\$440
School Age Summer	\$410	\$350	\$440	\$510	\$415

See [Appendix E](#) for complete cluster results.

Large Home-Based Care, Monthly, 75th Percentile

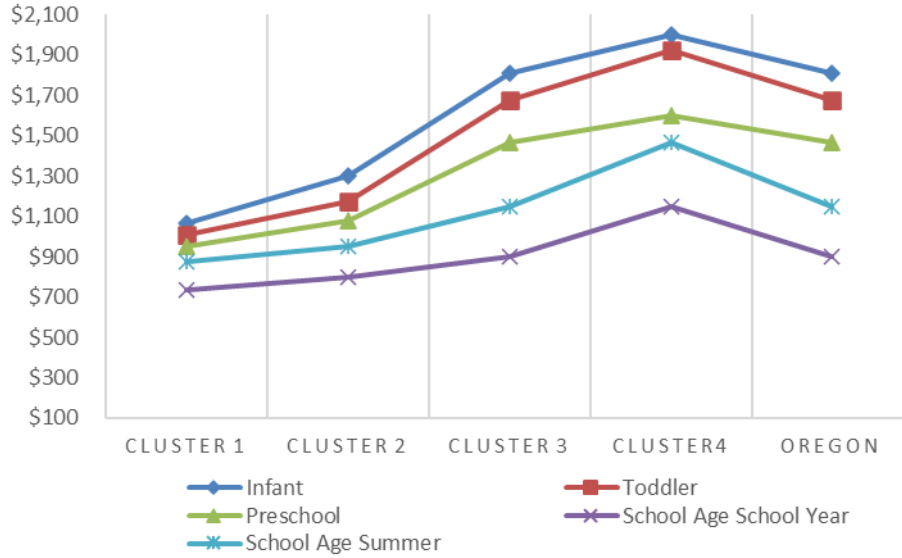


Figure 12

Table 9

2024 Cluster and Oregon Statewide 75th Percentile Monthly Prices for Child Care Slots for Large Home-Based Care

	Cluster 1	Cluster 2	Cluster 3	Cluster 4	Oregon
Infant	\$1,067	\$1,300	\$1,809	\$2,000	\$1,809
Toddler	\$1,008	\$1,175	\$1,675	\$1,920	\$1,675
Preschool	\$950	\$1,075	\$1,466	\$1,600	\$1,466
School Age School Year	\$735	\$800	\$900	\$1,150	\$900
School Age Summer	\$875	\$950	\$1,150	\$1,466	\$1,150

See [Appendix E](#) for complete cluster results.

These patterns validated the clusters and provide evidence of different child care markets in Oregon; these markets are also influenced by type of care provided. Nonetheless, the validation also provides evidence of a trend in price differences based on age of child served. Preschool and school-age school year show smaller price differentials between clusters, especially for center care.

For complete results of prices for each 2024 cluster and Oregon statewide prices for each type of care and age served, see [Appendix E](#).

Geographical Analysis of Clusters

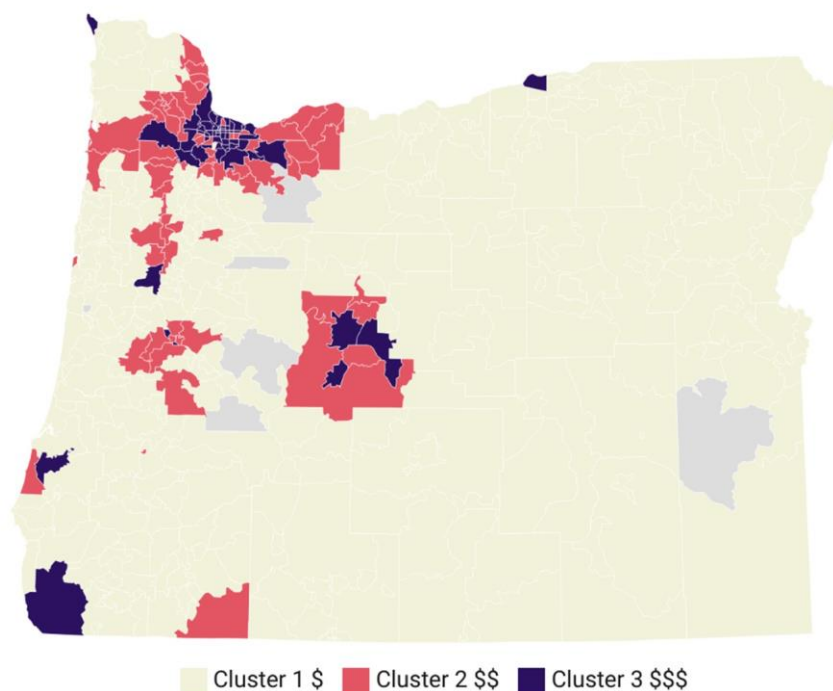
Geographical analysis was conducted to explore the geographical distribution of clusters across Oregon using mapping as well as exploring the urban-rural designation^{xxiv} of zip codes with the clusters.

Small Home-Based Care

Overall, the geographic analysis showed the small home-based care prices to be lower in rural areas of the state and higher in the Portland metropolitan area (Multnomah, Washington, and Clackamas counties) and parts of Benton (Corvallis), Clatsop (Hammond), Coos (Coquille), Deschutes (Bend & Sun River), Lane (Eugene), Morrow (Irrigon), and Yamhill (Newberg) counties (see Figure 13^{xxv}). Of zip codes in cluster 1 (lowest prices), 73% are considered rural using Rural-Urban Commuting Area (RUCA) codes¹, whereas only 6% of zip codes in cluster 3 (highest prices) are rural (see Table 10).

Figure 13

**2024 Geographic Clusters of Child Care Prices
for Small Home-Based Care**



For larger view of map, see page 82.

^{xxiv} Rurality was defined using Rural-Urban Commuting Area (RUCA) codes provided by the Economic Research Service of the U.S. Department of Agriculture which take into account measures of population density, urbanization, and commuting behaviors of the residents. RUCA codes categorize each community (zip code) on a 1-10 scale that supports classification of a community as rural or urban. RUCA codes 1-3 are considered urban and codes 4-10 are considered rural. The most recent RUCA codes are based on data from the 2010 decennial census and the 2006-10 American Community Survey. <https://www.ers.usda.gov/data-products/rural-urban-commuting-area-codes/>

^{xxv} The approach to smoothing outlier zip codes changed in 2024. In the past, outlying zip codes that were surrounded by other cluster results were “smoothed” to provide price consistency within geographic boundaries and avoid “islands” of price discrepancies. Since smoothing was not used in the 2024 final models, there are some zip codes in higher prices clusters that are surrounded by lower price clusters (or vice versa). Since these zip codes tend to be in less populated areas of the state and are based on a small number of providers, results should be interpreted with caution.

Table 10

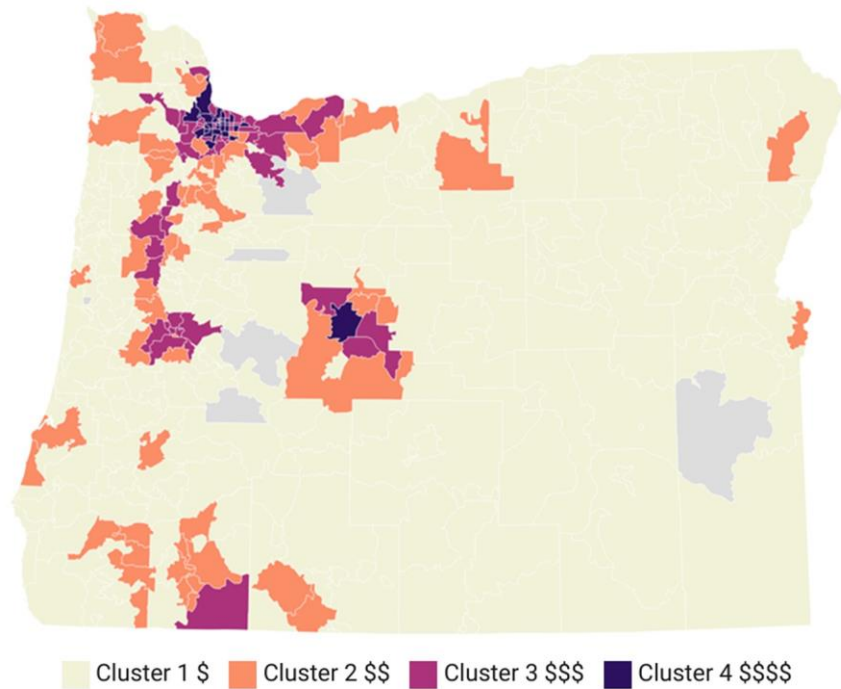
Percent of Zip Codes in Each Small Home-Based Cluster by Urban and Rural Distinction				
	Cluster 1	Cluster 2	Cluster 3	Oregon
Urban	27%	72%	94%	45%
Rural	73%	28%	6%	55%
Total	100%	100%	100%	100%

Center and Large Home-Based Care

For center and large home-based care, the highest prices were generally found in the Portland metropolitan area (Washington, Clackamas, and Multnomah counties), followed by parts Benton (Corvallis), Columbia (St. Helens), Deschutes (Bend & Sisters), Hood River (Hood River), Lane (Eugene/Springfield), Polk (Monmouth, Independence, & West Salem), and Yamhill (Newberg & Dundee) counties (see Figure 14^{xxvi}). Of zip codes in cluster 1 (lowest prices), 74% are considered rural using RUCA codes, whereas only 9% of the zip codes in cluster 3 and none of the zip codes in cluster 4 (highest prices) are rural (see Table 11).

Figure 14

2024 Geographic Clusters of Child Care Prices for Center and Large Home-Based Care



For larger view of map, see page 83.

^{xxvi} Since smoothing was not used in the 2024 final models, there are some zip codes in higher prices clusters that are surrounded by lower price clusters (or vice versa). Since these zip codes tend to be in less populated areas of the state and are based on a small number of providers, results should be interpreted with caution.

Table 11

**Percent of Zip Codes in Each Center Cluster
by Urban and Rural Distinction**

	Cluster 1	Cluster 2	Cluster 3	Cluster 4	Oregon
Urban	26%	58%	91%	100%	45%
Rural	74%	42%	9%	0%	55%
Total	100%	100%	100%	100%	100%

For complete list of cluster values for each zip code by county, see [Appendix F](#).

CONCLUSIONS

The purpose of the 2024 Oregon Market Price Study is to examine statewide and geographic patterns in the prices charged by facilities by age of child served, type of care, and pricing modes (hourly, monthly, daily, weekly). Prices are what providers share as the rates that they charge families and are distinct from other financial aspects of running a child care business, such as program revenue/income or the costs/expenses involved in running a child care program. This report is focused on the prices families encounter when looking to purchase child care from the priced market. The following summarizes key conclusions from the 2024 Market Price Study^{xxvii}:

Prices vary by type of care and age of child served. Prices are the highest for center care, followed by large home-based care, and small home-based care. Additionally, within each type of care infant prices are the highest, followed by toddler, preschool, and school age care. School-age prices should be interpreted with caution given questions about the validity and reliability of the data collected.

Statewide trends over the past 24 years show prices have consistently increased across all care types. Over the past 24 years, nominal and inflation-adjusted prices for all types of care and age groups have increased, with the percentage increase in statewide prices greater in center care than in large and small home-based care.

Between 2022 and 2024, monthly prices increased across all care types. Center facilities saw the largest overall price increase (+11% for infants, toddlers, and preschoolers), followed by large home (+7-15% across age groups), and then small home-based (+7-9% across age groups). After adjusting prices for inflation^{xxviii}, the price of care in center-based care and large home-based preschool care just outpaced inflation, while the price of care in small home-based facilities and large home-based infant and toddler care generally kept up with inflation. Prices saw smaller increases between 2022 and 2024 compared to the two years prior (from 2020 to 2022) when growth in prices was larger.

Geographic price cluster analyses identified distinct child care markets across Oregon zip codes. The market price study validates the existence of three different small home-based care and four different center and large home-based care types of submarkets in Oregon. The clusters were produced using a statistical method that identifies potential for price clusters that occur in the data and provides a systematic way to find the optimal natural breaks between clusters.

For each care type, the highest numbered geographic cluster (i.e., most expensive prices) generally exceeds the state average prices. This finding suggests the average monthly prices are most in line with the second most expensive geographic price area. Overall, the cluster analysis showed child care prices to be generally lower in rural areas of the state and higher in the Portland metropolitan area, parts of Benton, Clatsop, Columbia, Deschutes, Hood River, Jackson, Lane, Polk, and Yamhill counties.

CCR&R data continues to provide a reliable and cost-effective source of data for statewide market price studies. The statewide CCR&R database remains the most feasible source of data for the child care market price studies. First, the database is sufficiently large and comprehensive to support analysis of statewide market prices. Second, it is representative of the child care priced market. Third, it is a convenient, inexpensive, and accessible data source. Finally, the CCR&Rs and Central Coordination

^{xxvii} Prices current as of December 2024.

^{xxviii} The rate of inflation from 2022 to 2024 was 7%.

continue to maintain a high standard for completeness and currency of both price and desired capacity data. Oregon's strong and representative response rate for the Market Price Study can be largely attributed to the skilled efforts of the CCR&Rs embedded within Oregon communities, as well as to Central Coordination's efforts to support this activity with training and technical assistance.

CCR&Rs should continue to collect price information in the mode(s) that reflect how facilities charge, and more clearly define full and part-time care offerings. The prices for the 2024 Market Price Study were reported for four independent, non-equivalent price samples. Having only one common mode of reporting prices would simplify reporting and facilitate comparison of prices. However, in reality, facilities charge in four different modes (hourly, daily, weekly, monthly) that represent different child care markets and should be reflected in the database and in the market price report. To strengthen this work, future studies should consider how to more clearly define full- and part-time care in the reporting system, especially for school-age children.

Monthly pricing is the most common mode (hourly, daily, weekly, monthly) used by facilities to charge private pay families. Identifying the predominant modes facilities charge by type of care is important not only for understanding the child care market but also because it produces the largest sample size in which to conduct the geographic price analysis. For center and large home-based care, Monthly has been the most common mode reported by facilities for all age groups over time. For small home-based care, hourly was the most predominant mode facilities used to charge parents through 2018. In 2020, both hourly and monthly were used about equally. In 2022, monthly became the most predominant mode used. This is likely because of many factors, including more home-based care using monthly pricing structures and the continued loss of small family providers from the supply, which may have been those who were more likely to charge hourly. It will be important to continue to track these trends in future studies.

REFERENCES

1. Weber, R. B., Pratt, M., Houston, L. *Child Care Subsidy Policies and Outcomes: Oregon Case Study*. Corvallis, OR: Oregon Child Care Research Partnership, Oregon State University, December 2022.
2. Emlen, A. C. *Analysis of Child Care Rates in Oregon*. Report for Adult & Family Services Division, Oregon Department of Human Resources. Portland, OR: Arthur Emlen & Associates, Inc. in cooperation with the Regional Research Institute for Human Services, Portland State University, March, 1990.
3. Emlen, A. C. *The 1992 Oregon Child-Care Rates*. Report for Adult & Family Services Division, Oregon Department of Human Resources. Portland, OR: Arthur Emlen & Associates, Inc. in cooperation with the Regional Research Institute for Human Services, Portland State University, September 30, 1992.
4. Emlen, A. C. *Market Rate, 1994: Sampling the Price of Child Care in Oregon*. Report for Adult and Family Services Division, Oregon Department of Human Resources. Portland, OR: Arthur Emlen & Associates, Inc. in cooperation with the Regional Research Institute for Human Services, Portland State University, April, 1995.
5. Tvedt, K., & Emlen, A. C. *1999 Oregon Child Care Market Rate Study*. Report for Adult and Family Services Division, Oregon Department of Human Resources. Portland, OR: Regional Research Institute for Human Services, Portland State University, March, 1999.
6. Grobe, D., & Pratt, C. C. *2000 Oregon Child Care Market Rate Study*. Report for Adult and Family Services Division, Oregon Department of Human Resources. Corvallis, OR: Family Policy Program, Oregon State University, September, 2000.
7. Grobe, D., Pratt, C. C., & Weber, R. B. *2002 Oregon Child Care Market Rate Study*. Report for Oregon Department of Human Services. Corvallis, OR: Family Policy Program, Oregon State University, January, 2003.
8. Grobe, Deana, Pratt, Clara C., & Weber, Roberta B. *2004 Oregon Child Care Market Rate Study*. Report for Oregon Department of Human Services. Corvallis, OR: Family Policy Program, Oregon State University, August, 2004.
9. Grobe, D., & Weber, R. B. & Pratt, C. C. *2006 Oregon Child Care Market Rate Study*. Report for Oregon Department of Human Services. Corvallis, OR: Family Policy Program, Oregon State University, August, 2006.
10. Grobe, D., & Weber, R. B. *2008 Oregon Child Care Market Price Study*. Report for Oregon Department of Human Services. Corvallis, OR: Family Policy Program, Oregon State University, August, 2008.

11. Grobe, D., & Weber, R. B. *2010 Oregon Child Care Market Price Study*. Report for Oregon Department of Human Services. Corvallis, OR: Family Policy Program, Oregon State University, October, 2010.
12. Grobe, D., & Weber, R. B. *2012 Oregon Child Care Market Price Study*. Report for Oregon Department of Human Services. Corvallis, OR: Family Policy Program, Oregon State University, October, 2012.
13. Grobe, D., & Weber, R. B. *2014 Oregon Child Care Market Price Study*. Report for Oregon Department of Human Services. Corvallis, OR: Family Policy Program, Oregon State University, October, 2014.
14. Grobe, D., & Weber, R. B. *2016 Oregon Child Care Market Price Study*. Report for Oregon Department of Human Services. Corvallis, OR: Family Policy Program, Oregon State University, October, 2016.
15. Grobe, D., & Weber, R. B. *2018 Oregon Child Care Market Price Study*. Report for Oregon Department of Human Services and Oregon Early Learning Division. Corvallis, OR: Family Policy Program, Oregon State University, March, 2018.
16. Pratt, M., Houston, L., Sektnan, M. *2020 Oregon Child Care Market Price Study*. Report for Oregon Department of Human Services and Oregon Early Learning Division. Corvallis, OR: Oregon Child Care Research Partnership, Oregon State University, March, 2021.
17. Pratt, M., Sektnan, M., Houston, L. *2022 Oregon Child Care Market Price Study*. Report for Oregon Department of Human Services and Oregon Early Learning Division. Corvallis, OR: Oregon Child Care Research Partnership, Oregon State University, March, 2023.
18. Grobe, D., Weber, R. B., Davis, E., E., Kreader, J. L., & Pratt, Clara C. *Study of Market Prices: Validating Child Care Market Rate Surveys*. Technical Report. Corvallis, OR: Family Policy Program, Oregon State University, September, 2008.
19. Pratt, C., Katzev, A., Ozretich, R. Henderson, T, & McGuigan, W. *Building Results III: Measuring Outcomes for Oregon's Children, Youth, and Families*. Prepared for The Oregon Commission on Children and Families, January, 1998.
20. Child Care and Development Fund; Final Rule. 45 CFR Parts 98 and 99, § 98.43, Comments. July 24, 1998.

Appendices

APPENDIX A

Glossary

Age of care—age of child receiving care; the four different age groups are *infant* (0-24 months), *toddler* (2-3 years old), *preschool age* (3 - 5 years old), and *school age* (6 years old and up)

Child care facility prices—facility prices for care as reported to local Child Care Resource & Referral

Child care slots—represents the cost per child care slot

Total facility capacity—maximum number of children desired by the facility

Total age group capacity—total capacity for a given age group (infants, toddlers, preschool, school age)

Cost of care—facilities' costs to provide child care that is often greater than the price charged to parents

Employment Related Day Care (ERDC)— Oregon's subsidy program administered by the Oregon Department of Early Learning and Care. ERDC helps families who are working, in school, or receiving Temporary Assistance for Needy Families (TANF) pay for child care.

Family copay – the portion of the child care fee paid by parents who are receiving Employment Related Day Care (ERDC) subsidies

Market price or prices— prices that are set in the priced child care market by facilities

Priced child care market— Facilities within the priced child care market have two characteristics: (1) they charge parents a price, and (2) the price is established through an arm's length transaction. In an arm's length transaction the buyer and seller do not have a prior relationship or shared membership that is likely to affect the price charged. The priced market does *not* include facilities who limit their care to persons they know, as is commonly the case with family or friend caregivers.

Pricing modes—the various ways prices can be reported: hourly, daily, weekly, monthly

75th Percentile—the price level at which 75% of child care slots may be purchased

Licensed rate maximums—the Employment Related Day Care maximum subsidy rates are the highest amount a provider will be paid for a child on subsidy. Current rates have been in effect since January 2024

Type of care—care setting or facility

Small home-based care—provided in the provider's home; small group of children; includes licensed registered family and exempt family providers

Center care—full or part-time care and education; provided by caregivers/teachers always located in building other than home; includes both licensed certified centers and exempt centers

Large home-based care—one or more caregivers; no more than 16 children at any one time; care provided in home setting

APPENDIX B
Statewide Prices

Table B1. 2024 Statewide Prices for Small Home-Based Care

	CHILD CARE FACILITIES (Unweighted)				CHILD CARE SLOTS (Weighted by Capacity)			
	Hourly	Daily	Weekly	Monthly	Hourly	Daily	Weekly	Monthly
Infant	N=272	N=112	N=56	N=485	N=2463	N=962	N=495	N=4376
90 th	\$9.00	\$70	\$375	\$1,350	\$9.00	\$70	\$360	\$1,350
80 th	\$7.00	\$60	\$320	\$1,200	\$7.00	\$60	\$320	\$1,200
75 th	\$7.00	\$60	\$300	\$1,157	\$7.00	\$60	\$300	\$1,157
60 th	\$6.00	\$50	\$275	\$1,000	\$6.00	\$50	\$275	\$1,000
50 th	\$5.00	\$50	\$250	\$900	\$5.25	\$50	\$250	\$900
25 th	\$4.50	\$40	\$201	\$833	\$4.67	\$40	\$200	\$833
10 th	\$4.00	\$30	\$180	\$750	\$4.00	\$30	\$180	\$750
Toddler	N=313	N=141	N=63	N=564	N=2780	N=1186	N=536	N=4899
90 th	\$8.00	\$70	\$350	\$1,200	\$8.00	\$70	\$350	\$1,200
80 th	\$7.00	\$60	\$300	\$1,068	\$7.00	\$60	\$300	\$1,070
75 th	\$6.33	\$55	\$280	\$1,050	\$6.33	\$55	\$280	\$1,050
60 th	\$5.50	\$50	\$260	\$945	\$5.50	\$50	\$260	\$945
50 th	\$5.00	\$45	\$250	\$850	\$5.00	\$45	\$250	\$850
25 th	\$4.33	\$37	\$200	\$783	\$4.33	\$38	\$200	\$783
10 th	\$3.50	\$30	\$175	\$700	\$3.50	\$30	\$175	\$700
Preschool	N=346	N=142	N=64	N=605	N=3020	N=1194	N=549	N=5232
90 th	\$7.00	\$65	\$350	\$1,150	\$7.00	\$65	\$350	\$1,150
80 th	\$6.00	\$55	\$300	\$1,000	\$6.00	\$55	\$280	\$1,000
75 th	\$6.00	\$50	\$280	\$967	\$6.00	\$50	\$280	\$967
60 th	\$5.00	\$50	\$280	\$967	\$5.00	\$50	\$250	\$900
50 th	\$5.00	\$45	\$240	\$800	\$5.00	\$45	\$240	\$800
25 th	\$4.00	\$35	\$200	\$768	\$4.17	\$36	\$200	\$768
10 th	\$3.20	\$30	\$170	\$650	\$3.50	\$30	\$170	\$650
School Age	N=178	N=60	N=23	N=141	N=1524	N=553	N=208	N=1273
School Year 90 th	\$8.00	\$60	\$314	\$900	\$8.00	\$60	\$314	\$900
80 th	\$6.00	\$50	\$250	\$760	\$6.00	\$50	\$250	\$780
75 th	\$5.67	\$45	\$250	\$719	\$5.79	\$45	\$250	\$719
60 th	\$5.00	\$35	\$200	\$675	\$5.00	\$35	\$200	\$675
50 th	\$4.50	\$30	\$163	\$627	\$4.50	\$30	\$163	\$625
25 th	\$4.11	\$22	\$100	\$485	\$4.33	\$20	\$100	\$485
10 th	\$3.75	\$15	\$65	\$330	\$4.00	\$15	\$65	\$300
School Age	N=68	N=37	N=18	N=191	N=566	N=327	N=155	N=1718
Summer 90 th	\$7.00	\$70	\$380	\$990	\$7.00	\$70	\$380	\$1,000
80 th	\$6.00	\$60	\$280	\$867	\$5.83	\$60	\$280	\$867
75 th	\$5.67	\$50	\$275	\$850	\$5.67	\$55	\$275	\$850
60 th	\$5.00	\$45	\$217	\$780	\$5.00	\$45	\$225	\$783
50 th	\$4.50	\$40	\$209	\$750	\$4.67	\$40	\$217	\$750
25 th	\$4.00	\$35	\$175	\$719	\$4.00	\$36	\$198	\$719
10 th	\$3.15	\$30	\$100	\$600	\$3.50	\$30	\$100	\$600

Facility prices represent average prices at the facility level. Slot prices were calculated by weighting the reported prices by total capacity (small home) or age group capacity (centers and large home). Prices current as of December 2024

APPENDIX B (continued)

Table B2. 2024 Statewide Prices for Center Care

CHILD CARE FACILITIES (Unweighted)					CHILD CARE SLOTS (Weighted by Capacity)			
	Hourly	Daily	Weekly	Monthly	Hourly	Daily	Weekly	Monthly
Infant	N=18	N=22	N=19	N=301	N=154	N=288	N=294	N=3887
90 th	\$13.07	\$140	\$517	\$2,247	\$8.75	\$140	\$517	\$2,294
80 th	\$8.75	\$112	\$470	\$2,039	\$8.25	\$119	\$490	\$2,150
75 th	\$8.25	\$99	\$450	\$1,997	\$8.00	\$119	\$470	\$2,060
60 th	\$6.50	\$89	\$420	\$1,800	\$6.50	\$92	\$430	\$1,955
50 th	\$5.88	\$85	\$380	\$1,640	\$5.75	\$90	\$400	\$1,768
25 th	\$5.00	\$65	\$305	\$1,350	\$5.50	\$65	\$305	\$1,370
10 th	\$5.00	\$50	\$240	\$1,075	\$5.00	\$50	\$240	\$1,089
Toddler	N=27	N=28	N=25	N=373	N=226	N=278	N=320	N=5473
90 th	\$15.00	\$134	\$490	\$2,100	\$12.55	\$140	\$490	\$2,180
80 th	\$12.55	\$89	\$425	\$1,950	\$11.00	\$89	\$425	\$2,045
75 th	\$12.00	\$89	\$420	\$1,923	\$9.00	\$89	\$424	\$1,995
60 th	\$8.75	\$78	\$366	\$1,670	\$7.50	\$78	\$380	\$1,840
50 th	\$7.50	\$75	\$336	\$1,495	\$6.00	\$75	\$361	\$1,670
25 th	\$5.00	\$61	\$300	\$1,195	\$5.00	\$70	\$284	\$1,260
10 th	\$4.75	\$44	\$245	\$950	\$4.75	\$45	\$225	\$965
Preschool	N=44	N=41	N=34	N=537	N=1052	N=1037	N=1272	N=18179
90 th	\$12.00	\$85	\$365	\$1,710	\$11.00	\$105	\$378	\$1,790
80 th	\$9.50	\$75	\$335	\$1,525	\$8.75	\$75	\$351	\$1,600
75 th	\$8.38	\$72	\$325	\$1,500	\$7.85	\$72	\$335	\$1,540
60 th	\$6.55	\$68	\$300	\$1,258	\$7.00	\$68	\$324	\$1,400
50 th	\$5.88	\$65	\$285	\$1,125	\$6.00	\$65	\$310	\$1,241
25 th	\$4.63	\$45	\$240	\$860	\$4.75	\$45	\$250	\$935
10 th	\$4.00	\$40	\$204	\$565	\$4.00	\$29	\$225	\$675
School Age	N=55	N=61	N=63	N=243	N=1220	N=2116	N=2938	N=9054
School Year 90 th	\$14.25	\$57	\$190	\$915	\$18.00	\$65	\$199	\$650
80 th	\$10.00	\$52	\$140	\$650	\$14.25	\$57	\$140	\$450
75 th	\$10.00	\$40	\$140	\$556	\$10.67	\$57	\$140	\$440
60 th	\$9.35	\$30	\$130	\$440	\$10.00	\$39	\$130	\$415
50 th	\$8.00	\$30	\$105	\$440	\$9.00	\$35	\$105	\$350
25 th	\$5.27	\$30	\$80	\$285	\$5.75	\$30	\$80	\$265
10 th	\$4.50	\$20	\$75	\$240	\$4.50	\$25	\$75	\$200
School Age Summer	N=15	N=15	N=56	N=106	N=428	N=501	N=2312	N=2281
90 th	\$10.00	\$170	\$378	\$1,762	\$24.00	\$170	\$351	\$1,740
80 th	\$8.86	\$130	\$325	\$1,500	\$9.72	\$160	\$275	\$1,455
75 th	\$8.00	\$100	\$278	\$1,265	\$9.72	\$160	\$256	\$1,200
60 th	\$6.75	\$58	\$250	\$1,050	\$9.72	\$45	\$210	\$990
50 th	\$5.75	\$45	\$210	\$939	\$9.72	\$45	\$210	\$927
25 th	\$4.50	\$43	\$200	\$800	\$5.75	\$30	\$155	\$800
10 th	\$4.50	\$30	\$155	\$629	\$4.50	\$30	\$100	\$629

Facility prices represent average prices at the facility level. Slot prices were calculated by weighting the reported prices by total capacity (small home) or age group capacity (centers and large home). *Prices current as of December 2024.*

APPENDIX B (continued)

Table B3. 2024 Statewide Prices for Large Home-Based Care

	CHILD CARE FACILITIES (Unweighted)				CHILD CARE SLOTS (Weighted by Capacity)			
	Hourly	Daily	Weekly	Monthly	Hourly	Daily	Weekly	Monthly
Infant	N=65	N=51	N=41	N=474	N=188	N=148	N=160	N=1380
90 th	\$12.00	\$94	\$455	\$1,890	\$14.00	\$99	\$495	\$2,000
80 th	\$9.00	\$80	\$450	\$1,809	\$10.00	\$95	\$452	\$1,810
75 th	\$8.00	\$75	\$450	\$1,809	\$9.00	\$94	\$450	\$1,809
60 th	\$7.33	\$70	\$400	\$1,779	\$7.33	\$75	\$450	\$1,809
50 th	\$7.00	\$60	\$350	\$1,550	\$7.00	\$70	\$450	\$1,650
25 th	\$5.92	\$47	\$250	\$1,085	\$6.00	\$50	\$325	\$1,200
10 th	\$5.00	\$40	\$200	\$1,000	\$5.00	\$40	\$210	\$1,067
Toddler	N=77	N=59	N=49	N=570	N=308	N=227	N=234	N=2283
90 th	\$12.00	\$75	\$450	\$1,800	\$12.00	\$90	\$450	\$1,810
80 th	\$9.00	\$70	\$420	\$1,675	\$9.00	\$75	\$420	\$1,675
75 th	\$8.00	\$70	\$400	\$1,675	\$9.00	\$70	\$400	\$1,675
60 th	\$7.33	\$57	\$335	\$1,568	\$7.33	\$60	\$335	\$1,600
50 th	\$6.00	\$55	\$325	\$1,400	\$6.57	\$55	\$335	\$1,440
25 th	\$5.25	\$45	\$250	\$1,008	\$5.13	\$47	\$312	\$1,008
10 th	\$4.50	\$40	\$180	\$900	\$4.50	\$40	\$190	\$900
Preschool	N=78	N=62	N=41	N=618	N=418	N=356	N=267	N=3978
90 th	\$10.25	\$75	\$400	\$1,550	\$11.00	\$80	\$400	\$1,600
80 th	\$8.00	\$70	\$367	\$1,466	\$8.75	\$70	\$367	\$1,500
75 th	\$7.33	\$66	\$350	\$1,466	\$8.00	\$70	\$350	\$1,466
60 th	\$7.00	\$55	\$325	\$1,400	\$7.00	\$55	\$325	\$1,404
50 th	\$6.00	\$50	\$300	\$1,200	\$6.00	\$52	\$300	\$1,275
25 th	\$5.00	\$45	\$225	\$933	\$5.50	\$46	\$250	\$933
10 th	\$4.00	\$35	\$175	\$850	\$4.00	\$37	\$180	\$815
School Age	N=54	N=24	N=11	N=115	N=152	N=71	N=30	N=323
School Year 90 th	\$9.50	\$60	\$300	\$1,150	\$9.50	\$60	\$250	\$1,150
80 th	\$7.67	\$55	\$250	\$1,100	\$7.67	\$50	\$220	\$1,000
75 th	\$7.67	\$45	\$250	\$1,000	\$7.67	\$40	\$120	\$900
60 th	\$6.00	\$40	\$120	\$857	\$6.00	\$40	\$120	\$800
50 th	\$6.00	\$37	\$120	\$800	\$5.91	\$30	\$120	\$750
25 th	\$5.50	\$23	\$80	\$600	\$5.25	\$20	\$80	\$600
10 th	\$4.50	\$15	\$75	\$375	\$4.33	\$15	\$50	\$375
School Age Summer	N=19	N=14	N=9	N=136	N=54	N=36	N=27	N=385
90 th	\$9.50	\$75	\$400	\$1,300	\$8.00	\$70	\$400	\$1,200
80 th	\$7.67	\$70	\$350	\$1,150	\$7.67	\$70	\$320	\$1,150
75 th	\$6.00	\$70	\$320	\$1,150	\$6.00	\$60	\$320	\$1,150
60 th	\$5.83	\$60	\$300	\$1,100	\$5.83	\$50	\$250	\$1,050
50 th	\$5.83	\$50	\$250	\$950	\$5.83	\$50	\$250	\$900
25 th	\$5.00	\$40	\$150	\$800	\$5.00	\$39	\$150	\$800
10 th	\$4.00	\$30	\$120	\$800	\$4.00	\$28	\$120	\$750

Facility prices represent average prices at the facility level. Slot prices were calculated by weighting the reported prices by total capacity (small home) or age group capacity (centers and large home). Prices current as of December 2024.

APPENDIX C

Median Prices by County

Table C1. 2024 Median Monthly Prices by County and Age Group for Small Home-Based Care

County	Infant			Toddler		
	# of Facilities Reporting	# of Infant Slots	Median Monthly Price	# of Facilities Reporting	# of Toddler Slots	Median Monthly Price
Baker	7	9	\$833	9	20	\$783
Benton	6	11	\$991	7	16	\$925
Clackamas	20	35	\$1,179	28	75	\$1,075
Clatsop	3	4	\$833	3	5	\$783
Columbia	9	14	\$1,100	9	17	\$1,000
Coos	20	33	\$833	22	43	\$783
Crook	1	2	^	1	2	^
Curry	3	5	\$950	3	7	\$900
Deschutes	22	39	\$1,100	25	62	\$975
Douglas	20	23	\$833	29	45	\$783
Gilliam	1	1	^	1	4	^
Grant	0	0	-	0	0	-
Harney	0	0	-	0	0	-
Hood River	1	1	^	1	1	^
Jackson	24	41	\$833	25	54	\$783
Jefferson	2	4	\$833	3	12	\$783
Josephine	5	7	\$800	7	20	\$700
Klamath	12	12	\$833	15	20	\$783
Lake	0	0	-	0	0	-
Lane	40	66	\$1,157	48	105	\$1,050
Lincoln	3	4	\$800	5	8	\$800
Linn	26	42	\$833	25	44	\$783
Malheur	3	4	\$833	2	3	\$742
Marion	82	140	\$833	91	192	\$783
Morrow	0	0	-	2	4	\$975
Multnomah	50	91	\$1,200	64	161	\$1,050
Polk	13	23	\$1,000	15	39	\$925
Sherman	0	0	-	0	0	-
Tillamook	3	5	\$1,000	3	9	\$1,000
Umatilla	15	26	\$833	24	50	\$783
Union	15	27	\$791	15	28	\$750
Wallowa	2	4	\$750	2	4	\$750
Wasco	7	11	\$833	7	15	\$783
Washington	62	106	\$1,190	65	150	\$1,100
Wheeler	0	0	-	0	0	-
Yamhill	8	14	\$1,000	8	17	\$875
Oregon	485	804	\$900	564	1,232	\$850

continued on next page

Table C1. Median Monthly Prices for Small Home-Based (continued)

County	Preschool			School Age School Year		
	# of Facilities Reporting	# of Preschool Slots	Median Monthly Price	# of Facilities Reporting	# of School Age Slots	Median Monthly Price
Baker	11	36	\$768	3	8	\$539
Benton	8	19	\$875	4	8	\$525
Clackamas	34	118	\$967	6	29	\$540
Clatsop	3	8	\$768	1	4	^
Columbia	10	30	\$967	3	5	\$650
Coos	23	68	\$768	3	12	\$500
Crook	1	3	^	0	0	-
Curry	3	6	\$850	0	0	-
Deschutes	25	74	\$900	4	8	\$550
Douglas	30	99	\$768	23	69	\$650
Gilliam	1	1	^	0	0	-
Grant	0	0	-	0	0	-
Harney	0	0	-	0	0	-
Hood River	1	3	^	0	0	-
Jackson	28	86	\$768	3	12	\$530
Jefferson	3	8	\$768	0	0	-
Josephine	8	32	\$690	0	0	-
Klamath	15	60	\$768	10	39	\$629
Lake	0	0	-	0	0	-
Lane	49	115	\$967	6	18	\$650
Lincoln	5	9	\$800	1	4	^
Linn	28	66	\$768	3	11	\$539
Malheur	5	21	\$650	1	3	^
Marion	96	300	\$768	15	44	\$576
Morrow	2	7	\$875	1	0	^
Multnomah	65	184	\$967	7	22	\$900
Polk	16	47	\$888	4	11	\$375
Sherman	0	0	-	0	0	-
Tillamook	3	7	\$1,000	0	0	-
Umatilla	24	68	\$768	12	20	\$719
Union	17	47	\$750	7	18	\$675
Wallowa	2	4	\$750	2	4	\$210
Wasco	7	19	\$768	1	2	^
Washington	73	204	\$1,000	16	51	\$870
Wheeler	0	0	-	0	0	-
Yamhill	9	30	\$850	5	7	\$550
Oregon	605	1,779	\$800	141	409	\$627

continued on next page

Table C1. Median Monthly Prices for Small Home-Based (continued)

School Age Summer			
County	# of Facilities Reporting	# of Preschool Slots	Median Monthly Price
Baker	6	17	\$719
Benton	5	9	\$800
Clackamas	8	37	\$900
Clatsop	1	4	^
Columbia	2	5	\$684
Coos	2	8	\$970
Crook	0	0	-
Curry	0	0	-
Deschutes	9	15	\$800
Douglas	21	57	\$719
Gilliam	0	0	-
Grant	0	0	-
Harney	0	0	-
Hood River	0	0	-
Jackson	8	27	\$775
Jefferson	2	4	\$719
Josephine	2	5	\$475
Klamath	12	47	\$719
Lake	0	0	-
Lane	2	8	\$784
Lincoln	2	4	\$750
Linn	15	47	\$719
Malheur	0	0	-
Marion	34	96	\$719
Morrow	1	4	^
Multnomah	15	46	\$900
Polk	9	22	\$725
Sherman	0	0	-
Tillamook	0	0	-
Umatilla	13	27	\$750
Union	5	10	\$700
Wallowa	2	4	\$750
Wasco	2	6	\$581
Washington	10	33	\$995
Wheeler	0	0	-
Yamhill	3	9	\$719
Oregon	191	551	\$750

Small home-based care includes registered family homes (n = 922) and exempt family child care who receive referrals from Find Child Care Oregon (n = 79). Prices current as of December 2024.

A dash reflects no price data for type of care and age group in a particular county. A ^ indicates prices not reported if county only represented by one facility. The number of facilities are those that are part of the priced market and reported a full-time price to the CCR&R; this does not reflect all child care facilities and slots in a given county. Prices are facility level (unweighted) prices.

APPENDIX C (continued)

Table C2. 2024 Median Monthly Prices by County and Age Group for Center Care

County	Infant			Toddler		
	# of Facilities Reporting	# of Infant Slots	Median Monthly Price	# of Facilities Reporting	# of Toddler Slots	Median Monthly Price
Baker	1	4	^	1	3	^
Benton	10	115	\$1,597	11	161	\$1,575
Clackamas	39	496	\$1,720	50	902	\$1,574
Clatsop	5	49	\$1,350	6	71	\$1,275
Columbia	5	38	\$1,085	5	46	\$1,085
Coos	4	32	\$1,350	5	65	\$1,260
Crook	2	12	\$1,300	2	15	\$968
Curry	0	0	-	0	0	-
Deschutes	26	369	\$1,670	36	453	\$1,528
Douglas	3	38	\$1,350	6	66	\$1,023
Gilliam	2	10	\$1,209	2	10	\$1,134
Grant	1	8	^	1	5	^
Harney	0	0	-	0	0	-
Hood River	3	14	\$1,200	5	32	\$1,200
Jackson	8	88	\$1,403	11	119	\$1,302
Jefferson	3	56	\$920	3	34	\$920
Josephine	8	77	\$1,100	9	100	\$1,083
Klamath	4	46	\$1,173	5	73	\$1,060
Lake	0	0	-	0	0	-
Lane	26	307	\$1,771	35	480	\$1,633
Lincoln	2	10	\$1,150	2	16	\$1,050
Linn	3	45	\$1,240	6	64	\$1,121
Malheur	3	35	\$1,100	3	40	\$900
Marion	21	258	\$1,350	23	306	\$1,199
Morrow	1	8	^	1	10	^
Multnomah	48	832	\$2,005	62	1,021	\$1,944
Polk	8	81	\$1,518	10	121	\$1,210
Sherman	0	0	-	0	0	-
Tillamook	1	8	^	1	8	^
Umatilla	6	67	\$1,075	7	112	\$800
Union	0	0	-	0	0	-
Wallowa	0	0	-	0	0	-
Wasco	1	8	^	1	8	^
Washington	48	622	\$2,048	54	1010	\$1,968
Wheeler	0	0	-	0	0	-
Yamhill	9	154	\$1,548	10	122	\$1,347
Oregon	301	3,887	\$1,640	373	5,473	\$1,495

continued on next page

Table C2. Median Monthly Prices for Centers (continued)

County	Preschool			School Age School Year		
	# of Facilities Reporting	# of Preschool Slots	Median Monthly Price	# of Facilities Reporting	# of School Age Slots	Median Monthly Price
Baker	2	10	\$846	0	0	-
Benton	15	499	\$1,175	3	87	\$340
Clackamas	63	2,570	\$1,350	21	734	\$400
Clatsop	13	330	\$900	1	0	^
Columbia	9	260	\$1,050	1	11	^
Coos	9	241	\$600	1	1	^
Crook	5	208	\$750	1	100	^
Curry	1	12	^	0	0	-
Deschutes	48	1,536	\$1,225	27	1440	\$265
Douglas	9	227	\$862	4	45	\$608
Gilliam	2	22	\$977	0	0	-
Grant	2	24	\$468	0	0	-
Harney	0	0	-	1	60	^
Hood River	8	164	\$1,170	0	0	-
Jackson	25	716	\$940	21	1249	\$415
Jefferson	3	199	\$880	0	0	-
Josephine	14	329	\$860	3	265	\$550
Klamath	5	177	\$895	3	109	\$390
Lake	1	28	^	0	0	-
Lane	49	1,650	\$1,150	42	1706	\$440
Lincoln	8	177	\$800	2	60	\$270
Linn	12	350	\$905	5	350	\$350
Malheur	7	147	\$495	2	28	\$338
Marion	38	1,295	\$927	33	805	\$440
Morrow	2	45	\$558	1	4	^
Multnomah	79	3,181	\$1,550	25	906	\$440
Polk	10	182	\$1,040	8	206	\$410
Sherman	1	20	^	0	0	-
Tillamook	2	54	\$748	1	0	^
Umatilla	10	288	\$723	3	184	\$410
Union	4	95	\$313	0	0	-
Wallowa	0	0	-	0	0	-
Wasco	2	40	\$1,075	1	10	^
Washington	63	2,680	\$1,600	27	577	\$958
Wheeler	1	9	^	0	0	-
Yamhill	15	414	\$1,040	6	117	\$650
Oregon	537	18,179	\$1,125	243	9054	\$440

continued on next page

Table C2. Median Monthly Prices for Centers (continued)

County	School Age Summer		Median Monthly Price
	# of Facilities Reporting	# of Preschool Slots	
Baker	0	0	-
Benton	0	0	-
Clackamas	7	161	\$1,265
Clatsop	0	0	-
Columbia	2	51	\$834
Coos	1	1	^
Crook	1	17	^
Curry	0	0	-
Deschutes	11	99	\$1,050
Douglas	2	40	\$831
Gilliam	0	0	-
Grant	0	0	-
Harney	1	60	^
Hood River	0	0	-
Jackson	5	40	\$1,020
Jefferson	0	0	-
Josephine	1	0	^
Klamath	0	0	-
Lake	0	0	-
Lane	12	312	\$1,062
Lincoln	1	10	^
Linn	0	0	-
Malheur	2	28	\$588
Marion	22	550	\$800
Morrow	2	39	\$475
Multnomah	10	264	\$1,163
Polk	3	120	\$800
Sherman	0	0	-
Tillamook	1	0	^
Umatilla	4	117	\$839
Union	1	30	^
Wallowa	0	0	-
Wasco	1	10	^
Washington	14	305	\$1,751
Wheeler	0	0	-
Yamhill	2	27	\$908
Oregon	106	2281	\$939

Center care includes licensed certified centers (n = 690) and exempt child care centers (n = 193). Prices current as of December 2024.

A dash reflects no price data for type of care and age group in a particular county. A ^ indicates prices not reported if county only represented by one facility. The number of facilities are those that are part of the priced market and reported a full-time price to the CCR&R; this does not reflect all child care facilities and slots in a given county. Prices are facility level (unweighted) prices.

APPENDIX C (continued)

Table C3. 2024 Median Monthly Prices by County and Age Group for Large Home-Based Care

County	Infant			Toddler		
	# of Facilities Reporting	# of Infant Slots	Median Monthly Price	# of Facilities Reporting	# of Toddler Slots	Median Monthly Price
Baker	0	0	-	0	0	-
Benton	6	20	\$1,373	7	31	\$1,100
Clackamas	26	123	\$1,809	31	140	\$1,525
Clatsop	2	7	\$1,300	3	16	\$1,100
Columbia	3	10	\$1,200	6	33	\$1,054
Coos	2	5	\$1,084	3	9	\$1,000
Crook	2	3	\$1,170	2	14	\$1,020
Curry	1	2	^	0	0	-
Deschutes	27	106	\$1,300	31	133	\$1,200
Douglas	6	13	\$1,071	7	23	\$1,008
Gilliam	0	0	-	0	0	-
Grant	0	0	-	0	0	-
Harney	0	0	-	0	0	-
Hood River	5	19	\$1,500	5	26	\$1,500
Jackson	17	38	\$1,100	27	101	\$1,008
Jefferson	0	0	-	0	0	-
Josephine	6	13	\$1,068	8	26	\$1,004
Klamath	8	19	\$1,077	10	26	\$1,008
Lake	0	0	-	0	0	-
Lane	51	124	\$1,809	62	257	\$1,675
Lincoln	3	7	\$1,000	5	21	\$1,008
Linn	13	31	\$1,067	17	66	\$1,008
Malheur	1	1	^	2	3	\$950
Marion	68	169	\$1,067	76	264	\$1,000
Morrow	0	0	-	0	0	-
Multnomah	88	308	\$1,809	110	478	\$1,675
Polk	17	45	\$1,600	19	80	\$1,500
Sherman	1	4	^	1	4	^
Tillamook	2	6	\$1,209	2	8	\$1,104
Umatilla	11	21	\$1,000	13	48	\$950
Union	1	2	^	1	2	^
Wallowa	0	0	-	0	0	-
Wasco	2	6	\$1,134	3	10	\$1,000
Washington	93	252	\$1,800	104	406	\$1,610
Wheeler	0	0	-	0	0	-
Yamhill	12	26	\$1,125	15	58	\$1,008
Oregon	474	1,380	\$1,550	570	2,283	\$1,400

continued on next page

Table C3. Median Monthly Prices for Large Home-Based (continued)

County	Preschool			School Age School Year		
	# of Facilities Reporting	# of Preschool Slots	Median Monthly Price	# of Facilities Reporting	# of School Age Slots	Median Monthly Price
Baker	1	16	^	0	0	-
Benton	8	67	\$1,248	2	4	\$807
Clackamas	39	296	\$1,406	0	0	-
Clatsop	2	10	\$1,005	0	0	-
Columbia	7	32	\$965	0	0	-
Coos	3	23	\$933	0	0	-
Crook	3	23	\$840	0	0	-
Curry	2	19	\$505	1	2	^
Deschutes	31	199	\$1,000	5	9	\$800
Douglas	8	52	\$933	5	13	\$600
Gilliam	0	0	-	0	0	-
Grant	0	0	-	0	0	-
Harney	0	0	-	0	0	-
Hood River	6	50	\$1,190	0	0	-
Jackson	31	217	\$933	6	12	\$600
Jefferson	0	0	-	0	0	-
Josephine	9	65	\$933	1	5	^
Klamath	9	53	\$940	5	23	\$600
Lake	0	0	-	0	0	-
Lane	66	401	\$1,466	7	20	\$863
Lincoln	6	36	\$904	2	6	\$550
Linn	20	130	\$933	3	8	\$600
Malheur	2	18	\$925	1	4	^
Marion	84	436	\$933	23	73	\$650
Morrow	0	0	-	0	0	-
Multnomah	113	804	\$1,466	13	20	\$1,150
Polk	20	132	\$1,175	5	11	\$600
Sherman	1	6	^	1	2	^
Tillamook	3	13	\$933	0	0	-
Umatilla	13	68	\$900	4	15	\$480
Union	1	6	^	1	6	^
Wallowa	1	16	^	0	0	-
Wasco	4	28	\$917	0	0	-
Washington	109	663	\$1,466	26	72	\$1,050
Wheeler	0	0	-	0	0	-
Yamhill	16	99	\$934	4	18	\$700
Oregon	618	3,978	\$1,200	115	323	\$800

continued on next page

Table C3. Median Monthly Prices for Large Home-Based (continued)

School Age Summer			
County	# of Facilities Reporting	# of Preschool Slots	Median Monthly Price
Baker	0	0	-
Benton	3	8	\$1,150
Clackamas	2	10	\$1,150
Clatsop	0	0	-
Columbia	0	0	-
Coos	0	0	-
Crook	1	2	^
Curry	0	0	-
Deschutes	9	19	\$950
Douglas	5	13	\$800
Gilliam	0	0	-
Grant	0	0	-
Harney	0	0	-
Hood River	1	2	^
Jackson	10	31	\$800
Jefferson	0	0	-
Josephine	1	5	^
Klamath	6	24	\$850
Lake	0	0	-
Lane	9	19	\$1,150
Lincoln	5	19	\$875
Linn	5	12	\$800
Malheur	2	8	\$730
Marion	22	76	\$800
Morrow	0	0	-
Multnomah	16	28	\$1,197
Polk	9	26	\$900
Sherman	1	2	^
Tillamook	0	0	-
Umatilla	1	4	^
Union	1	6	^
Wallowa	0	0	-
Wasco	0	0	-
Washington	22	59	\$1,150
Wheeler	0	0	-
Yamhill	5	12	\$800
Oregon	136	385	\$950

Large home-based care includes certified family homes (n = 772). Prices current as of December 2024.

A dash reflects no price data for type of care and age group in a particular county. A ^ indicates prices not reported if county only represented by one facility. The number of facilities are those that are part of the priced market and reported a full-time price to the CCR&R; this does not reflect all child care facilities and slots in a given county. Prices are facility level (unweighted) prices.

APPENDIX D

Statewide Prices Over Time

The following tables provide full-time statewide price data by type of care and age group from 13 Market Price Studies over the past 24 years.^{xxix}

Table D1. Full-Time Prices at the 50th, 75th, and 90th Percentile for Small Home-Based Child Care Slots

	Infant	Toddler	Preschool Age	School Age School Year ²	School Age Summer
Small Home-Based Hourly¹					
<i>50th Percentile</i>					
CCR&R 2000	\$2.00	\$2.00	\$2.00	\$2.00	\$1.75
CCR&R 2002	\$2.00	\$2.00	\$2.00	\$2.00	\$2.00
CCR&R 2004	\$2.25	\$2.00	\$2.00	\$2.00	\$2.00
CCR&R 2006	\$2.50	\$2.25	\$2.25	\$2.25	\$2.25
CCR&R 2008	\$2.50	\$2.50	\$2.50	\$2.50	\$2.50
CCR&R 2010	\$3.00	\$2.70	\$2.50	\$2.50	\$2.50
CCR&R 2012	\$3.00	\$2.75	\$2.50	\$2.50	\$2.50
CCR&R 2014	\$3.00	\$3.00	\$3.00	\$3.00	\$3.00
CCR&R 2016	\$3.00	\$3.00	\$3.00	\$3.00	\$3.00
CCR&R 2018	\$3.50	\$3.24	\$3.00	\$3.00	\$3.05
CCR&R 2020	\$3.50	\$3.50	\$3.50	\$3.50	\$3.50
CCR&R 2022	\$4.50	\$4.25	\$4.00	\$4.00 ¹	-
CCR&R 2024	\$5.25	\$5.00	\$5.00	\$4.50	\$4.67
<i>75th Percentile</i>					
CCR&R 2000	\$2.25	\$2.05	\$2.00	\$2.00	\$2.00
CCR&R 2002	\$2.50	\$2.35	\$2.25	\$2.25	\$2.25
CCR&R 2004	\$2.50	\$2.50	\$2.50	\$2.50	\$2.35
CCR&R 2006	\$2.80	\$2.50	\$2.50	\$2.50	\$2.50
CCR&R 2008	\$3.00	\$3.00	\$3.00	\$3.00	\$3.00
CCR&R 2010	\$3.00	\$3.00	\$3.00	\$3.00	\$3.00
CCR&R 2012	\$3.00	\$3.00	\$3.00	\$3.00	\$3.00
CCR&R 2014	\$3.50	\$3.25	\$3.00	\$3.00	\$3.00
CCR&R 2016	\$3.50	\$3.50	\$3.25	\$3.25	\$3.00
CCR&R 2018	\$3.75	\$3.50	\$3.50	\$3.50	\$3.50
CCR&R 2020	\$4.00	\$4.00	\$4.00	\$4.00	\$4.00
CCR&R 2022	\$6.00	\$5.00	\$5.00	\$5.00 ¹	-
CCR&R 2024	\$7.00	\$6.33	\$6.00	\$5.79	\$5.67

^{xxix} Market price studies used price data given by facilities to their local CCR&R. 2000 (6,504 providers), 2002 (6,308 providers), 2004 (6,232 providers), 2006 (5,882 providers), 2008 (5,597 providers), 2010 (5,272 providers), 2012 (4,924 providers), 2014 (4,321 providers), 2016 (3,929 providers), 2018 (3,497 providers), 2020 (2,936 providers), 2022 (2,752 providers), and 2024 (2,656 providers). 2024 prices current as of December 2024.

	Infant	Toddler	Preschool Age	School Age School Year ²	School Age Summer
Small Home-Based Hourly (continued)					
<i>90th Percentile</i>					
CCR&R 2000	\$2.50	\$2.50	\$2.50	\$2.25	-
CCR&R 2002	\$2.75	\$2.50	\$2.50	\$2.50	\$2.50
CCR&R 2004	\$3.00	\$2.75	\$2.50	\$3.00	\$2.75
CCR&R 2006	\$3.50	\$3.00	\$3.00	\$3.00	\$3.00
CCR&R 2008	\$3.50	\$3.50	\$3.50	\$3.25	\$3.25
CCR&R 2010	\$4.00	\$3.50	\$3.50	\$3.50	\$3.50
CCR&R 2012	\$4.00	\$3.65	\$3.50	\$3.50	\$3.50
CCR&R 2014	\$4.00	\$4.00	\$3.75	\$4.00	\$3.75
CCR&R 2016	\$4.00	\$4.00	\$4.00	\$4.00	\$4.00
CCR&R 2018	\$5.00	\$4.50	\$4.50	\$4.25	\$5.00
CCR&R 2020	\$5.00	\$5.00	\$5.00	\$5.00	\$4.50
CCR&R 2022	\$7.00	\$7.00	\$6.00	\$6.00 ¹	-
CCR&R 2024	\$9.00	\$8.00	\$7.00	\$8.00	\$7.00

Small Home-Based Monthly¹

50th Percentile

CCR&R 2000	\$390	\$375	\$350	\$330	-
CCR&R 2002	\$400	\$400	\$385	\$234	\$350
CCR&R 2004	\$400	\$400	\$400	\$245	\$290
CCR&R 2006	\$425	\$400	\$400	\$275	\$400
CCR&R 2008	\$475	\$450	\$450	\$318	\$410
CCR&R 2010	\$500	\$470	\$450	\$280	\$450
CCR&R 2012	\$500	\$466	\$450	\$400	\$450
CCR&R 2014	\$500	\$500	\$480	\$421	\$450
CCR&R 2016	\$560	\$540	\$450	\$338	\$440
CCR&R 2018	\$575	\$550	\$550	\$480	\$495
CCR&R 2020	\$625	\$600	\$600	\$510	\$550
CCR&R 2022	\$800	\$750	\$730	\$650 ¹	-
CCR&R 2024	\$900	\$850	\$800	\$625	\$750

75th Percentile

CCR&R 2000	\$420	\$400	\$400	\$350	-
CCR&R 2002	\$500	\$460	\$450	\$375	\$400
CCR&R 2004	\$460	\$450	\$425	\$340	\$400
CCR&R 2006	\$500	\$480	\$450	\$360	\$445
CCR&R 2008	\$550	\$500	\$500	\$400	\$493
CCR&R 2010	\$560	\$528	\$500	\$450	\$500
CCR&R 2012	\$560	\$530	\$500	\$450	\$500
CCR&R 2014	\$600	\$600	\$550	\$500	\$500
CCR&R 2016	\$670	\$640	\$600	\$550	\$550

	Infant	Toddler	Preschool Age	School Age School Year ²	School Age Summer
Small Home-Based Monthly (continued)					
<i>75th Percentile</i>					
CCR&R 2018	\$670	\$645	\$610	\$600	\$560
CCR&R 2020	\$800	\$700	\$700	\$600	\$600
CCR&R 2022	\$1,085	\$960	\$900	\$750 ¹	-
CCR&R 2024	\$1,157	\$1,050	\$967	\$719	\$850
<i>90th Percentile</i>					
CCR&R 2000	\$480	\$450	\$430	\$390	-
CCR&R 2002	\$500	\$500	\$475	\$400	\$450
CCR&R 2004	\$540	\$500	\$500	\$400	\$495
CCR&R 2006	\$570	\$550	\$500	\$425	\$500
CCR&R 2008	\$600	\$600	\$550	\$495	\$525
CCR&R 2010	\$625	\$600	\$600	\$500	\$550
CCR&R 2012	\$650	\$600	\$600	\$500	\$560
CCR&R 2014	\$675	\$650	\$600	\$595	\$600
CCR&R 2016	\$800	\$750	\$700	\$610	\$600
CCR&R 2018	\$800	\$750	\$750	\$650	\$615
CCR&R 2020	\$900	\$800	\$800	\$680	\$700
CCR&R 2022	\$1,100	\$100	\$975	\$800 ¹	-
CCR&R 2024	\$1,350	\$1,200	\$1,150	\$900	\$1,000

¹For small home-based care, hourly was the most predominant mode facilities used to charge parents through 2018. In 2020, hourly and monthly were both used about equally. In 2022, monthly became the most predominant mode used. Therefore, both hourly and monthly are reported over time for small home-based care.

²In 2022, school-age programs were only able to report prices in one data collection field, thus the 2022 rates are listed under school age school year, but this is likely a mixture of both school year and summer care. School-age prices should be interpreted with caution, see Methodological Issues for more information.

Table D2. Full-Time Prices at the 50th, 75th, and 90th Percentile for Center Child Care Slots

	Infant	Toddler	Preschool Age	School Age School Year ¹	School Age Summer
Center Care Monthly					
<i>50th Percentile</i>					
CCR&R 2000	\$540	\$525	\$410	\$235	\$325
CCR&R 2002	\$610	\$610	\$475	\$250	\$490
CCR&R 2004	\$675	\$670	\$510	\$255	\$510
CCR&R 2006	\$749	\$751	\$540	\$295	\$539
CCR&R 2008	\$828	\$820	\$625	\$328	\$600
CCR&R 2010	\$895	\$866	\$690	\$335	\$600
CCR&R 2012	\$940	\$922	\$705	\$360	\$550
CCR&R 2014	\$997	\$998	\$740	\$394	\$600
CCR&R 2016	\$1,045	\$1,050	\$775	\$351	\$600
CCR&R 2018	\$1,211	\$1,180	\$870	\$575	\$403
CCR&R 2020	\$1,359	\$1,325	\$999	\$590	\$396
CCR&R 2022	\$1,580	\$1,500	\$1,116	\$400 ¹	-
CCR&R 2024	\$1,768	\$1,670	\$1,241	\$350 ²	\$927 ²
<i>75th Percentile</i>					
CCR&R 2000	\$645	\$640	\$495	\$295	\$370
CCR&R 2002	\$750	\$745	\$565	\$305	\$535
CCR&R 2004	\$828	\$820	\$625	\$315	\$600
CCR&R 2006	\$865	\$865	\$667	\$395	\$666
CCR&R 2008	\$935	\$938	\$737	\$410	\$700
CCR&R 2010	\$1,044	\$998	\$807	\$425	\$718
CCR&R 2012	\$1,121	\$1,081	\$850	\$419	\$700
CCR&R 2014	\$1,219	\$1,200	\$890	\$477	\$779
CCR&R 2016	\$1,302	\$1,250	\$980	\$480	\$739
CCR&R 2018	\$1,410	\$1,400	\$1,055	\$699	\$500
CCR&R 2020	\$1,570	\$1,595	\$1,200	\$780	\$520
CCR&R 2022	\$1,860	\$1,790	\$1,386	\$545 ¹	-
CCR&R 2024	\$2,060	\$1,995	\$1,540	\$440 ²	\$1,200 ²
<i>90th Percentile</i>					
CCR&R 2000	\$750	\$735	\$550	\$435	-
CCR&R 2002	\$875	\$865	\$635	\$398	\$649
CCR&R 2004	\$938	\$915	\$715	\$400	\$723
CCR&R 2006	\$960	\$960	\$766	\$508	\$774
CCR&R 2008	\$1,082	\$1,050	\$865	\$690	\$888
CCR&R 2010	\$1,200	\$1,159	\$950	\$605	\$883
CCR&R 2012	\$1,285	\$1,250	\$1,000	\$528	\$900

	Infant	Toddler	Preschool Age	School Age School Year ¹	School Age Summer
Center Care Monthly (continued)					
<i>90th Percentile</i>					
CCR&R 2014	\$1,350	\$1,349	\$1,060	\$660	\$1,025
CCR&R 2016	\$1,434	\$1,430	\$1,100	\$650	\$942
CCR&R 2018	\$1,572	\$1,550	\$1,200	\$900	\$659
CCR&R 2020	\$1,680	\$1,680	\$1,346	\$705	\$900
CCR&R 2022	\$2,090	\$1,990	\$1,575	\$755 ¹	-
CCR&R 2024	\$2,294	\$2,180	\$1,790	\$650 ²	\$1,740 ²

¹In 2022, school-age programs were only able to report prices in one data collection field, thus the 2022 rates are listed under school age school year, but this is likely a mixture of both school year and summer care.

²School-age center prices should be interpreted with caution, see Methodological Issues for more information.

Table D3. Full-Time Prices at the 50th, 75th, and 90th Percentile for Large Home-Based Child Care Slots

	Infant	Toddler	Preschool Age	School Age School Year ¹	School Age Summer
Large Home-Based Monthly					
<i>50th Percentile</i>					
CCR&R 2000	\$524	\$450	\$400	\$310	-
CCR&R 2002	\$524	\$475	\$420	\$350	\$327
CCR&R 2004	\$600	\$500	\$440	\$325	\$400
CCR&R 2006	\$525	\$500	\$460	\$320	\$450
CCR&R 2008	\$600	\$550	\$545	\$375	\$500
CCR&R 2010	\$700	\$675	\$575	\$400	\$500
CCR&R 2012	\$750	\$700	\$600	\$450	\$500
CCR&R 2014	\$855	\$760	\$675	\$500	\$550
CCR&R 2016	\$900	\$856	\$764	\$500	\$550
CCR&R 2018	\$1,000	\$950	\$815	\$644	\$600
CCR&R 2020	\$1,100	\$1,000	\$875	\$650	\$600
CCR&R 2022	\$1,500	\$1,330	\$1,100	\$900 ¹	-
CCR&R 2024	\$1,650	\$1,440	\$1,275	\$750	\$900
<i>75th Percentile</i>					
CCR&R 2000	\$650	\$625	\$525	\$390	-
CCR&R 2002	\$655	\$651	\$525	\$350	\$400
CCR&R 2004	\$700	\$650	\$550	\$400	\$550
CCR&R 2006	\$700	\$660	\$600	\$395	\$525
CCR&R 2008	\$800	\$745	\$650	\$450	\$565
CCR&R 2010	\$880	\$800	\$700	\$500	\$600
CCR&R 2012	\$900	\$875	\$750	\$600	\$600
CCR&R 2014	\$960	\$910	\$810	\$620	\$650
CCR&R 2016	\$1,000	\$1,000	\$900	\$650	\$650
CCR&R 2018	\$1,200	\$1,050	\$950	\$700	\$650
CCR&R 2020	\$1,300	\$1,200	\$1,044	\$750	\$750
CCR&R 2022	\$1,650	\$1,568	\$1,275	\$1,000 ¹	-
CCR&R 2024	\$1,809	\$1,675	\$1,466	\$900	\$1,150
<i>90th Percentile</i>					
CCR&R 2000	\$880	\$770	\$620	\$390	-
CCR&R 2002	\$850	\$725	\$665	\$651	\$525
CCR&R 2004	\$875	\$770	\$695	\$550	\$600
CCR&R 2006	\$875	\$765	\$725	\$550	\$625
CCR&R 2008	\$980	\$875	\$790	\$600	\$616
CCR&R 2010	\$1,100	\$1,100	\$817	\$600	\$620
CCR&R 2012	\$1,150	\$1,150	\$867	\$650	\$675
CCR&R 2014	\$1,230	\$1,230	\$950	\$650	\$690

	Infant	Toddler	Preschool Age	School Age School Year ¹	School Age Summer
Large Home-Based Monthly (continued)					
<i>90th Percentile</i>					
CCR&R 2016	\$1,300	\$1,275	\$1,065	\$688	\$800
CCR&R 2018	\$1,475	\$1,254	\$1,100	\$900	\$870
CCR&R 2020	\$1,560	\$1,500	\$1,200	\$875	\$950
CCR&R 2022	\$1,850	\$1,800	\$1,500	\$1,200 ¹	-
CCR&R 2024	\$2,000	\$1,810	\$1,600	\$1,150	\$1,200

¹In 2022, school-age programs were only able to report prices in one data collection field, thus the 2022 rates are listed under school age school year, but this is likely a mixture of both school year and summer care. School-age prices should be interpreted with caution, see Methodological Issues for more information.

APPENDIX E
Cluster Results

Table E1. 2024 Cluster and Statewide Prices for Small Home-Based Child Care Slots

INFANT					TODDLER			
	Cluster 1	Cluster 2	Cluster 3	Oregon	Cluster 1	Cluster 2	Cluster 3	Oregon
Monthly	N=2278	N=1076	N=1022	N=4376	N=2525	N=1217	N=1157	N=4899
90th	\$950	\$1,300	\$1,697	\$1,350	\$883	\$1,140	\$1,600	\$1,200
75th	\$850	\$1,175	\$1,500	\$1,157	\$800	\$1,050	\$1,300	\$1,050
60th	\$833	\$1,157	\$1,280	\$1,000	\$783	\$1,050	\$1,200	\$945
50th	\$833	\$1,150	\$1,200	\$900	\$783	\$1,000	\$1,120	\$850
25th	\$800	\$1,000	\$1,099	\$833	\$705	\$945	\$1,000	\$783
10th	\$700	\$833	\$990	\$750	\$600	\$783	\$900	\$700
Hourly	N=1037	N=686	N=740	N=2463	N=1152	N=771	N=857	N=2780
90th	\$5.50	\$9.00	\$10.00	\$9.00	\$5.50	\$8.00	\$9.00	\$8.00
75th	\$5.00	\$7.41	\$8.00	\$7.00	\$5.00	\$6.75	\$7.00	\$6.33
60th	\$4.67	\$7.00	\$7.00	\$6.00	\$4.50	\$6.00	\$6.33	\$5.50
50th	\$4.67	\$6.50	\$7.00	\$5.25	\$4.33	\$6.00	\$6.33	\$5.00
25th	\$4.25	\$5.00	\$6.00	\$4.67	\$4.00	\$5.00	\$5.00	\$4.33
10th	\$3.50	\$4.50	\$4.48	\$4.00	\$3.50	\$3.50	\$3.50	\$3.50
PRESCHOOL					SCHOOL AGE SCHOOL YEAR			
	Cluster 1	Cluster 2	Cluster 3	Oregon	Cluster 1	Cluster 2	Cluster 3	Oregon
Monthly	N=2691	N=1244	N=1297	N=5232	N=764	N=291	N=218	N=1273
90th	\$850	\$1,100	\$1,400	\$1,150	\$780	\$872	\$1,200	\$900
75th	\$800	\$1,000	\$1,200	\$967	\$719	\$775	\$1,100	\$719
60th	\$768	\$967	\$1,100	\$900	\$650	\$650	\$867	\$675
50th	\$768	\$967	\$1,000	\$800	\$619	\$600	\$750	\$625
25th	\$700	\$870	\$900	\$768	\$488	\$433	\$574	\$485
10th	\$600	\$768	\$800	\$650	\$220	\$330	\$400	\$300
Hourly	N=1237	N=829	N=954	N=3020	N=991	N=282	N=251	N=1524
90th	\$5.25	\$7.00	\$8.00	\$7.00	\$5.50	\$10.00	\$20.00	\$8.00
75th	\$5.00	\$6.00	\$6.38	\$6.00	\$4.67	\$7.00	\$10.00	\$5.79
60th	\$4.33	\$6.00	\$6.00	\$5.00	\$4.33	\$6.00	\$7.68	\$5.00
50th	\$4.17	\$5.50	\$6.00	\$5.00	\$4.33	\$5.84	\$7.00	\$4.50
25th	\$4.00	\$4.50	\$4.75	\$4.17	\$4.00	\$5.00	\$5.67	\$4.33
10th	\$3.50	\$3.50	\$3.00	\$3.50	\$3.50	\$4.33	\$5.10	\$4.00

Continued on next page

APPENDIX E (continued)

Table E1. 2024 Cluster and Statewide Prices for Small Home-Based Child Care Slots (continued)

SCHOOL AGE SUMMER				
	Cluster 1	Cluster 2	Cluster 3	Oregon
Monthly	N=1135	N=327	N=256	N=1718
90th	\$830	\$1,300	\$1,200	\$1,000
75th	\$767	\$925	\$1,000	\$850
60th	\$719	\$867	\$900	\$783
50th	\$719	\$843	\$900	\$750
25th	\$692	\$738	\$800	\$719
10th	\$561	\$700	\$750	\$600
Hourly	N=336	N=167	N=63	N=566
90th	\$5.00	\$9.00	\$10.00	\$7.00
75th	\$4.50	\$6.00	\$8.00	\$5.67
60th	\$4.33	\$5.67	\$7.50	\$5.00
50th	\$4.00	\$5.50	\$7.00	\$4.67
25th	\$3.75	\$5.00	\$5.67	\$4.00
10th	\$3.00	\$3.50	\$5.00	\$3.50

Prices are by child care slot (i.e., weighted prices). Small home-based prices are weighed by total capacity, see Methodological Issues section for more information.

¹For small home-based care, hourly was the most predominant mode facilities used to charge parents through 2018. In 2020, hourly and monthly were both used about equally. In 2022, monthly became the most predominant mode used. Both hourly and monthly are reported for small home-based care for reference to past studies.

APPENDIX E (continued)

Table E2. 2024 Cluster and Statewide Prices for Center Child Care Slots

INFANT					
	Cluster 1	Cluster 2	Cluster 3	Cluster 4	Oregon
Monthly	N=273	N=997	N=1307	N=1310	N=3887
90th	\$1,350	\$1,548	\$2,184	\$2,450	\$2,294
75th	\$1,200	\$1,470	\$2,000	\$2,360	\$2,060
60th	\$1,190	\$1,385	\$1,997	\$2,160	\$1,955
50th	\$1,072	\$1,350	\$1,900	\$2,110	\$1,768
25th	\$945	\$1,190	\$1,700	\$1,967	\$1,370
10th	\$727	\$1,000	\$1,500	\$1,560	\$1,089

TODDLER					
	Cluster 1	Cluster 2	Cluster 3	Cluster 4	Oregon
Monthly	N=409	N=1227	N=1829	N=2008	N=5473
90th	\$1,125	\$1,470	\$2,015	\$2,376	\$2,180
75th	\$1,083	\$1,355	\$1,923	\$2,180	\$1,995
60th	\$985	\$1,298	\$1,810	\$2,105	\$1,840
50th	\$950	\$1,260	\$1,710	\$2,037	\$1,670
25th	\$800	\$1,100	\$1,500	\$1,850	\$1,260
10th	\$636	\$950	\$1,122	\$1,550	\$965

PRESCHOOL					
	Cluster 1	Cluster 2	Cluster 3	Cluster 4	Oregon
Monthly	N=1960	N=4578	N=6275	N=5366	N=18179
90th	\$1,000	\$1,241	\$1,710	\$1,925	\$1,790
75th	\$900	\$1,058	\$1,500	\$1,795	\$1,540
60th	\$825	\$1,020	\$1,425	\$1,699	\$1,400
50th	\$755	\$995	\$1,400	\$1,600	\$1,241
25th	\$550	\$850	\$1,140	\$1,382	\$935
10th	\$340	\$680	\$865	\$1,160	\$675

SCHOOL AGE SCHOOL YEAR					
	Cluster 1	Cluster 2	Cluster 3	Cluster 4	Oregon
Monthly	N=777	N=3328	N=3427	N=1522	N=9054
90th	\$474	\$455	\$695	\$1,030	\$650
75th	\$440	\$440	\$440	\$700	\$440
60th	\$410	\$350	\$440	\$510	\$415
50th	\$350	\$330	\$330	\$430	\$350
25th	\$275	\$200	\$265	\$340	\$265
10th	\$100	\$200	\$240	\$270	\$200

SCHOOL AGE SUMMER					
	Cluster 1	Cluster 2	Cluster 3	Cluster 4	Oregon
Monthly	N=422	N=886	N=595	N=378	N=2281
90th	\$975	\$1,050	\$1,762	\$2,500	\$1,740
75th	\$927	\$800	\$1,500	\$1,762	\$1,200
60th	\$862	\$800	\$1,166	\$1,675	\$990
50th	\$800	\$800	\$1,125	\$1,655	\$927
25th	\$550	\$750	\$960	\$1,275	\$800
10th	\$220	\$695	\$800	\$1,100	\$629

Prices are by child care slot (i.e., weighted prices). Center prices are weighed by age group capacity, see Methodological Issues section for more information.

APPENDIX E (continued)

Table E3. 2024 Cluster and Statewide Prices for Large Home-Based Child Care Slots

INFANT					
	Cluster 1	Cluster 2	Cluster 3	Cluster 4	Oregon
Monthly	N=100	N=327	N=602	N=351	N=1380
90th	\$1,150	\$1,500	\$1,995	\$2,200	\$2,000
75th	\$1,067	\$1,300	\$1,809	\$2,000	\$1,809
60th	\$1,067	\$1,100	\$1,809	\$1,875	\$1,809
50th	\$1,067	\$1,077	\$1,809	\$1,809	\$1,650
25th	\$925	\$1,067	\$1,600	\$1,675	\$1,200
10th	\$748	\$1,000	\$1,300	\$1,450	\$1,067
TODDLER					
	Cluster 1	Cluster 2	Cluster 3	Cluster 4	Oregon
Monthly	N=224	N=555	N=945	N=559	N=2283
90th	\$1,100	\$1,300	\$1,750	\$2,000	\$1,810
75th	\$1,008	\$1,175	\$1,675	\$1,920	\$1,675
60th	\$1,008	\$1,008	\$1,675	\$1,700	\$1,600
50th	\$1,004	\$1,008	\$1,675	\$1,675	\$1,440
25th	\$850	\$933	\$1,380	\$1,500	\$1,008
10th	\$775	\$840	\$1,120	\$1,300	\$900
PRESCHOOL					
	Cluster 1	Cluster 2	Cluster 3	Cluster 4	Oregon
Monthly	N=441	N=1074	N=1604	N=859	N=3978
90th	\$1,035	\$1,200	\$1,600	\$1,850	\$1,600
75th	\$950	\$1,075	\$1,466	\$1,600	\$1,466
60th	\$933	\$973	\$1,466	\$1,500	\$1,404
50th	\$933	\$933	\$1,466	\$1,500	\$1,275
25th	\$750	\$900	\$1,200	\$1,400	\$933
10th	\$675	\$800	\$950	\$1,120	\$815
SCHOOL AGE SCHOOL YEAR					
	Cluster 1	Cluster 2	Cluster 3	Cluster 4	Oregon
Monthly	N=68	N=125	N=68	N=62	N=323
90th	\$800	\$1,075	\$1,150	\$1,150	\$1,150
75th	\$735	\$800	\$900	\$1,150	\$900
60th	\$600	\$700	\$863	\$1,000	\$800
50th	\$600	\$650	\$850	\$1,000	\$750
25th	\$380	\$600	\$675	\$863	\$600
10th	\$250	\$400	\$500	\$800	\$375
SCHOOL AGE SUMMER					
	Cluster 1	Cluster 2	Cluster 3	Cluster 4	Oregon
Monthly	N=63	N=168	N=91	N=63	N=385
90th	\$900	\$1,075	\$1,200	\$2,000	\$1,200
75th	\$875	\$950	\$1,150	\$1,466	\$1,150
60th	\$800	\$800	\$1,150	\$1,194	\$1,050
50th	\$800	\$800	\$1,150	\$1,150	\$900
25th	\$800	\$800	\$900	\$1,150	\$800
10th	\$750	\$725	\$800	\$1,100	\$750

Prices are by child care slot (i.e., weighted prices). Large home-based prices are weighed by age group capacity, see Methodological Issues section for more information.

APPENDIX F

Clusters by Zip Code

Table F1. 2024 Clusters for Zip Codes by County

County	City	Zip	Small Home-Based Cluster			Center and Large Home Cluster	Center Cluster	Large Home Cluster	Center and Large Home Cluster
			2020	2022	2024	2020	2022	2022	2024
Baker	Baker City	97814	1	1	1	1	1	1	1
Baker	Bridgeport	97819	1	1	1*	1	1	1	1*
Baker	Durkee	97905	1	1	1*	1	1	1	1*
Baker	Haines	97833	1	1	1	1	1	1	1*
Baker	Halfway	97834	1	1	1*	1	1	1	1*
Baker	Hereford	97837	1	1	1*	1	1	1	1*
Baker	Huntington	97907	1	1	1*	1	1	1	1*
Baker	Oxbow	97840	1	1	1*	1	1	1	1*
Baker	Richland	97870	1	1	1*	1	1	1	1*
Baker	Sumpter	97877	1	1	1*	1	1	1	1*
Baker	Unity	97884	1	1	1*	1	1	1	1*
Benton	Alsea	97324	1	1	1*	1	1	1	1*
Benton	Blodgett	97326	2	1	1*	2	1	1	1*
Benton	Corvallis NW	97330	3	3	2	3	3	3	3
Benton	Corvallis OSU	97331	3	3	3*	3	3	3	3
Benton	Corvallis POB	97339	3	3	3*	3	3	3	3*
Benton	Corvallis SW	97333	3	3	3*	3	3	3	3
Benton	Kings Valley	97353	2	2	2*	2	2	2	2*
Benton	Monroe	97456	2	1	1*	2	2	2	2*
Benton	Philomath	97370	3	1	1	2	2	2	2*
Clackamas	Beavercreek	97004	2	2	2*	2	1	1	1
Clackamas	Boring	97009	2	2	2	2	2	2	3
Clackamas	Brightwood	97011	2	2	2*	2	2	2	2*
Clackamas	Canby	97013	2	3	2	2	4	3	2
Clackamas	Clackamas	97015	3	3	3	3	3	3	4
Clackamas	Colton	97017	2	2	2*	2	1	1	1*
Clackamas	Damascus	97089	3	3	3	2	2	2	2
Clackamas	Eagle Creek	97022	2	2	3	2	1	1	1*
Clackamas	Estacada	97023	2	2	2	2	2	2	3
Clackamas	Gladstone	97027	3	3	3	3	4	3	3
Clackamas	Gov't Camp	97028	2	2	2*	2	2	2	2*
Clackamas	Happy Valley	97086	3	3	3	3	3	3	2
Clackamas	Lake Oswego	97034	3	3	3*	3	4	3	3
Clackamas	Lake Oswego	97035	3	3	1	4	4	4	4*

County	City	Zip	Small Home-Based Cluster			Center and Large Home Cluster	Center Cluster	Large Home Cluster	Center and Large Home Cluster
			2020	2022	2024	2020	2022	2022	2024
Clackamas	Marylhurst	97036	3	3	3*	2	2	2	2*
Clackamas	Milwaukie	97222	3	3	3	3	3	3	4
Clackamas	Milwaukie	97267	3	3	3	3	3	3	3
Clackamas	Molalla	97038	2	2	1	2	1	1	1
Clackamas	Mulino	97042	2	2	2*	2	1	1	1*
Clackamas	Oregon City	97045	3	3	3	3	3	3	2
Clackamas	Rhododendron	97049	2	2	2*	2	2	2	2*
Clackamas	Sandy	97055	2	2	3	2	3	2	3
Clackamas	Welches	97067	2	2	2*	2	2	2	1
Clackamas	West Linn	97068	3	3	3*	3	4	3	3
Clackamas	Wilsonville	97070	2	2	2*	3	3	3	3
Clatsop	Arch Cape	97102	1	1	1*	1	1	1	1*
Clatsop	Astoria	97103	2	3	1	1	2	1	2
Clatsop	Cannon Beach	97110	2	1	1*	1	1	1	1*
Clatsop	Hammond	97121	2	1	3	1	1	1	1
Clatsop	Seaside	97138	2	1	1*	1	1	1	2
Clatsop	Tolovana Park	97145	1	1	1*	1	1	1	1*
Clatsop	Warrenton	97146	2	1	1	1	1	1	2
Columbia	Columbia City	97018	2	1	1*	1	1	1	1
Columbia	Deer Island	97054	2	2	2*	1	1	1	1*
Columbia	Rainier	97048	2	2	2*	1	1	1	1
Columbia	Scappoose	97056	2	2	2	2	2	2	2
Columbia	St. Helens	97051	2	3	2	2	3	3	3
Columbia	Vernonia	97064	1	1	1*	1	1	1	1*
Columbia	Warren	97053	2	2	2*	1	1	1	2
Columbia	Westport	97016	2	1	1*	1	1	1	1*
Coos	Allegany	97407	2	1	1*	1	1	1	1*
Coos	Bandon	97411	2	1	2	1	2	1	2
Coos	Broadbent	97414	2	1	1*	1	1	1	1*
Coos	Coos Bay	97420	2	2	1	1	2	1	2
Coos	Coquille	97423	2	2	3	1	1	1	1*
Coos	Lakeside	97449	2	1	1*	1	1	1	1*
Coos	Myrtle Point	97458	2	1	1*	1	1	1	1*
Coos	North Bend	97459	2	1	1	1	1	1	1
Coos	Norway	97460	2	1	1*	1	1	1	1*
Coos	Powers	97466	2	1	1*	1	1	1	1*
Coos	Remote	97468	2	1	1*	1	1	1	1*

County	City	Zip	Small Home-Based Cluster			Center and Large Home Cluster	Center Cluster	Large Home Cluster	Center and Large Home Cluster
			2020	2022	2024	2020	2022	2022	2024
Crook	Paulina	97751	1	1	1*	1	1	1	1*
Crook	Post	97752	1	1	1*	1	1	1	1*
Crook	Powell Butte	97753	1	1	1*	1	1	1	2
Crook	Prineville	97754	1	1	1	1	1	1	1
Curry	Agness	97406	2	1	1*	1	1	1	1*
Curry	Brookings	97415	2	2	3	1	1	1	1
Curry	Gold Beach	97444	2	1	1*	1	1	1	1
Curry	Langlois	97450	2	1	1*	1	1	1	1*
Curry	Ophir	97464	2	1	1*	1	1	1	1*
Curry	Port Orford	97465	2	1	1*	1	1	1	1
Curry	Sixes	97476	2	1	1*	1	1	1	1*
Curry	Wedderburn	97491	2	1	1*	1	1	1	1*
Deschutes	Bend	97701	3	3	3	3	3	3	3
Deschutes	Bend	97702	3	3	2	3	3	2	3
Deschutes	Bend	97703	3	3	3*	3	3	3	4
Deschutes	Bend	97708	3	3	3*	2	2	2	2*
Deschutes	Bend	97709	3	3	3*	2	2	2	2*
Deschutes	Brothers	97712	1	1	1*	1	1	1	1*
Deschutes	La Pine	97739	2	2	2	1	1	1	2
Deschutes	Redmond	97756	2	3	2	1	3	1	2
Deschutes	Sisters	97759	2	2	2*	1	1	1	3
Deschutes	Sun River	97707	2	2	3	1	1	1	1*
Douglas	Azalea	97410	1	1	1	1	1	1	1*
Douglas	Camas Valley	97416	1	1	1*	1	1	1	1*
Douglas	Canyonville	97417	1	1	1*	1	1	1	1*
Douglas	Curtin	97428	1	1	1*	1	1	1	1*
Douglas	Days Creek	97429	1	1	1*	1	1	1	1*
Douglas	Dillard	97432	1	1	1*	1	1	1	1*
Douglas	Drain	97435	1	1	1*	1	1	1	1
Douglas	Elkton	97436	1	1	1*	1	1	1	1*
Douglas	Gardiner	97441	1	1	1*	1	1	1	1*
Douglas	Glendale	97442	1	1	1*	1	1	1	1*
Douglas	Glide	97443	1	1	1*	1	1	1	1
Douglas	Idleyld Park	97447	1	1	1*	1	1	1	1*
Douglas	Myrtle Creek	97457	2	1	1	1	1	1	1
Douglas	Oakland	97462	2	1	1	1	1	1	1*
Douglas	Reedsport	97467	2	1	1*	1	1	1	1*
Douglas	Riddle	97469	1	1	1*	1	1	1	1*

County	City	Zip	Small Home-Based Cluster			Center and Large Home Cluster	Center Cluster	Large Home Cluster	Center and Large Home Cluster
			2020	2022	2024	2020	2022	2022	2024
Douglas	Roseburg	97470	2	2	1	1	2	2	2
Douglas	Roseburg	97471	2	2	1	1	1	2	1
Douglas	Scottsburg	97473	1	1	1*	1	1	1	1*
Douglas	Sutherlin	97479	2	1	1	1	1	1	1
Douglas	Tenmile	97481	1	1	1*	1	1	1	1*
Douglas	Tiller	97484	1	1	1*	1	1	1	1*
Douglas	Umpqua	97486	1	1	1*	1	1	1	1*
Douglas	Wilbur	97494	1	1	1*	1	1	1	1*
Douglas	Winchester	97495	1	2	2*	1	1	1	1*
Douglas	Winston	97496	1	1	1*	1	1	1	1
Douglas	Yoncalla	97499	1	1	1*	1	1	1	1*
Gilliam	Arlington	97812	1	1	1*	1	1	1	1
Gilliam	Condon	97823	1	1	1	1	1	1	2
Gilliam	Mikkalo	97861	1	1	1*	1	1	1	1*
Grant	Bates	97817	1	1	1*	1	1	1	1*
Grant	Canyon City	97820	1	1	1*	1	1	1	1
Grant	Dayville	97825	1	1	1*	1	1	1	1*
Grant	Fox	97831	1	1	1*	1	1	1	1*
Grant	John Day	97845	1	1	1*	1	1	1	1*
Grant	Kimberly	97848	1	1	1*	1	1	1	1*
Grant	Long Creek	97856	1	1	1*	1	1	1	1*
Grant	Monument	97864	1	1	1*	1	1	1	1*
Grant	Mount Vernon	97865	1	1	1*	1	1	1	1*
Grant	Prairie City	97869	1	1	1*	1	1	1	1*
Grant	Ritter	97872	1	1	1*	1	1	1	1*
Grant	Seneca	97873	1	1	1*	1	1	1	1*
Harney	Burns	97720	1	1	1*	1	1	1	1*
Harney	Crane	97732	1	1	1*	1	1	1	1*
Harney	Diamond	97722	1	1	1*	1	1	1	1*
Harney	Drewsey	97904	1	1	1*	1	1	1	1*
Harney	Fields	97710	1	1	1*	1	1	1	1*
Harney	Frenchglen	97736	1	1	1*	1	1	1	1*
Harney	Hines	97738	1	1	1*	1	1	1	1*
Harney	Lawen	97740	1	1	1*	1	1	1	1*
Harney	Princeton Sta	97721	1	1	1*	1	1	1	1*
Harney	Riley	97758	1	1	1*	1	1	1	1*
Hood River	Cascade Locks	97014	3	2	2*	2	2	2	2*
Hood River	Hood River	97031	3	2	2	3	3	3	3

			Small Home-Based Cluster			Center and Large Home Cluster	Center Cluster	Large Home Cluster	Center and Large Home Cluster
County	City	Zip	2020	2022	2024	2020	2022	2022	2024
Hood River	Mount Hood/Parkdale	97041	2	2	2*	2	2	2	2
Hood River	Odell	97044	2	2	2*	2	2	2	2*
Jackson	Ashland	97520	3	2	2	2	2	3	3
Jackson	Butte Falls	97522	1	1	1*	1	1	1	1*
Jackson	Central Point	97502	2	2	1	2	2	2	2
Jackson	Eagle Point	97524	2	1	1*	1	2	1	2
Jackson	Gold Hill	97525	2	1	1*	1	1	1	1*
Jackson	Jacksonville	97530	1	1	1*	1	1	1	1*
Jackson	Medford	97501	2	2	1	2	2	2	2
Jackson	Medford	97504	2	2	1	2	2	2	2
Jackson	Phoenix	97535	2	1	1	2	2	2	2
Jackson	Prospect	97536	1	1	1*	1	1	1	1*
Jackson	Rogue River	97537	2	1	1*	1	1	1	1
Jackson	Shady Cove	97539	2	1	1*	1	1	1	1
Jackson	Talent	97540	2	1	1*	1	2	2	2
Jackson	Trail	97541	2	1	1*	1	2	1	2*
Jackson	White City	97503	2	2	1	1	1	1	2
Jefferson	Ashwood	97711	1	1	1*	1	1	1	1*
Jefferson	Camp Sherman	97730	1	1	1*	1	1	1	1*
Jefferson	Culver	97734	1	1	1*	1	1	1	1*
Jefferson	Madras	97741	2	1	1	1	1	2	1
Jefferson	Metolius	97742	1	1	1*	1	1	1	1*
Jefferson	Terrebonne	97760	2	2	2*	1	1	1	2
Jefferson	Warm Springs	97761	1	1	1*	1	1	1	1
Josephine	Cave Junction	97523	1	1	1*	1	1	1	1
Josephine	Grants Pass	97526	2	1	1	1	2	2	2
Josephine	Grants Pass	97527	2	1	1	1	2	2	2
Josephine	Kerby	97531	1	1	1*	1	1	1	1*
Josephine	Merlin	97532	1	1	1*	1	1	1	1*
Josephine	Murphy	97533	1	1	1*	1	1	1	1*
Josephine	O'Brien	97534	1	1	1*	1	1	1	1*
Josephine	Selma	97538	1	1	1*	1	1	1	1*
Josephine	Wilderville	97543	1	1	1*	1	1	1	1*
Josephine	Williams	97544	1	1	1	1	1	1	2
Josephine	Wolf Creek	97497	1	1	1*	1	1	1	2
Klamath	Beatty	97621	2	1	1*	1	1	1	1*
Klamath	Bly	97622	2	1	1*	1	1	1	1*
Klamath	Bonanza	97623	2	1	1*	1	1	1	1*

County	City	Zip	Small Home-Based Cluster			Center and Large Home Cluster	Center Cluster	Large Home Cluster	Center and Large Home Cluster
			2020	2022	2024	2020	2022	2022	2024
Klamath	Chemult	97731	2	1	1*	1	1	1	1*
Klamath	Chiloquin	97624	2	1	1	1	1	1	1*
Klamath	Crater Lake	97604	2	1	1*	1	1	1	1*
Klamath	Crescent Lake	97425	2	1	1*	1	1	1	1*
Klamath	Crescent	97733	2	1	1*	1	1	1	1*
Klamath	Dairy	97625	2	1	1*	1	1	1	1*
Klamath	Fort Klamath	97626	2	1	1*	1	1	1	1*
Klamath	Gilchrist	97737	2	1	1*	1	1	1	1*
Klamath	Keno	97627	2	1	1*	1	1	1	1*
Klamath	Klamath Falls	97601	2	1	1	1	1	1	2
Klamath	Klamath Falls	97603	2	1	1	1	1	2	2
Klamath	Malin	97632	2	1	1*	1	1	1	1*
Klamath	Merrill	97633	2	1	1*	1	1	1	1*
Klamath	Midland	97634	2	1	1*	1	1	1	1*
Klamath	Sprague River	97639	2	1	1*	1	1	1	1*
Lake	Adel	97620	1	1	1*	1	1	1	1*
Lake	Christmas Valley	97641	1	1	1*	1	1	1	1*
Lake	Fort Rock	97735	1	1	1*	1	1	1	1*
Lake	Lakeview	97630	1	1	1*	1	1	1	1*
Lake	New Pine Crk	97635	1	1	1*	1	1	1	1*
Lake	Paisley	97636	1	1	1*	1	1	1	1*
Lake	Plush	97637	1	1	1*	1	1	1	1*
Lake	Silver Lake	97638	1	1	1*	1	1	1	1*
Lake	Summer Lake	97640	1	1	1*	1	1	1	1*
Lane	Alvadore	97409	1	1	1*	1	1	1	1*
Lane	Blachly	97412	1	1	1*	1	1	1	1*
Lane	Cheshire	97419	1	1	1*	1	1	1	1*
Lane	Cottage Grove	97424	2	1	2	2	2	2	1
Lane	Creswell	97426	1	1	1*	2	2	2	2
Lane	Culp Creek	97427	1	1	1*	1	1	1	1*
Lane	Deadwood	97430	1	1	1*	1	1	1	1*
Lane	Dexter	97431	1	1	1	1	1	1	1*
Lane	Disston	97433	1	1	1*	1	1	1	1*
Lane	Dorena	97434	1	1	1*	1	1	1	1*
Lane	Elmira	97437	1	1	1	1	1	1	1*
Lane	Eugene	97401	2	3	2	3	3	3	3
Lane	Eugene	97402	2	3	2	3	3	3	3
Lane	Eugene	97403	2	3	3*	3	3	3	2

County	City	Zip	Small Home-Based Cluster			Center and Large Home Cluster	Center Cluster	Large Home Cluster	Center and Large Home Cluster
			2020	2022	2024	2020	2022	2022	2024
Lane	Eugene	97404	2	3	3	3	3	3	3
Lane	Eugene	97405	2	3	2	3	3	3	3
Lane	Eugene	97408	2	3	2	2	2	3	3
Lane	Fall Creek	97438	1	1	1*	1	1	1	1*
Lane	Finn Rock	97488	1	1	1*	1	1	1	1
Lane	Florence	97439	1	1	1*	1	1	1	1
Lane	Junction City	97448	2	1	1	2	2	1	2
Lane	Leaburg	97489	2	1	1*	1	1	1	1*
Lane	Lorane	97451	1	1	1*	1	1	1	1*
Lane	Lowell	97452	1	1	1*	1	1	1	1*
Lane	Mapleton	97453	1	1	1*	1	1	1	1*
Lane	Marcola	97454	2	1	1*	1	1	1	1*
Lane	Mckenzie Bridge	97413	1	1	1*	1	1	1	1*
Lane	Noti	97461	1	1	1*	1	1	1	1*
Lane	Oakridge	97463	1	1	1	1	1	1	1*
Lane	Pleasant Hill	97455	2	1	1*	2	2	3	3*
Lane	Saginaw	97472	1	1	1*	1	1	1	1*
Lane	Springfield	97477	2	3	2	3	3	3	3
Lane	Springfield	97478	2	3	2	3	3	3	3
Lane	Swiss Home	97480	1	1	1*	1	1	1	1*
Lane	Thurston	97482	2	2	2*	1	1	1	1*
Lane	Veneta	97487	2	1	2	2	2	2	2
Lane	Walton	97490	1	1	1*	1	1	1	1*
Lane	Westfir	97492	1	1	1*	1	1	1	1*
Lane	Westlake	97493	1	1	1*	1	1	1	1*
Lincoln	Burnt Woods	97328	2	1	1*	1	1	1	1*
Lincoln	Depoe Bay	97341	2	1	1*	1	1	1	1*
Lincoln	Eddyville	97343	2	1	1*	1	1	1	1*
Lincoln	Gleneden Beach	97388	1	1	1*	1	1	1	1*
Lincoln	Lincoln City	97367	2	1	1	1	1	1	1
Lincoln	Lodsden	97357	2	1	1*	1	1	1	1*
Lincoln	Neotsu	97364	1	1	1*	1	1	1	1*
Lincoln	Newport	97365	3	1	1	1	1	1	1
Lincoln	Otis	97368	1	1	1*	1	1	1	1*
Lincoln	Otter Rock	97369	1	1	1*	1	1	1	1*
Lincoln	Rose Lodge	97372	2	1	1*	1	1	1	1*
Lincoln	Seal Rock	97376	2	1	1*	1	1	1	1*
Lincoln	Siletz	97380	2	1	1*	1	1	1	1*

			Small Home-Based Cluster			Center and Large Home Cluster	Center Cluster	Large Home Cluster	Center and Large Home Cluster
County	City	Zip	2020	2022	2024	2020	2022	2022	2024
Lincoln	South Beach	97366	2	1	2	1	1	1	1*
Lincoln	Tidewater	97390	1	1	1*	1	1	1	1*
Lincoln	Toledo	97391	2	2	1	1	1	1	1
Lincoln	Waldport	97394	2	1	1*	1	1	1	2
Lincoln	Yachats	97498	1	1	1*	1	1	1	1
Linn	Albany	97321	2	1	2	2	2	2	2
Linn	Albany	97322	2	1	1	2	2	2	2
Linn	Brownsville	97327	2	1	1*	1	1	1	1*
Linn	Cascadia	97329	1	1	1*	1	1	1	1*
Linn	Crabtree	97335	1	1	1*	1	1	1	1*
Linn	Crawfordsville	97336	2	2	2*	1	1	1	1*
Linn	Foster	97345	1	1	1*	1	1	1	1*
Linn	Halsey	97348	1	1	1*	1	1	1	1*
Linn	Harrisburg	97446	2	1	1	1	1	1	1*
Linn	Lebanon	97355	2	1	1	1	1	1	1
Linn	Lyons	97358	1	1	1	1	1	1	1*
Linn	Mill City	97360	1	1	1*	1	1	1	1
Linn	Scio	97374	2	1	1*	1	1	1	1*
Linn	Shedd	97377	2	1	1	1	1	1	1*
Linn	Sweet Home	97386	2	1	1	1	1	1	1
Linn	Tangent	97389	2	1	1	1	1	1	1
Malheur	Adrian	97901	1	1	1*	1	1	1	1
Malheur	Arock	97902	1	1	1*	1	1	1	1*
Malheur	Brogan	97903	1	1	1*	1	1	1	1*
Malheur	Harper	97906	1	1	1*	1	1	1	1*
Malheur	Ironside	97908	1	1	1*	1	1	1	1*
Malheur	Jamieson	97909	1	1	1*	1	1	1	1*
Malheur	Jordon Valley	97910	1	1	1*	1	1	1	1*
Malheur	Juntura	97911	1	1	1*	1	1	1	1*
Malheur	Nyssa	97913	1	1	1	1	1	1	1
Malheur	Ontario	97914	1	1	1	1	1	1	2
Malheur	Vale	97918	1	1	1*	1	1	1	1
Malheur	Westfall	97920	1	1	1*	1	1	1	1*
Malheur	Willow Crk St	97919	1	1	1*	1	1	1	1*
Marion	Aumsville	97325	1	1	1	1	1	1	1
Marion	Aurora	97002	2	2	2*	1	1	1	2
Marion	Detroit	97342	1	1	1*	1	1	1	1*
Marion	Donald	97020	1	1	1*	1	1	1	1

County	City	Zip	Small Home-Based Cluster			Center and Large Home Cluster	Center Cluster	Large Home Cluster	Center and Large Home Cluster
			2020	2022	2024	2020	2022	2022	2024
Marion	Gates	97346	1	1	1*	1	1	1	1*
Marion	Gervais	97026	1	1	1*	1	1	1	1
Marion	Hubbard	97032	1	1	1*	1	1	1	1
Marion	Idanha	97350	1	1	1*	1	1	1	1*
Marion	Jefferson	97352	1	1	1*	1	1	1	1*
Marion	Keizer	97307	2	2	2*	2	2	2	2*
Marion	Marion	97359	1	1	1*	1	1	1	1*
Marion	Mehama	97384	1	1	1*	1	1	1	1*
Marion	Mount Angel	97362	1	1	1	2	2	1	2
Marion	Saint Paul	97137	1	1	1*	1	1	1	1
Marion	Salem	97306	2	2	2	2	2	2	2
Marion	Salem	97309	2	2	2*	2	2	2	2*
Marion	Salem	97317	2	1	1	2	2	1	1
Marion	Salem NE	97301	2	1	1	2	2	1	2
Marion	Salem NE	97303	2	2	1	2	2	2	2
Marion	Salem NE	97305	2	1	1	2	2	1	2
Marion	Salem St Inst	97310	2	2	2*	2	2	2	2*
Marion	Scotts Mills	97375	1	1	1*	1	1	1	1*
Marion	Silverton	97381	1	1	1	1	2	1	2
Marion	South Salem	97302	2	2	1	2	2	2	1
Marion	Stayton	97383	1	1	2	1	1	2	2
Marion	Sublimity	97385	1	1	1	1	1	1	1*
Marion	Turner	97392	1	2	1	2	2	1	1
Marion	Woodburn	97071	2	1	1	1	1	1	2
Morrow	Boardman	97818	1	1	1	1	1	1	1
Morrow	Cecil	97822	1	1	1*	1	1	1	1*
Morrow	Heppner	97836	1	1	1*	1	1	1	1
Morrow	Ione	97843	1	1	1*	1	1	1	1*
Morrow	Irrigon	97844	1	1	3	1	1	1	1*
Morrow	Lexington	97839	1	1	1*	1	1	1	1*
Multnomah	Bridal Veil	97010	2	2	2*	3	3	3	3*
Multnomah	Corbett	97019	3	2	2*	3	3	3	3*
Multnomah	Fairview	97024	2	3	3*	3	3	3	3*
Multnomah	Gresham	97030	2	3	2	3	3	4	4
Multnomah	Gresham	97080	2	3	3	3	3	4	3
Multnomah	Oak Grove	97268	2	2	2*	3	3	3	3*
Multnomah	Portland	97201	3	3	3*	4	4	4	4
Multnomah	Portland	97202	3	3	3*	4	4	4	4

County	City	Zip	Small Home-Based Cluster			Center and Large Home Cluster	Center Cluster	Large Home Cluster	Center and Large Home Cluster
			2020	2022	2024	2020	2022	2022	2024
Multnomah	Portland	97203	3	3	3	4	4	4	3
Multnomah	Portland	97204	3	3	3*	4	4	4	3
Multnomah	Portland	97205	3	3	3*	4	4	4	4*
Multnomah	Portland	97206	3	3	3	4	4	4	4
Multnomah	Portland	97209	3	3	3*	4	4	4	4
Multnomah	Portland	97210	3	3	3*	4	4	4	4
Multnomah	Portland	97211	3	3	2	4	4	4	4
Multnomah	Portland	97212	3	3	3*	4	4	4	4
Multnomah	Portland	97213	3	3	3	4	4	4	4
Multnomah	Portland	97214	3	3	3	4	4	4	4
Multnomah	Portland	97215	3	3	3*	4	4	4	4
Multnomah	Portland	97216	2	3	3	3	3	4	3
Multnomah	Portland	97217	3	3	3*	4	4	4	4
Multnomah	Portland	97218	3	3	3	4	4	4	3
Multnomah	Portland	97219	3	3	3	4	4	4	4
Multnomah	Portland	97220	2	3	3	4	4	4	4
Multnomah	Portland	97221	3	3	3*	4	4	4	3
Multnomah	Portland	97227	3	3	3*	4	4	4	3
Multnomah	Portland	97230	2	3	3	3	3	3	3
Multnomah	Portland	97231	3	3	3	4	4	4	4
Multnomah	Portland	97232	3	3	3*	4	4	4	4
Multnomah	Portland	97233	2	3	3	3	3	4	3
Multnomah	Portland	97236	3	3	2	3	3	4	4
Multnomah	Portland	97239	3	3	3*	4	4	4	4
Multnomah	Portland	97242	3	3	3*	4	4	4	4*
Multnomah	Portland	97266	2	3	2	3	3	4	3
Multnomah	Portland	97286	3	3	3*	4	4	4	4*
Multnomah	Portland	97292	3	3	3*	4	4	4	4*
Multnomah	Troutdale/Wood Village	97060	3	3	3	3	3	3	3
Polk	Dallas	97338	2	2	1	1	1	1	2
Polk	Falls City	97344	2	1	1*	1	1	1	1*
Polk	Grand Ronde	97347	1	1	1*	1	1	1	1*
Polk	Independence	97351	2	2	2	1	2	3	3
Polk	Monmouth	97361	2	3	2	1	2	2	3
Polk	Rickreall	97371	2	2	2*	1	1	1	1*
Polk	Salem West	97304	2	2	1	2	2	2	3
Sherman	Grass Valley	97029	2	1	1*	1	1	1	1*
Sherman	Kent	97033	2	1	1*	1	1	1	1*

			Small Home-Based Cluster			Center and Large Home Cluster	Center Cluster	Large Home Cluster	Center and Large Home Cluster
County	City	Zip	2020	2022	2024	2020	2022	2022	2024
Sherman	Moro	97039	2	1	1*	1	1	1	1
Sherman	Rufus	97050	2	1	1*	1	1	1	1*
Sherman	Wasco	97065	2	1	1*	1	1	1	1*
Tillamook	Bay City	97107	2	1	1*	1	1	1	1*
Tillamook	Beaver	97108	2	1	1*	1	1	1	1*
Tillamook	Cloverdale	97112	2	1	2	1	1	1	1*
Tillamook	Garibaldi	97118	2	1	1*	1	1	1	1*
Tillamook	Hebo	97122	2	1	1*	1	1	1	1*
Tillamook	Manzanita	97130	2	1	1*	1	1	1	1*
Tillamook	Nehalem	97131	2	1	1*	1	1	1	1
Tillamook	Neskowin	97149	2	1	1*	1	1	1	1*
Tillamook	Netarts	97143	2	1	1*	1	1	1	1*
Tillamook	Oceanside	97134	2	1	1*	1	1	1	1*
Tillamook	Pacific City	97135	2	1	1*	1	1	1	1*
Tillamook	Rockaway	97136	2	1	1*	1	1	1	1*
Tillamook	Tillamook	97141	2	1	2	1	1	1	2
Tillamook	Wheeler	97147	2	1	1*	1	1	1	1*
Umatilla	Adams	97810	1	1	1*	1	1	1	1*
Umatilla	Athena	97813	2	1	1*	1	1	1	1*
Umatilla	Cayuse	97821	1	1	1*	1	1	1	1*
Umatilla	Echo	97826	1	1	1*	1	1	1	1*
Umatilla	Helix	97835	1	1	1*	1	1	1	1*
Umatilla	Hermiston	97838	1	1	1	1	1	1	1
Umatilla	Meacham	97859	1	1	1*	1	1	1	1*
Umatilla	Milton Freewater	97862	1	2	1	1	1	1	1
Umatilla	Pendleton	97801	1	1	1	2	1	1	1
Umatilla	Pilot Rock	97868	1	1	1*	1	1	1	1*
Umatilla	Rieth	97871	1	1	1*	1	1	1	1*
Umatilla	Stanfield	97875	1	1	1	1	1	1	1*
Umatilla	Ukiah	97880	1	1	1*	1	1	1	1*
Umatilla	Umatilla	97882	2	1	1	1	1	1	1*
Umatilla	Weston	97886	1	1	1*	1	1	1	1
Union	Cove	97824	1	1	1	1	1	1	1*
Union	Elgin	97827	1	1	1	1	1	1	1
Union	Imbler	97841	1	1	1*	1	1	1	1
Union	La Grande	97850	1	1	1	1	1	1	1
Union	North Powder	97867	1	1	1*	1	1	1	1*

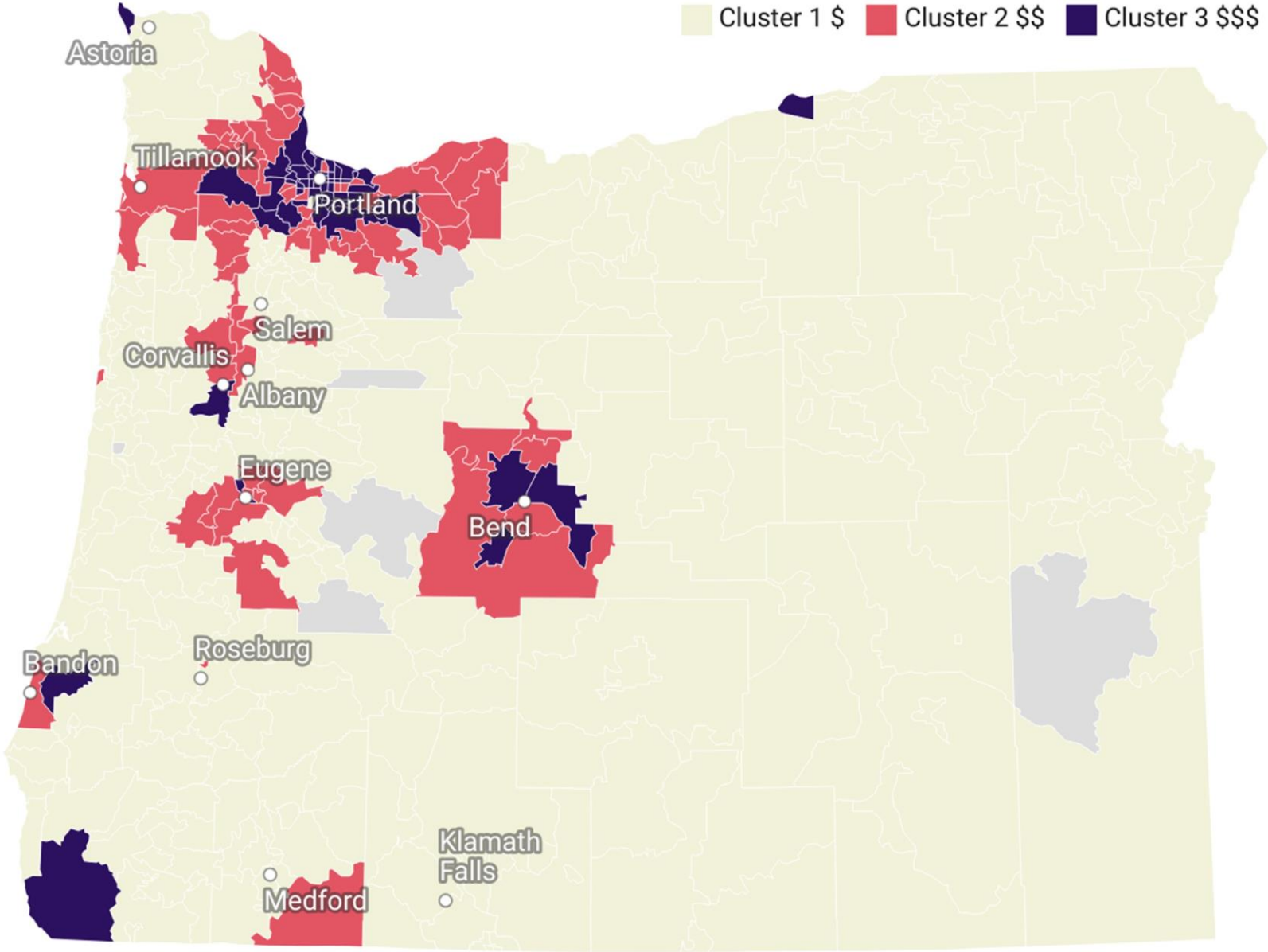
County	City	Zip	Small Home-Based Cluster			Center and Large Home Cluster	Center Cluster	Large Home Cluster	Center and Large Home Cluster
			2020	2022	2024	2020	2022	2022	2024
Union	Summerville	97876	1	1	1*	1	1	1	1*
Union	Union	97883	1	1	1	1	1	1	1*
Wallowa	Enterprise	97828	1	2	1	1	1	1	1*
Wallowa	Imnaha	97842	1	1	1*	1	1	1	1*
Wallowa	Joseph	97846	1	1	1*	1	1	1	2
Wallowa	Lostine	97857	1	1	1*	1	1	1	1*
Wallowa	Wallowa	97885	1	1	1*	1	1	1	1*
Wasco	Antelope	97001	2	1	1*	1	1	1	1*
Wasco	Dufur	97021	2	1	1*	1	1	1	1*
Wasco	Maupin	97037	2	1	1*	1	1	1	1*
Wasco	Mosier	97040	2	1	1*	1	1	1	1
Wasco	Shaniko	97057	2	1	1*	1	1	1	1*
Wasco	The Dalles	97058	2	2	1	1	1	1	2
Wasco	Tygh Valley	97063	2	1	1*	1	1	1	1*
Washington	Banks	97106	2	2	2*	2	1	1	1
Washington	Beaverton	97003	2	3	3	2	3	3	3
Washington	Beaverton	97005	3	3	3	3	4	3	4
Washington	Beaverton	97006	3	3	3	3	4	3	3
Washington	Beaverton	97007	2	3	2	3	3	3	4
Washington	Beaverton	97008	3	3	3	3	3	3	4
Washington	Beaverton	97078	2	3	2	3	3	3	3
Washington	Buxton	97109	2	2	2*	2	1	1	1*
Washington	Cornelius	97113	2	3	2	2	2	3	3
Washington	Forest Grove	97116	2	3	2	2	2	3	3
Washington	Gales Creek	97117	2	2	2*	2	1	1	1*
Washington	Gaston	97119	2	3	3*	2	1	1	1*
Washington	Hillsboro	97123	2	3	3	3	3	3	3
Washington	Hillsboro	97124	3	3	3	4	4	4	4
Washington	Manning	97125	2	2	2*	2	1	1	1*
Washington	North Plains	97133	2	2	2*	2	1	1	1*
Washington	Portland	97225	3	3	3	4	4	3	4
Washington	Portland	97229	3	3	3	4	4	3	4
Washington	Sherwood	97140	2	3	3	3	3	3	2
Washington	Tigard	97223	3	3	2	3	4	3	4
Washington	Tigard	97224	3	3	3	3	4	3	3
Washington	Timber	97144	2	2	2*	2	1	1	1*
Washington	Tualatin	97062	2	2	2	3	4	3	4
Wheeler	Fossil	97830	1	1	1*	1	1	1	1*

County	City	Zip	Small Home-Based Cluster			Center and Large Home Cluster	Center Cluster	Large Home Cluster	Center and Large Home Cluster
			2020	2022	2024	2020	2022	2022	2024
Wheeler	Mitchell	97750	2	1	1*	1	1	1	1
Wheeler	Spray	97874	2	1	1*	1	1	1	1*
Yamhill	Amity	97101	3	2	2*	1	1	1	1
Yamhill	Carlton	97111	2	2	2*	2	2	2	2*
Yamhill	Dayton	97114	3	2	1	2	2	2	1
Yamhill	Dundee	97115	3	2	2*	2	2	2	3
Yamhill	Lafayette	97127	2	2	2*	2	2	2	2
Yamhill	McMinnville	97128	2	2	2	2	2	1	2
Yamhill	Newberg	97132	3	2	3	3	3	3	3
Yamhill	Sheridan	97378	2	1	1	2	2	1	1
Yamhill	Willamina	97396	2	1	1*	1	1	1	1*
Yamhill	Yamhill	97148	2	2	2*	2	2	2	2*

*Historical cluster value was used due to no providers or prices available in the zip code in the 2024 Market Price Study data.

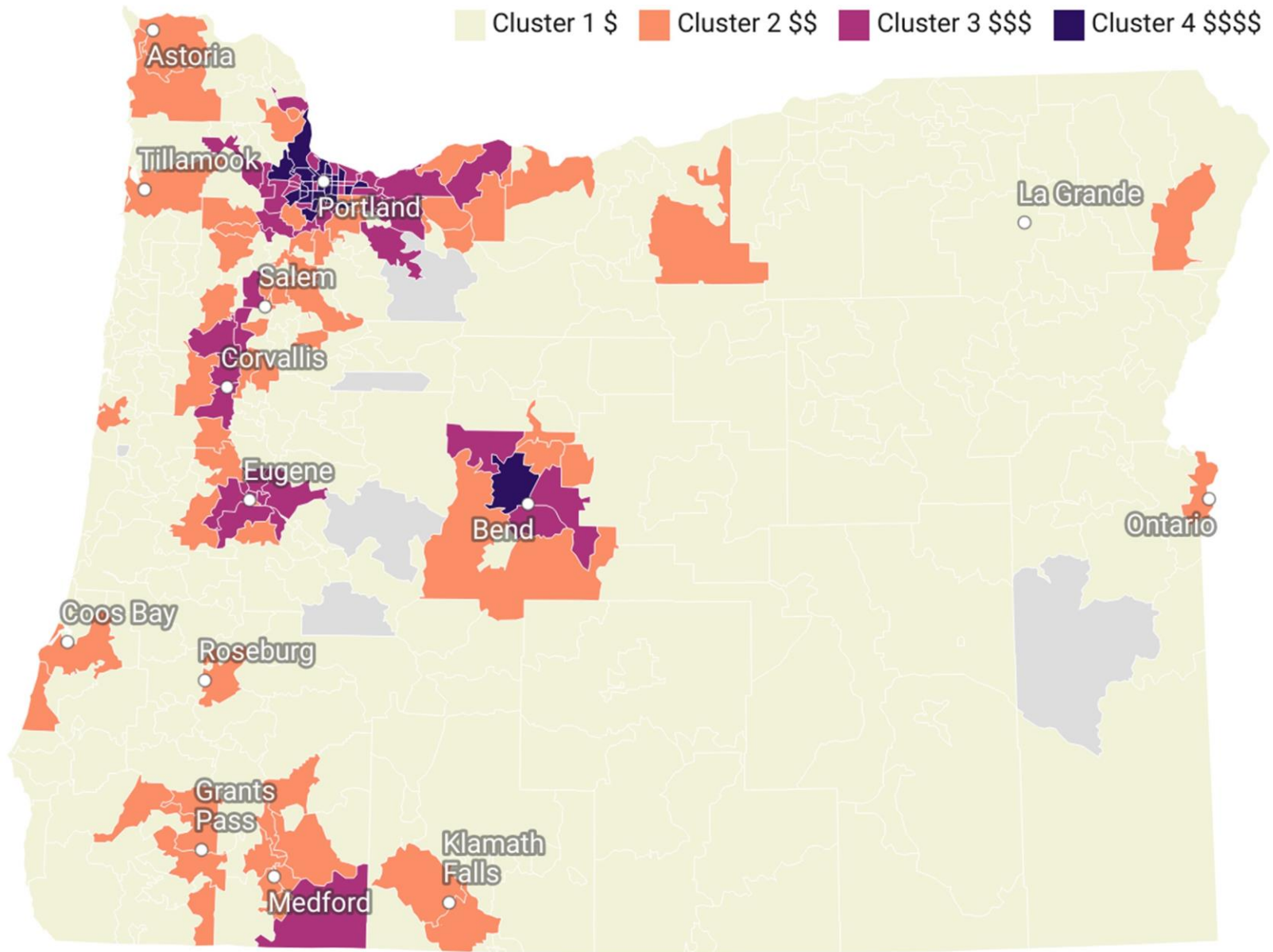
APPENDIX G

Map 1: 2024 Geographic Clusters of Child Care Prices for Small Home-Based Care



Map Description: Price variation by geography for small home-based care in 2024. The highest prices are Cluster 3 (purple) and lowest prices are Cluster 1 (beige). Data current as of December 2024. Gray areas on the map are those without a zip code.

Map 2: 2024 Geographic Clusters of Child Care Prices for Center and Large Home-Based Care



Map Description: Price variation by geography for center and large home-based care in 2024. The highest prices are Cluster 4 (purple) and lowest prices are Cluster 1 (beige). Data current as of December 2024. *Gray areas on the map are those without a zip code.*