

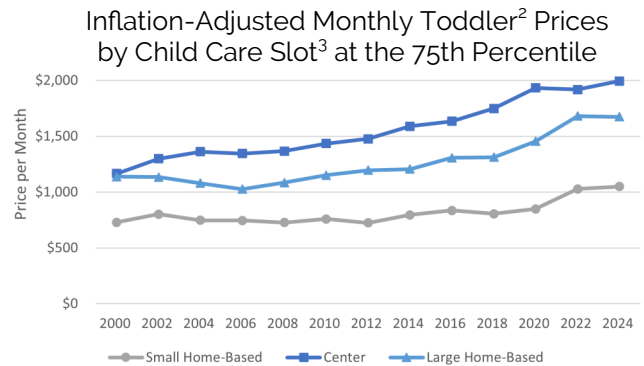
# 2024 Oregon Market Price Study—Key Findings

Produced by the Oregon Child Care Research Partnership

## Prices have consistently increased over time.

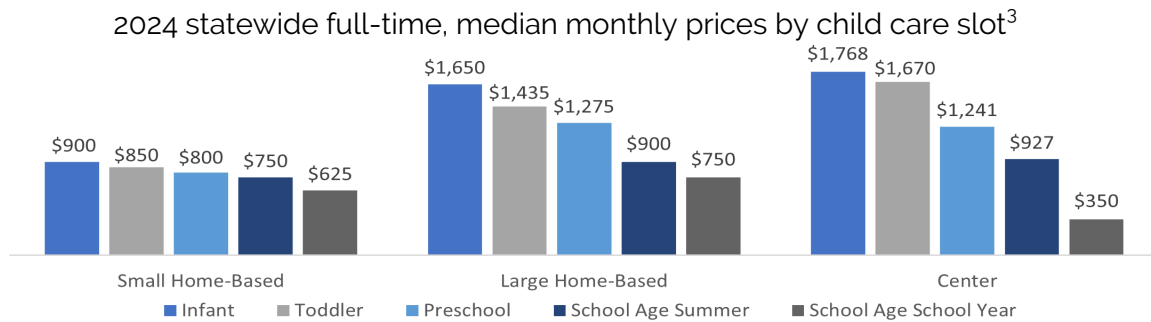
Since 2000, prices<sup>1</sup> have increased for all types of care and age groups.

From 2022 to 2024, prices increased by less than 5% for most care types and ages served after adjusting for inflation. Large home-based preschool prices increased by 7%.



## Prices vary by type of care and age of child served.

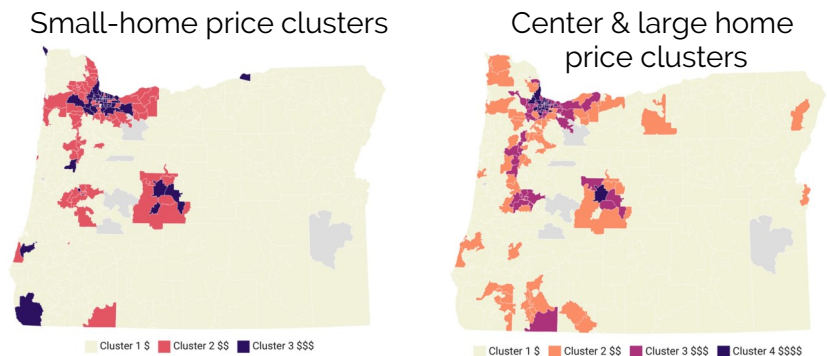
Centers report the highest prices, followed by large home-based, and small home-based care. Within each type of care, infant prices are the highest, followed by toddler, preschool, and school age prices.



## Prices vary across the state and group into distinct child care markets.

Prices grouped into three distinct markets for small home-based care and four markets for center and large home-based care.

Child care prices are generally highest in urban areas of the state and lower in rural areas.



Data come from the 2024 Oregon Market Price Study. This study examines the prices set by child care facilities across Oregon including potential submarkets by type of care, ages of children served and geography. Results are used to inform local and state policymaking efforts. Prices are as of December 2024.

<sup>1</sup>The Consumer Price Index for All Urban Consumers was used to adjust all child care prices into 2024 dollars.

<sup>2</sup>Toddler prices serve as a mid-point for prices because they tend to be lower than prices for infants and higher than prices for preschool-age care.

<sup>3</sup>Slot prices were calculated by weighting prices by total capacity (small home) or age group capacity (centers and large home) to best represent what is available to families in the community.

Full report can be found at:

[health.oregonstate.edu/early-learners/research/oregon-child-care-market-price-study-2024](https://health.oregonstate.edu/early-learners/research/oregon-child-care-market-price-study-2024)

To learn more about Oregon child care: [health.oregonstate.edu/early-learners](https://health.oregonstate.edu/early-learners)

Contact us at [oregonccrp@oregonstate.edu](mailto:oregonccrp@oregonstate.edu) | 541-737-5373

