



Early Learning System Initiative

WHAT IS ELSI?

The Early Learning System Initiative (ELSI) is a state-wide center developed in 2021 through an agreement between Oregon State University (OSU) and the Oregon Department of Early Learning and Care (DELIC) to increase early access to high-quality, professional learning opportunities and technical assistance for the early learning and care professionals in Oregon.

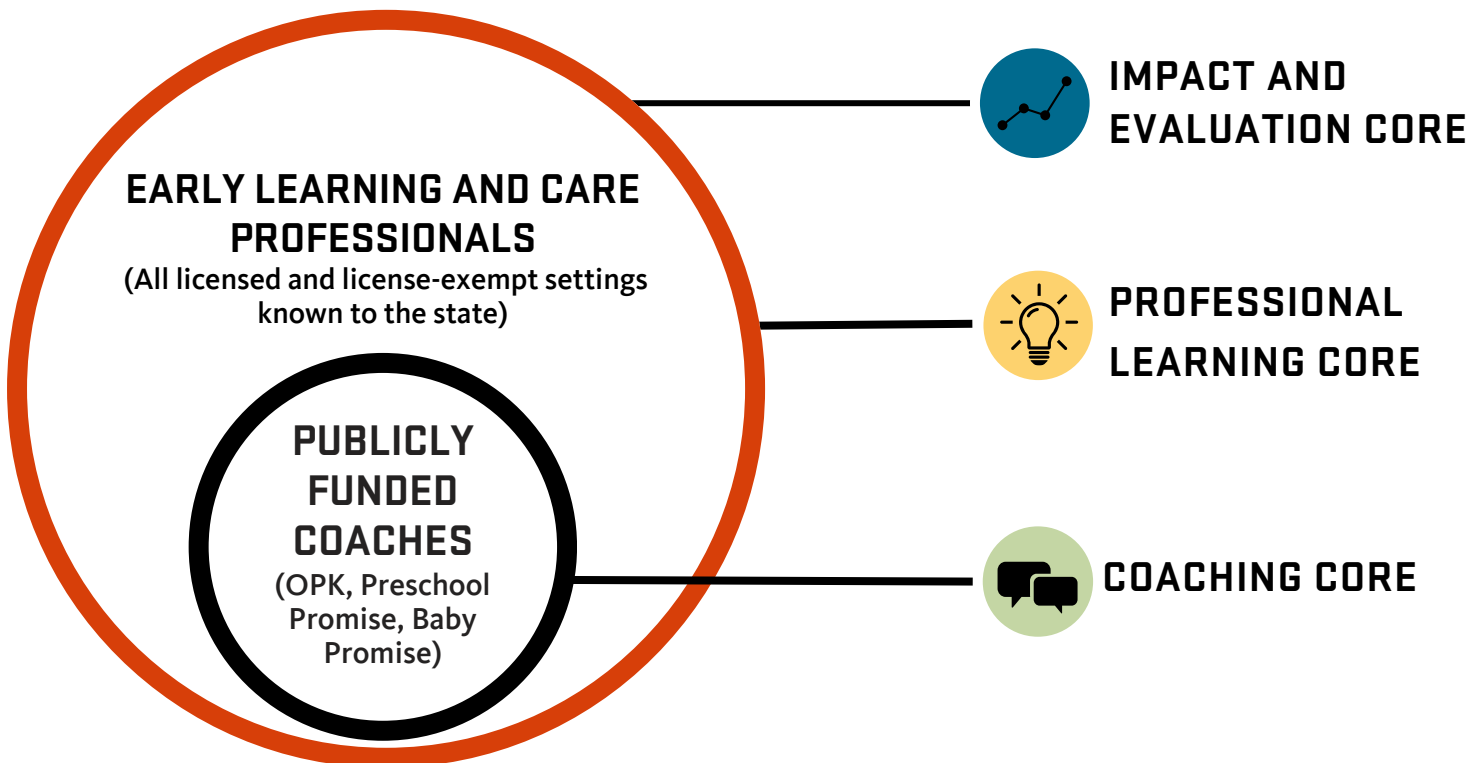
ELSI has three core areas of work: Coaching, Professional Learning, and Impact and Evaluation.

ELSI'S PURPOSE:

ELSI works alongside partners to support, strengthen, and expand upon existing professional learning opportunities to meet the diverse needs and assets of Oregon's early learning and care professionals.

The center aims to respectfully, effectively, and equitably support early childhood professionals who care for and educate children from historically marginalized populations. ELSI uses a cultural and linguistically responsive approach and is committed to centering anti-racism, equity, and inclusion in all aspects of our work.

WHO DOES ELSI SUPPORT?



ELSI is also housed within the Hallie E. Ford Center for Healthy Children and Families at OSU and aligns its vision and values with the Inclusion Initiative, which is funded by the Oregon Department of Education (ODE).



Early Learning System Initiative

WHAT DOES ELSI DO?



PROFESSIONAL LEARNING CORE

WHAT WE DO:

- Professional Learning Development and Facilitation
- SEQUAL/Workplace Well-being
- Support for PSP Quality Specialists, TA, and Infant-Toddler Specialists
- Early STEAM Oregon and STEAM Camp Events
- ELSI Newsletter and Social Media

**CLICK or SCAN TO
READ ONE-PAGER**

<https://beav.es/cDe>



COACHING CORE

WHAT WE DO:

- 1:1 Mentor Coaching
- Oregon Coaching Competencies
- Mentor Coach Framework
- Monthly CoP for PSP and OPK Coaches

**CLICK or SCAN TO
READ ONE-PAGER:**

<https://beav.es/cDB>



IMPACT AND EVALUATION CORE

WHAT WE DO:

- Provide Data-driven Insights
- Evaluate ELSI's Activities and Goals
- Support Continuous Improvement of ELSI's Activities and Goals

**CLICK or SCAN TO
READ ONE-PAGER:**

<https://beav.es/cD2>



ELSI is also housed within the Hallie E. Ford Center for Healthy Children and Families at OSU and aligns its vision and values with the Inclusion Initiative, which is funded by the Oregon Department of Education (ODE).

WANT TO LEARN MORE ABOUT ELSI? PLEASE CONTACT:

Tammy Winfield, MS
ELSI Program Coordinator
tammy.winfield@oregonstate.edu

Megan McClelland, PhD
Hallie E. Ford Center and ELSI Director
megan.mcclelland@oregonstate.edu

STAY CONNECTED WITH ELSI NEWS AND EVENTS:

Find us on [Facebook](#) and [Instagram](#)
[@earlylearningsysteminitiative](#)

Scan the QR Code to
visit our website:
health.oregonstate.edu/elsi

